

Conceptual Design Characteristics

- Length over all 64 meters
- Beam 15.8/16.8 meters
- Draft 4.6 meters
- Installed power 3,730 kW
- Classification ABS, ACCU, A1 Ice
- Maximum speed 14 knots
- Ice capability 0.8-0.9m @ 2 knots

ARRV Operability

- South of Bering Strait
typical conditions:
less than 1.0 m first-year ice, ridging, rubble
late December to late May (\pm month)
possible independent operations:
year round
- Chukchi Sea - South
typical conditions:
about 1.5 m first-year ice, dynamic
October to mid May
possible independent operations:
limited May to December

ARRV Operability

- Chukchi Sea - North
 - typical conditions:
 - 1.8m first-year + significant multi-year ice, dynamic
 - late September to early September
 - possible independent operations:
 - limited
- North of Alaska / Beaufort Sea
 - typical conditions:
 - significant multi-year ice
 - possible independent operations:
 - ~3-8 weeks, severely limited

ARRV Operability

- **South of Bering Strait**

typical conditions:

less than 1.0m first-year ice +
ridging, rubble

late Dec - late May (\pm month)

possible independent operations:
year round

- **Chukchi Sea - South**

typical conditions:

about 1.5m first-year ice, dynamic
Oct - mid May

possible independent operations:
limited May - Dec

- **Chukchi Sea - North**

typical conditions:

1.8m first-year + multi-year ice
late Sept - early Sept

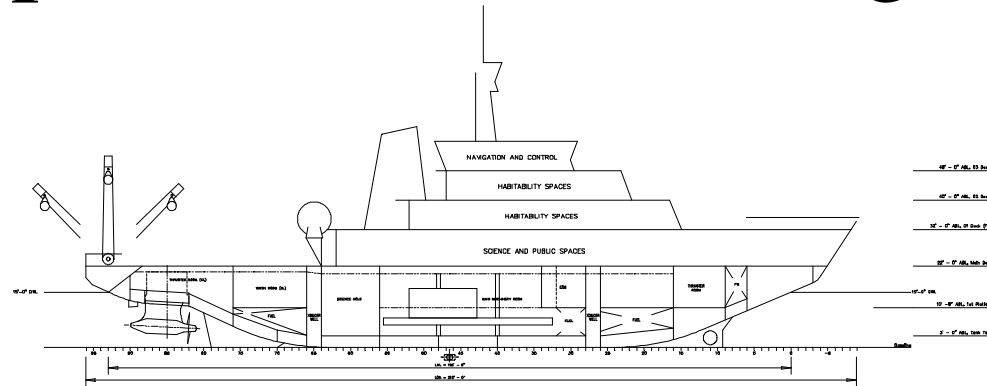
possible independent operations:
limited

- **North of Alaska /
Beaufort Sea**

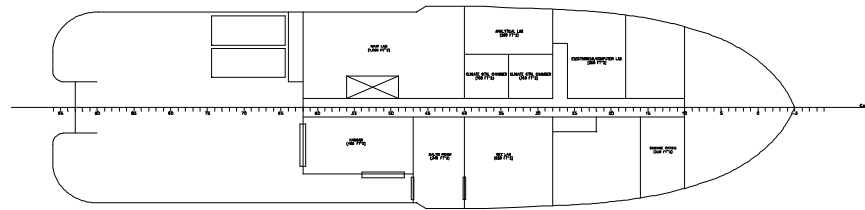
typical conditions:

significant multi-year ice
possible independent operations:
~3-8 weeks, severely limited

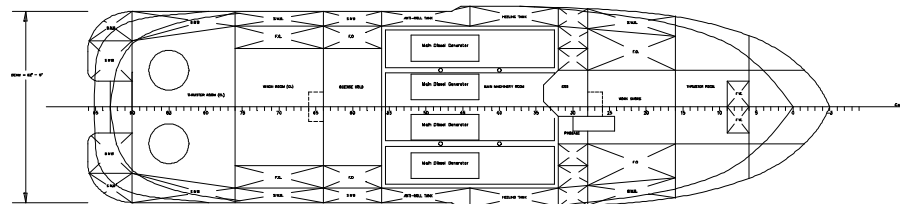
Conceptual General Arrangement



Profile



Main Deck



Hold Plan

Concept Hull Wireframe Model

