

AICC:

Lisa Clough, Chair

Jim Swift

Larry Lawver

Terry Whitledge

Margo Edwards

Bob Bourke

Peter Minnett

Hedy Edmonds

Dale Chayes &

Dan Schwartz

& UNOLS OFFICE!



Meetings

- Meet 2x per year
- Fall Meeting- General review of science concerns, big picture planning
- Winter Meeting- in Seattle- specifics of post-cruise assessments, details of getting ready for upcoming cruises
- Additional meetings- interaction with ARVOC, small working groups

2002 Science

- 4 different missions:
- SBI (Shelf-Basin Interactions)
<http://www.joss.ucar.edu/sbi/catalog/catalogs.html>
- Marine Climate and Relative Sea Level
Across Central Beringia
- SBI Moorings
www.whoi.edu/science/PO/arcticedge/arctic_west02/expedition/index.html
- Chukchi Borderlands

**Many thanks to:
Funding Agencies &
Scientists for working
TOGETHER to solve
challenges**

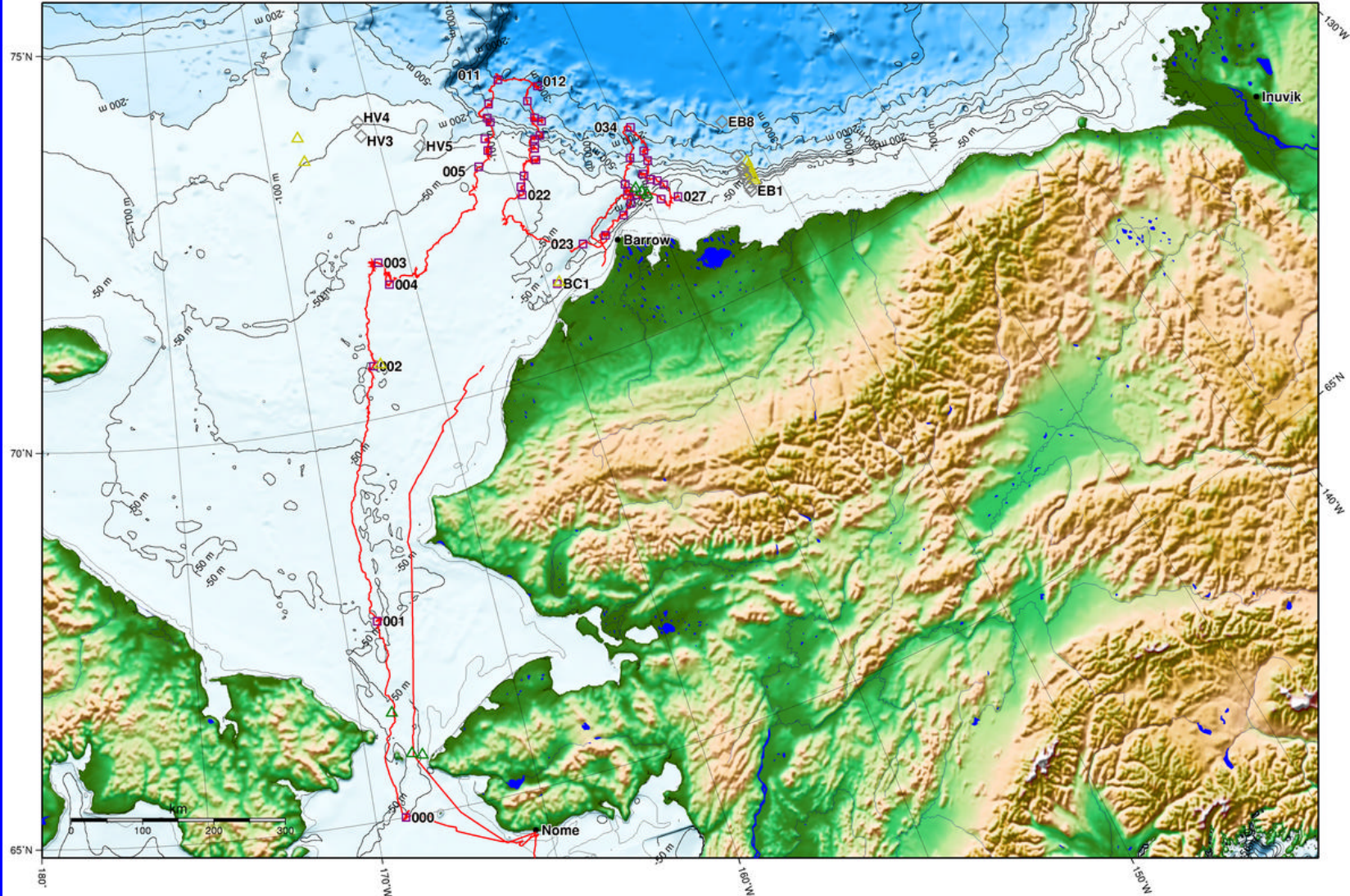




USCGC Healy Track

HLY-02-01 Cruise (May 8 - June 12, 2002)

- Ship Track
- △ Moorings
- △ Future Moorings
- Stations
- ◇ Future Stations

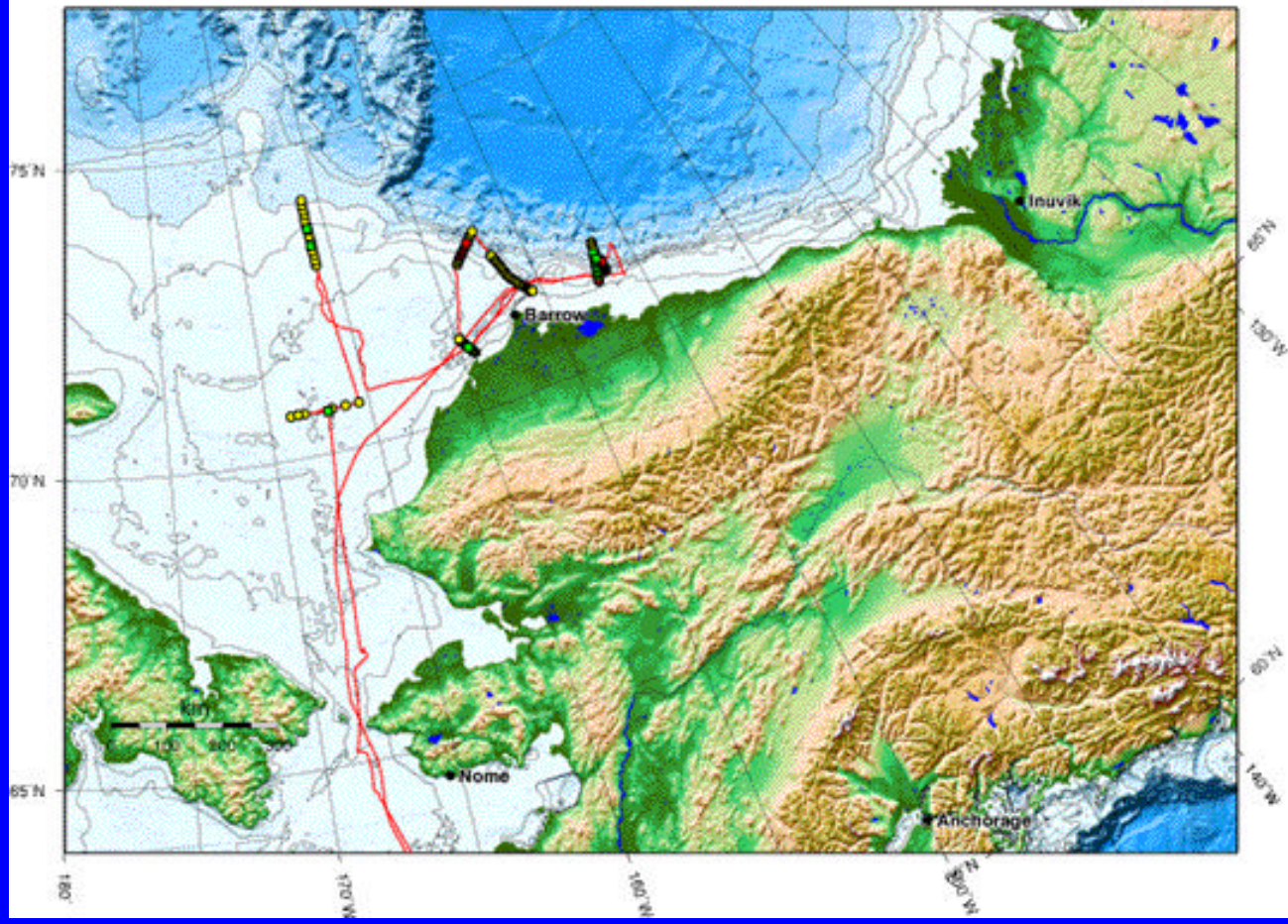




USCGC Polar Star Location and Track

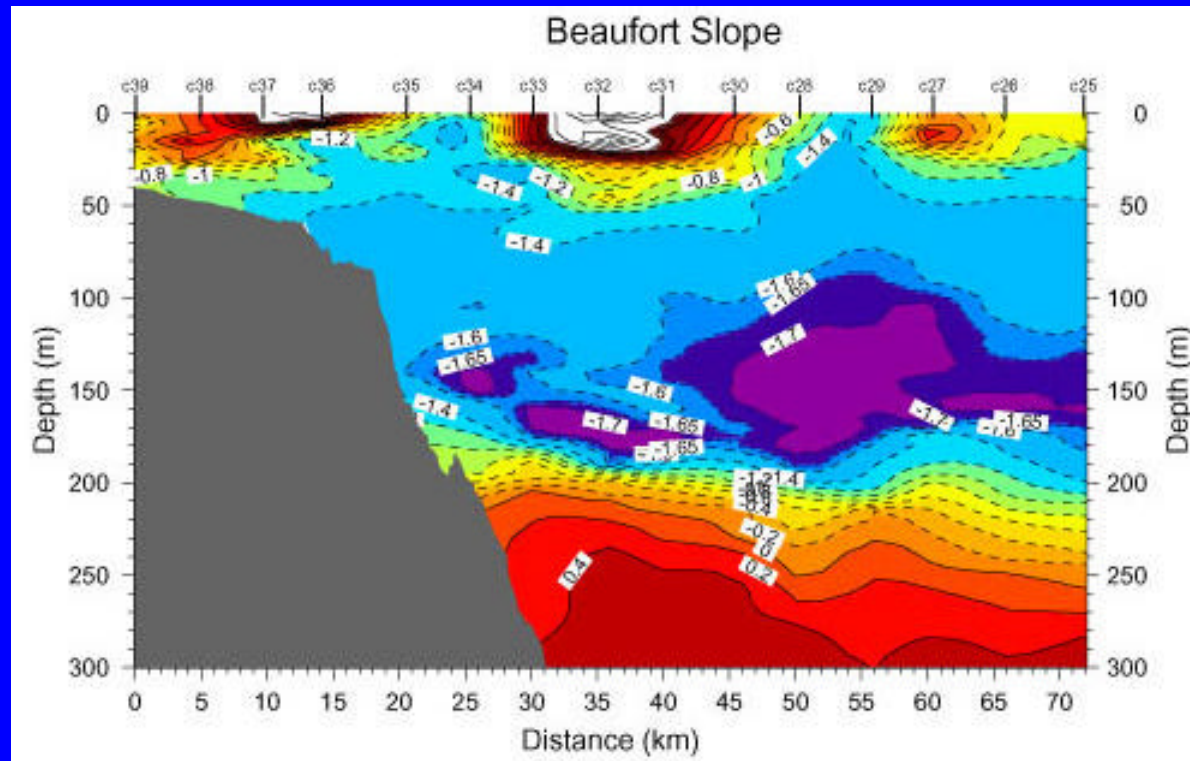
Date: 2002/8/10 23:32:12 UTC

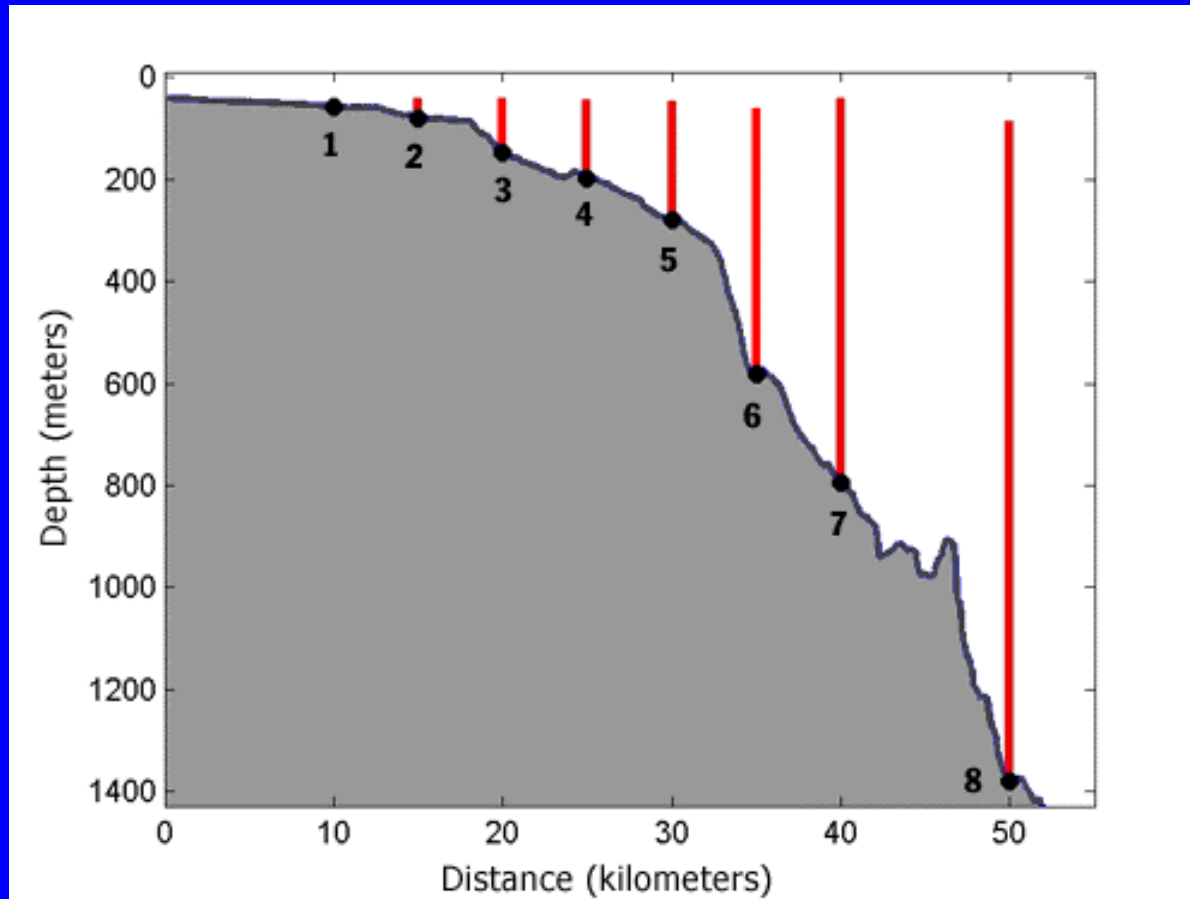
- Current Location
- CTD Station
- XCTD Station
- Mooring









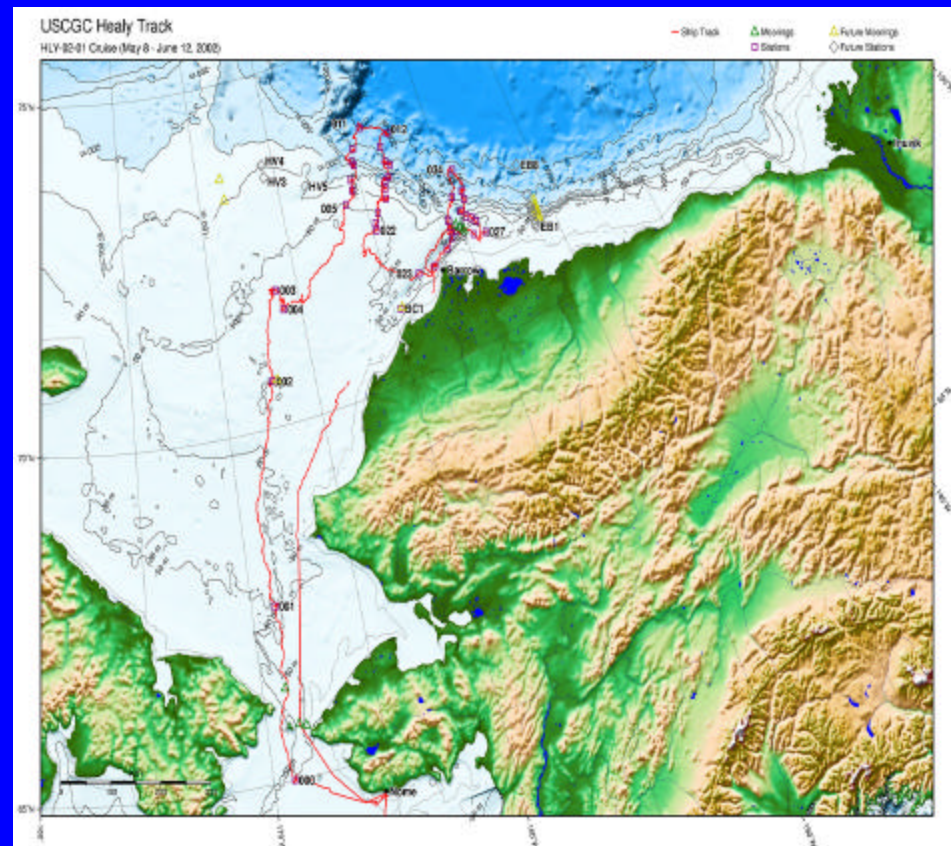


AICC Updates

- Series of formal debriefs (20 topics- chief scientist, AICC, NSF, USCG- Ice Operations and Ship's Officers)-
- Prioritize, discuss, action items
- AICC action items
- Recommendations to USCG and Agencies

Key Points from Fall meeting

- Address Native Community Concerns regarding ship ops in areas of subsistence
- Continue post-cruise debriefs
- Work towards expeditionary planning
- Recommend collection of underway data
- Begin planning for POLAR class upgrades



2003 Plans

- AICC:Townhall meeting at AGU (Dec 6th)
 - Next meeting Feb. '03 in Seattle

 - POLAR STAR- Dry Dock
 - POLAR SEA- Deep Freeze 2003
 - HEALY-
 - 6 weeks SBI service cruise
 - 4 weeks SBI moorings cruise
- Survey work? Ocean exploration work?

