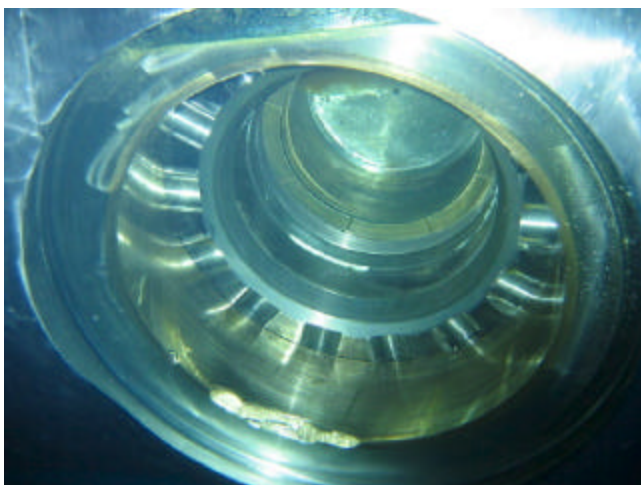
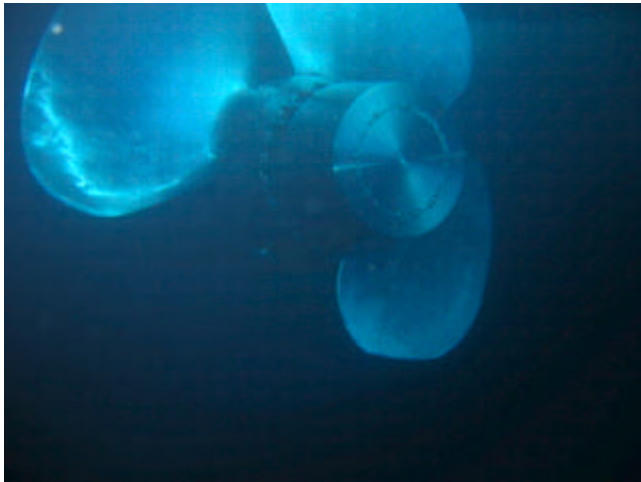


SSEC/UW - Madison AWS Network  
SFC T[F] at 17 UTC on 03 Mar 2003

# HEALY Schedule

- Lots of repairs (Hobart ---> Seattle)
- Arrive Seattle 1-8 April
- SeaBeam repairs, Cycloconverter repairs, SDN upgrade and groom...
- Scheduled to depart 13 June
- 3 Arctic missions summer 2003
- 1. Nares Strait
- 2. Chukchi Cap mapping
- 3. SBI moorings
- + Canadian icebreaker for SBI survey cruise

# Polar Sea Propeller Casualties



- #1 Blade on Starboard Prop Broke Off While Breaking Heavy Ice
- Probable Cause is Thread Failure on the Blade Trunnion
- Final Determination Requires Hub Removal

# Perfect Storm Conditions

- Little or No Remaining Service Life
  - MAJOR Casualties Now the Norm On Both Ships, Every Mission
- Doubling of the OpTempo
  - Both Ships Now On Tap to Do the Hardest Mission Year In and Year Out
- Unfriendly Fiscal Environment Within the Coast Guard
  - Effectively Cancelled RIP, No SLEP Money ID'd

# SLEP

## Analysis of Alternatives

- Sticker Shock!
  - \$400M for Both Ships
  - Need to Lock in Money Very Soon (FY 07)
  - Competes Against Sea Change in CG
    - DHS Move
    - Deepwater (\$20B)/Rescue 21(\$800M)
- Mitigating Factors
  - Reduce Power (75K SHP down to 45K SHP)
  - SLEP Only One Ship
  - HEALY Into DF Mix on a Regular Basis



# March 21st meeting

- 1. Status (ice, machinery, refit/ replacement)
- 2. What can science do to help?
- 3. What science can be included?
- 4. How to maximize use of USCG icebreakers for the next few years
  - A. Arctic science
  - B. Antarctic logistics
- Then science workshop sometime between May and November

## Other items

- NOAA push for international collaboration
- A. Barrow as a port of entry to the US?
- B. AICC role in international collaboration?