

**Replacement of the R/V Maurice Ewing
By a Commercial 3D Seismic Vessel
12 July 2004**

With from notification by the NSF that our proposal "Replacement of the R/V Maurice Ewing by a Commercial 3D Seismic Vessel" was approved and funded, Lamont Doherty Earth Observatory notified WesternGeco and set the "effective date" June 14, 2004 for beginning the acquisition of the Western Legend. In accordance with our Memorandum of Agreement with WesternGeco a wire transfer for 10% of the purchase price was sent as a deposit.

As part of the acceptance process in the MOA there are four additional items to be scheduled and acted on. These include:

- 1- the transit of the vessel from Lyngdahl, Norway to a dry-dock for inspection.
- 2- Dry-docking the vessel for inspection and required maintenance.
- 3- Class reactivation.
- 4- Transiting the vessel from Norway to the port of delivery in the USA.

There have been some changes to our original timeline due to the availability of dry-docks, scheduling in a crew, and lead time for parts. A revised timeline is enclosed and an amendment to the MOA reflecting the change to the timeline was completed. The first step was ordering parts and overhaul of the main engines and reduction gears. These items are necessary for acceptance of the vessel since the MOA requires the reactivation of class by Det Norske Veritas (DNV) as a step in the acceptance process. (Note: Once successfully reactivated through DNV the Western Legend will be transferred to American Bureau of Shipping.) The main engine overhaul began last week. Operating the ship on the way to the shipyard represents an important opportunity in the acceptance process with direct underway observation of the ship's propulsion system.

WesternGeco advised that Captain and Chief Engineer have reported to the Western Legend. They are starting up systems, updating documentation such as the ISM system, and preparing for the International Ship Security Certificate. The full crew is scheduled to start coming aboard on or about 20 July.

Inspection of the vessel in dry-dock is planned for early August. Four yards are interested in the dry-docking. One is in Stavanger, one in Bergen, one north of Bergen and the yard furthest north is in Ulsteinvik. The last yard, although the most distance from Lyngdahl, is interesting because it is where the ship was built and will be close to records and the people doing the work on the gears.

As part of the Cooperative Agreement the NSF has required the establishment of two committees. The first is the EWING Replacement Oversight Conversion Committee (EROCC) and the second is a Science Oversight Committee.

EROCC has been established and an initial meeting was held on 22, 23 April at the NSF. A copy of the committee's charge is attached. The committee members include:

Tom Shipley, UTIG, Chairman
Jeff Babcock, SIO
Larry Mayer, UNH
Peter Littlewood, Shell Exploration
Tom Althouse, SIO
Fred Jones, OSU
Al Suchy, WHOI
Jim Cochran, LDEO, Ex-officio
Paul Ljunggren, Ex-officio

EROCC will be represented when the Western Legend is dry-docked for inspection by Tom Shipley and Tom Althouse. Dolly Dieter will be representing the NSF at the acceptance when the Western Legend.

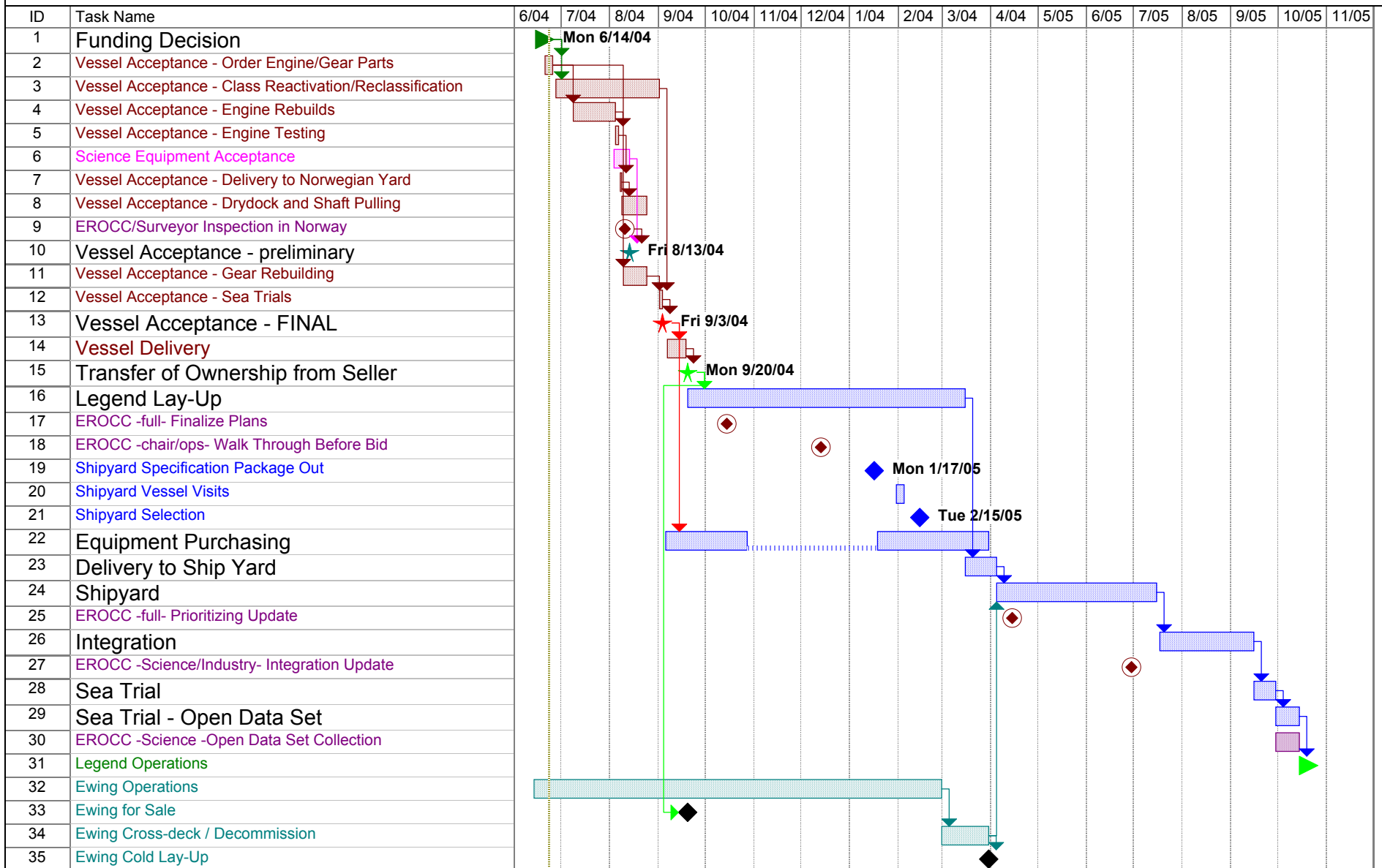
The second is the establishment of a Science Oversight Committee. This Science Oversight Committee will be established and managed by UNOLS to advise LDEO on long-term operational policy. Prior to any science cruises LDEO will request to have this vessel considered a National Oceanographic Facility under UNOLS due to the ship's unique seismic capabilities.

The Replacement Vessel Website can be found at <http://www.ldeo.columbia.edu/res/fac/oma/>. This site is intended to provide an overview of the project along with will regular updates and will include:

- Project Overview
- EWING Refit Workshop Report
- Photos of the Western Legend
- 3D images of the planned conversion.
- Ship arrangement
- Timeline for conversion
- Science mission requirements
- Identify the EWING Replacement Oversight Conversion Committee
- Provide opportunity for community input

A portion of the site will be password protected for EROCC only.

Western Legend Timeline



Project: legend_time5 Date: Wed 6/23/04	Task		Rolled Up Task		External Tasks	
	Progress		Rolled Up Milestone		Project Summary	
	Milestone		Rolled Up Progress		Group By Summary	
	Summary		Split			

Charge to the EWING Replacement Oversight Conversion Committee

The Committee is established to provide oversight on all aspects of the conversion of the Western Legend for use as a research vessel within the UNOLS fleet. This includes consideration of the ship modifications, selection and placement of the seismic and other oceanographic equipment and establishment of design and budget priorities to ensure the project remains within the agreed scope and cost.. The Committee responds to specific questions posed by NSF and LDEO Management and provides reports to NSF following each meeting. The Committee communicates regularly with LDEO management providing advice and guidance on all aspects of the conversion project. LDEO management ensures that the Committee is well informed in a timely way of all conversion related issues and decisions. A dedicated web page will be established by LDEO to facilitate this communication.

The Committee will consist of 7 -10 members, including a Chair. Employees of LDEO, or subcontractors involved in this project, may not be members of this Committee but may participate in an ex-officio capacity. The Committee is established and supported by LDEO, and its membership and scope of activities are approved by NSF.

It is anticipated that the EWING Replacement Oversight Conversion Committee will have carried out their charge with the completion of science sea trials. Thus, shortly thereafter, the Committee will be dissolved.