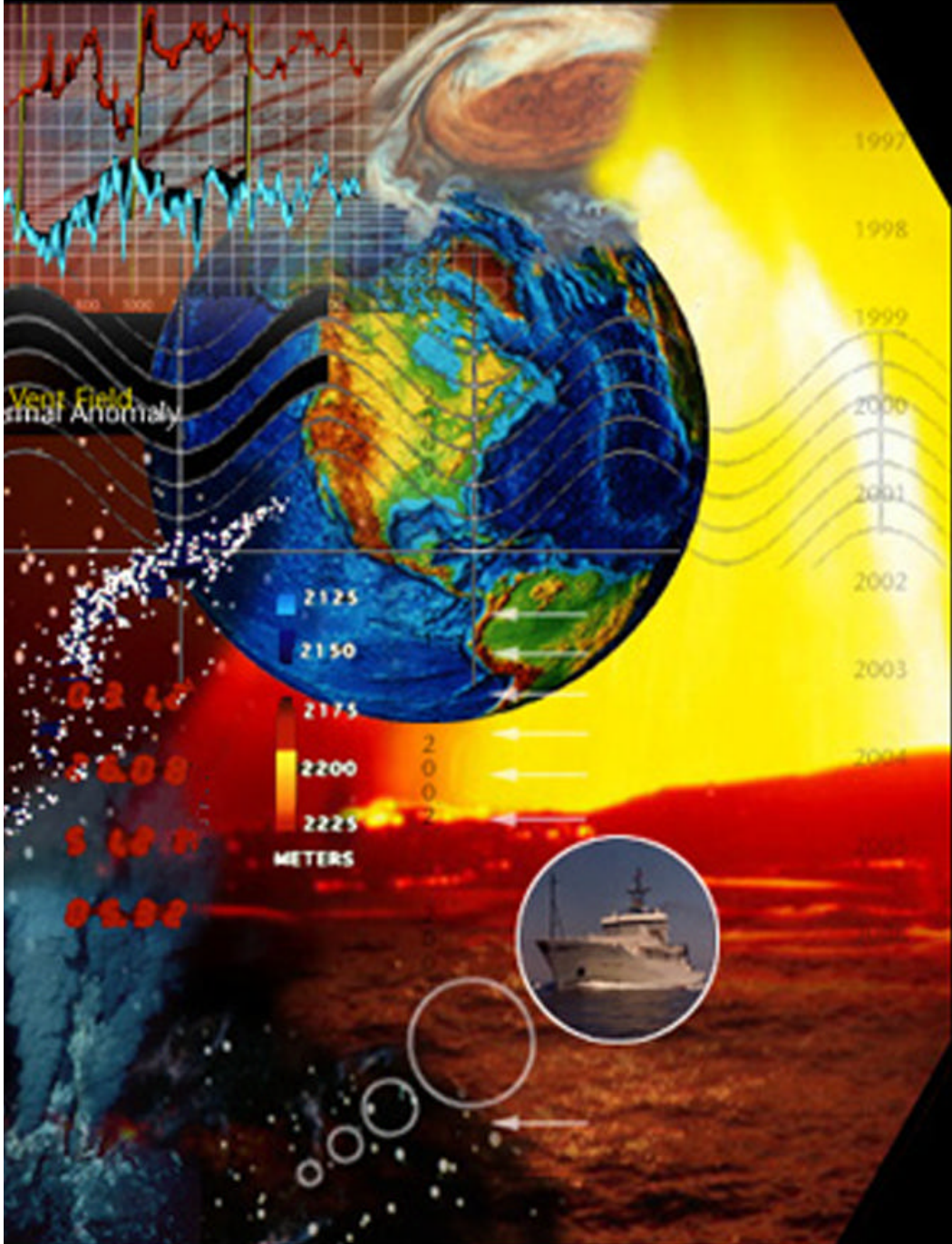


.....REVEL 1996..... REVEL 1997.....REVEL 1998.....REVEL 1999 REVEL 2000.....REVEL 2002.....REVEL 2003.....REVEL 2004.....REVEL 2005.....



REVEL Project

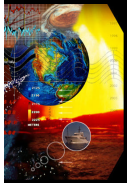
Research and **E**ducation:
Volcanoes, **E**xploration and **L**ife

Supported in part by the
National Science Foundation



Facilitated by the
University of Washington
School of Oceanography





REVEL 2004

Participants



- ◆ **Seven** new REVELers + **One** Sea-going Mentor

New-Jersey; New-York; Washington ; Washington, DC; West Virginia;
and Wyoming

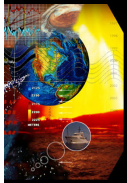
- ◆ Phys. Ed.; Math; Biol.; Mar. Sc., Life Sc.; Phys.Sc.; Chem. (K-12)

- ◆ **Thomas H. Nassif**, R.E. McDuff, V. Robigou and F. Stahr, 2004
Distribution of Particulates in Hydrothermal Plumes of the Endeavour
Axial Valley: Preliminary Results from the Sea Breeze Project

Eos Trans. AGU, Vol. 85, No. 47, Fall Meet. Suppl., Abstract B13A-0185



Monday, December 13 - 13h40, Moscone Center, Level 1 - B13A Posters
Ridge 2000 Research and Progress: Spreading Centers as Integrated Systems



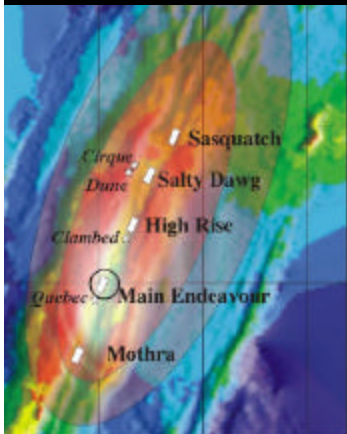
REVEL 2004

Partnership



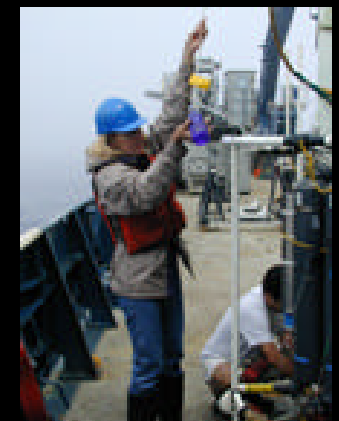
• SCIENCE

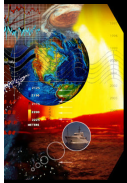
- ◆ Research cruise on **R/V Atlantis** - Dr. R.E. **McDuff** Chief Scientist and Sea Breeze project science party
- ◆ **ABE** operations and **CTD** studies of buoyant plumes
- ◆ R2K ISS, Juan de Fuca Ridge, Endeavour



• EDUCATION

- ◆ **UW** College of Education
- ◆ R2K **E&O**
- ◆ 8 School Districts throughout the US





REVEL 2005



- ◆ **Applications** available on web in **mid-January 2005**

<http://www.ocean.washington.edu/outreach/revel/>

- ◆ **R/V Thompson and ROV Jason 2**

September, 2005, dates TBA



- ◆ **Science partnership**

- ◆ Debbie Kelley “Sulfide inserts”
- ◆ John Delaney et al. “NEPTUNE-Keck Project

Juan de Fuca Plate

Endeavour and Nootka proto-observatories

