

Status of Archiving/Data

Maurice Tivey



DESSC
13-14 June 2005



Status of Archiving/Data

1. **Framegrabber - *Alvin* and *Jason***
Examples of real-time and archiving basis for digital data collected by NDSF vehicles
2. **Summary of income from NDSF vehicle imagery/ data and WHOI outreach**
(~ 1/2 FTE at WHOI deals with NDSF imagery issues)
3. **Legacy Data - Image Management System**
Includes *Alvin* and *Jason* images.



DESSC
13-14 June 2005



Status of Archiving/Data

Framegrabber - *Alvin* and *Jason*

Jason Virtual Van example... nominally 30 sec. snapshots with science data, event-logger and search capability for post-processing. *Alvin* - proof sheets, data plots.

The screenshot displays the Jason Virtual Control Van interface. At the top, three monitors show underwater footage: MONITOR 1: Sub9ea1, MONITOR 2: Sub9ea2, and MONITOR 3. Below the monitors is a data panel with the following information:

DAQ atlv720.Jason	Time: 2002/09/17 16:37:51	Htg: 206.460	Alt: 4.320	DegC: 2.014	Live Video
		Lat: 47 57.295089 N	Depth: 2189.686	Cond: 3.142	Dist. 300
		Lon: 129 5.770816 W	Bathy: 2174.008	Salin: 999.000	Sub. 300
Type: EVT NavSrc: JAG2 AltSrc:	X: 5108.980 Y: 6784.448 Z:		SWel: 999.000	MagX: 55800.0	Plot Maps
Event: TXT bottle filling	Pitch: -13.580 Roll: 1.745		MagY: 289600.0	MagZ: 318666.7	Daily / Hourly
			MagT: 507471.3		Local Area
					Search Results

Below the data panel is a control area with a search bar (containing 'Find'), a 'Show All' button, and a 'results only' checkbox. To the right are playback controls (FIRST, STOP, PLAY, DISPLAY, LAST) and a 'Goto' field set to 7290. A 'RefreshRate' field is set to 5. A 'CLOSE' button is also present.

A log window at the bottom left shows the following entries:

```
7290. 2002/09/17 16:37:51 EVT bottle filling
7291. 2002/09/17 16:38:09 EVT sample done
7292. 2002/09/17 16:38:56 EVT major 15 at 212 degrees
7293. 2002/09/17 16:44:52 EVT going to the base to look for a Lang sampling site
7294. 2002/09/17 16:55:59 EVT no location here for the lang sampler
```

At the bottom right, there is a 'Help' section with 'Control Panel' and 'Searching...'. The footer includes 'atlv720 - Juan De Fuca', 'CRUISE INFO | SELECT ANOTHER CRUISE', and 'Jason Virtual Control Van'.

Status of Archiving/Data

Framegrabber - *Alvin* and *Jason*

Archiving effort extends real-time data collection.

Security, access must be assured.

Data quality assurance also needed (e.g. navigation).

Derived data sets not included (imagenex).

http://www.whoi.edu/marops/vehicles/alvin/alvin_framegrabber.html

http://www.whoi.edu/marops/vehicles/jason/van_cruises.html

Experimental Ship-grabber

<http://4dgeo.whoi.edu/shipdata/index.html>

Data initiatives at WHOI plus links with other efforts.



DESSC
13-14 June 2005



Status of Archiving/Data

Summary of income from NDSF vehicle imagery/data and WHOI outreach

- 93 external requests for first half of 2005. Requestors include such diverse organizations as National Geographic Magazine, Houghton Mifflin and many other publishers of textbooks and curriculum materials, CD-ROMs or DVDs and related educational materials, science-related web sites, museum exhibits, and documentary films for the Discovery Channel and the BBC.
- We licensed \$19,587.95 for the use of still and video imagery, with an additional \$4,296.36 outstanding (not yet billed) for a total of \$23,884.31. These funds are returned to science. Many more images and video clips are provided to the WHOI community, the news media, the scientific community, funding agencies and others at no charge.
- We also respond to educators around the country sharing information with their classrooms, which is separate from the many web sites and other educational activities we support with images and information (e.g. Dive and Discover).

First half 2005 total income received is \$23,884.31



DESSC
13-14 June 2005



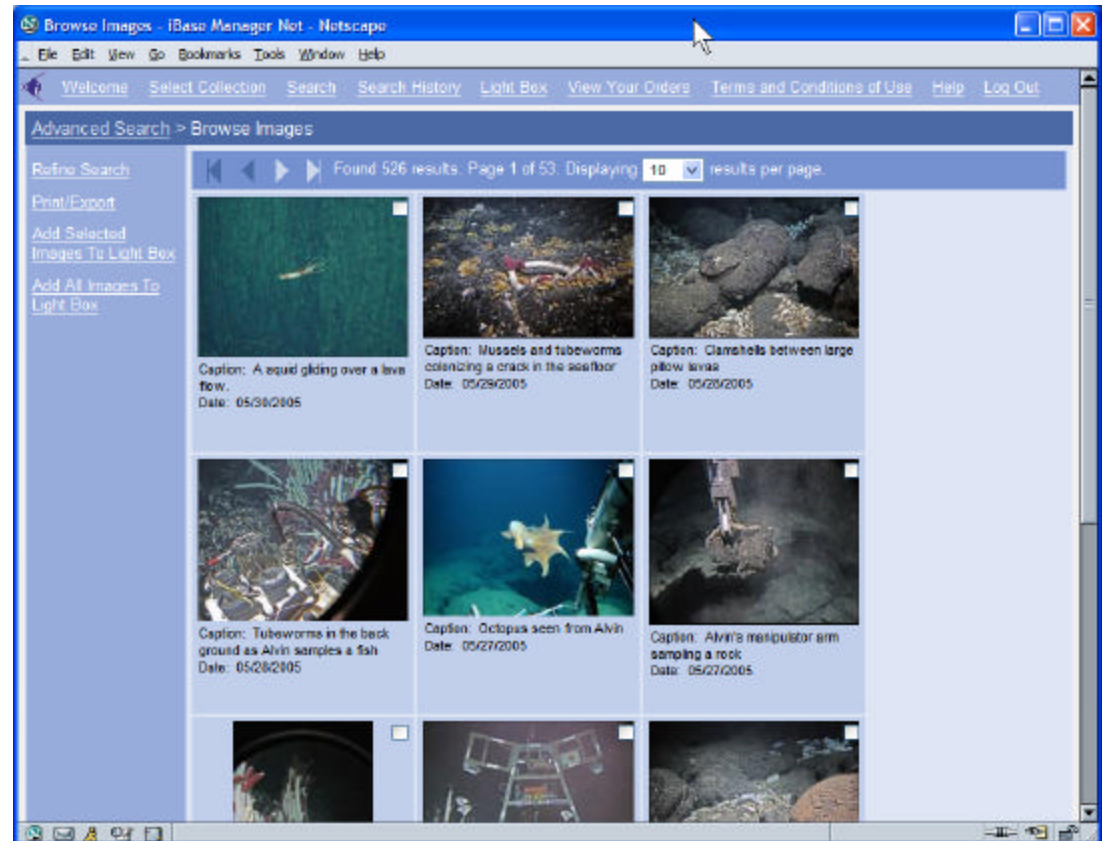
Status of Archiving/Data

Legacy Data - WHOI Image Management System (IMS)

Contains 736 *Alvin* and *Jason* images.

Images are mostly *Alvin* shots from 2002, but IMS database includes vehicles, people, and “classic” images.

<http://www.whoi.edu/ims/>



DESSC
13-14 June 2005

