

Status of Alaska Region Research Vessel (ARRV) Design

UNOLS Meeting
Washington, DC

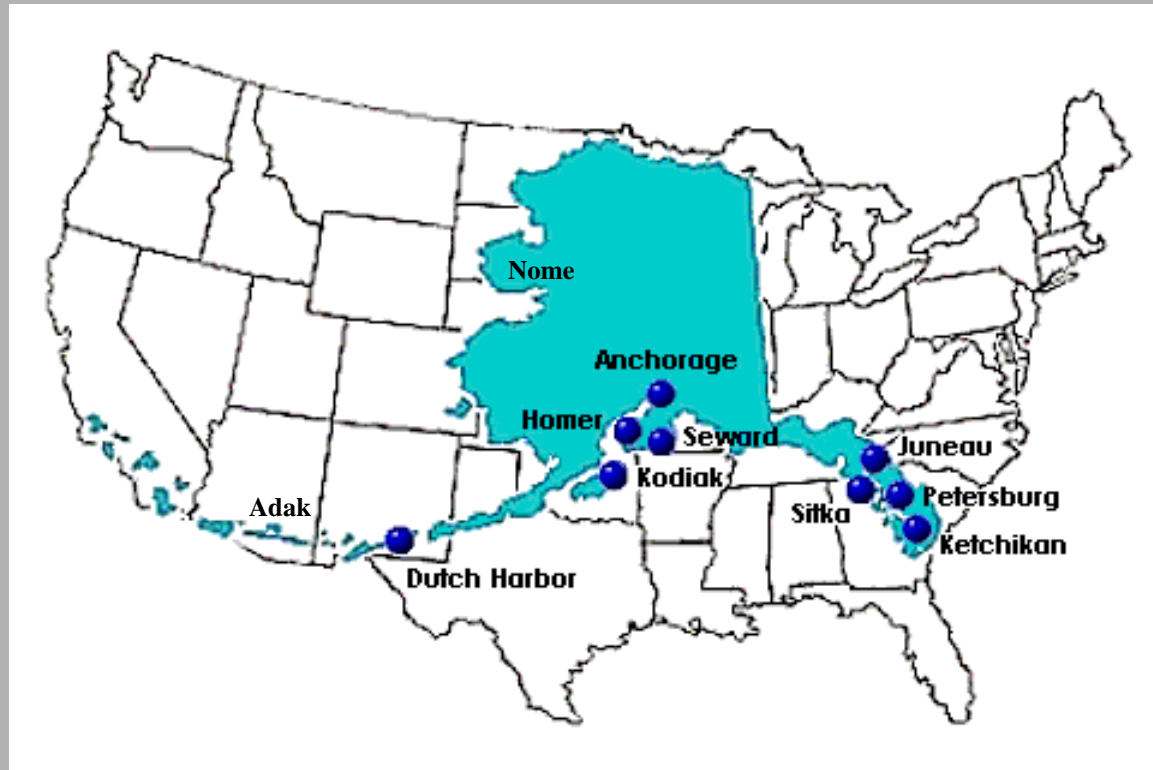
October 13, 2005

Alaska In Perspective

Huge Coastline

Long Distances

Nasty Weather



Alaska Region Research Vessel

Length: 236 feet

Beam: 48 feet

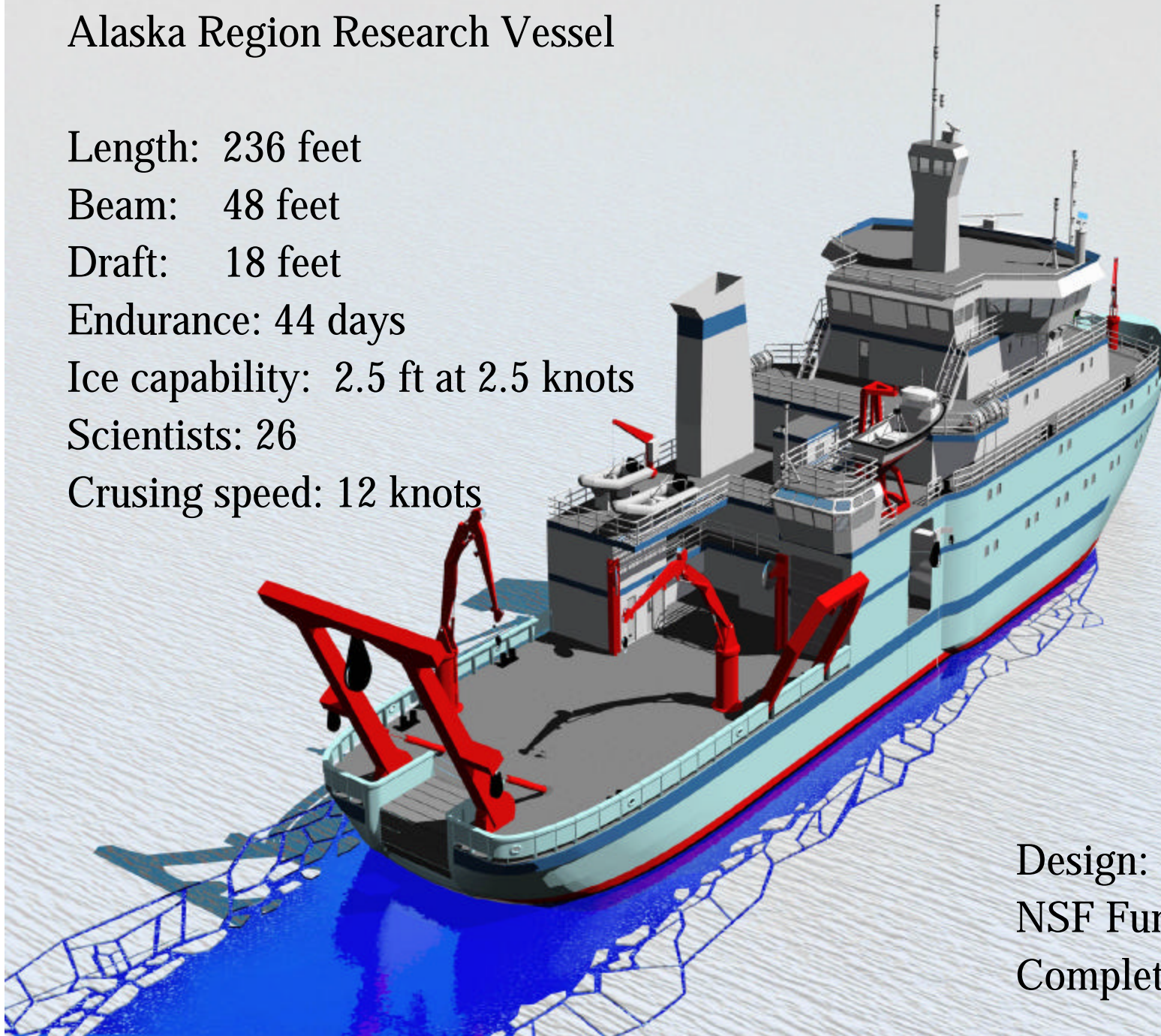
Draft: 18 feet

Endurance: 44 days

Ice capability: 2.5 ft at 2.5 knots

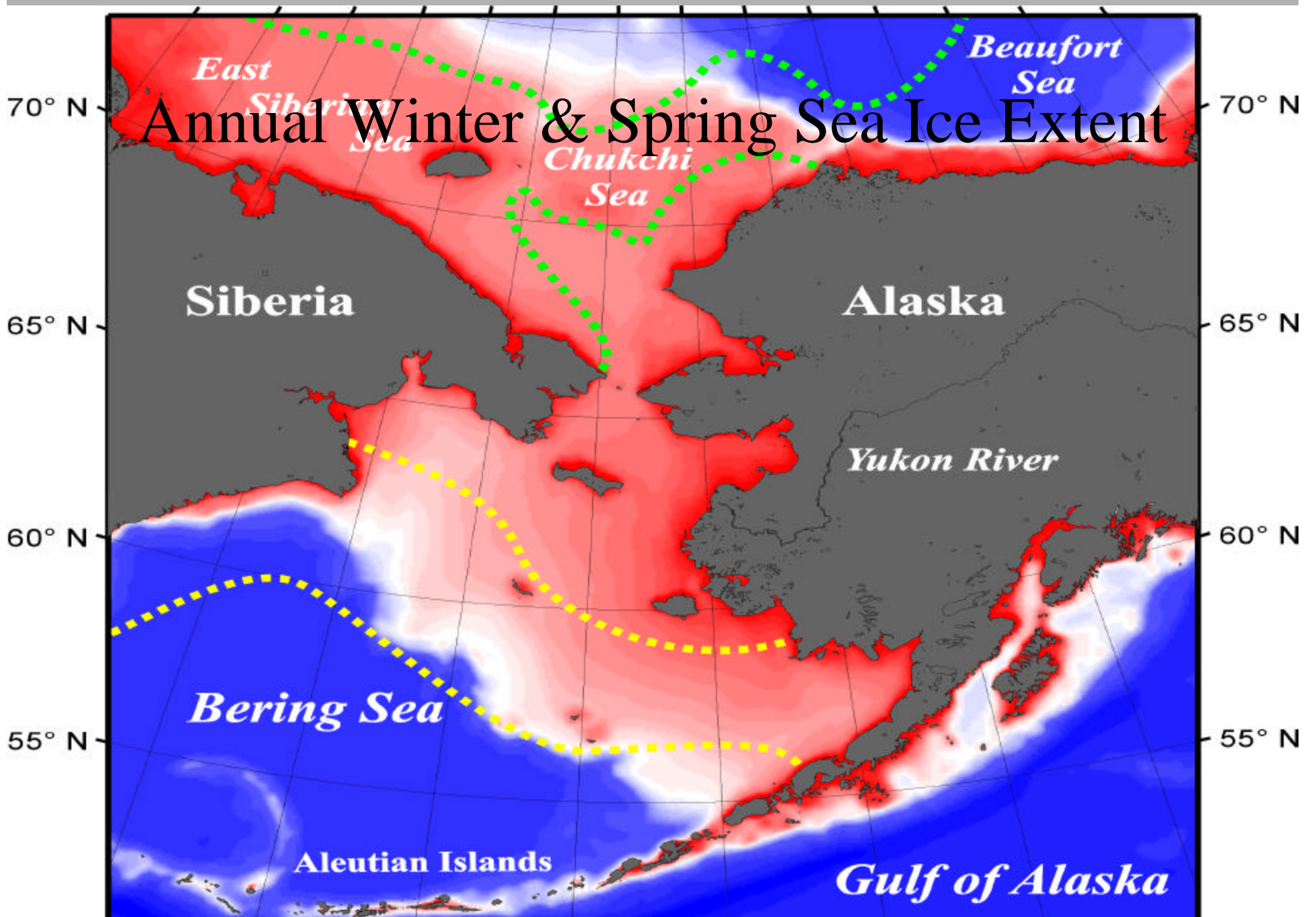
Scientists: 26

Crusing speed: 12 knots



Design: complete
NSF Funding: FY07?
Completion: FY09

Annual Winter & Spring Sea Ice Extent



Where Are We Now

- **Scientific Mission Requirements April 2001**
- **Concept Design – Aug 2001**
- **Model Testing – April 2002**
- **Preliminary Design – Jan 2003**
- **Construction Design – July 2004**
- **Design Submitted to NSF – December 2004**

Tasks Remaining before Construction

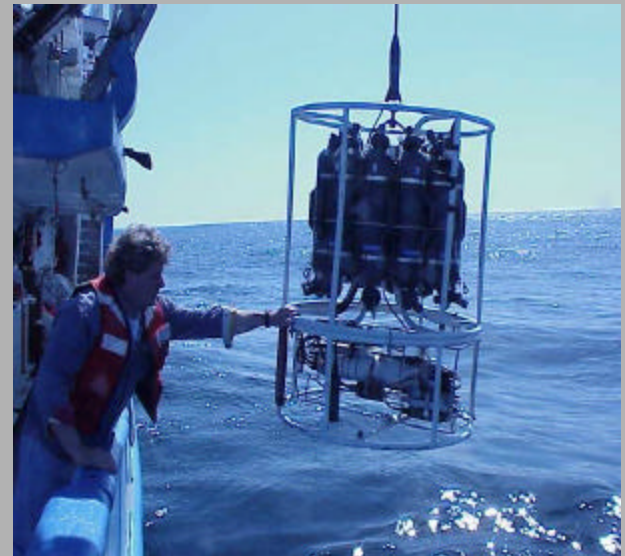
Final Design Spiral

Updated Science Instrumentation

Enhance ADA configuration

Update Science Justification

Encourage Community Support

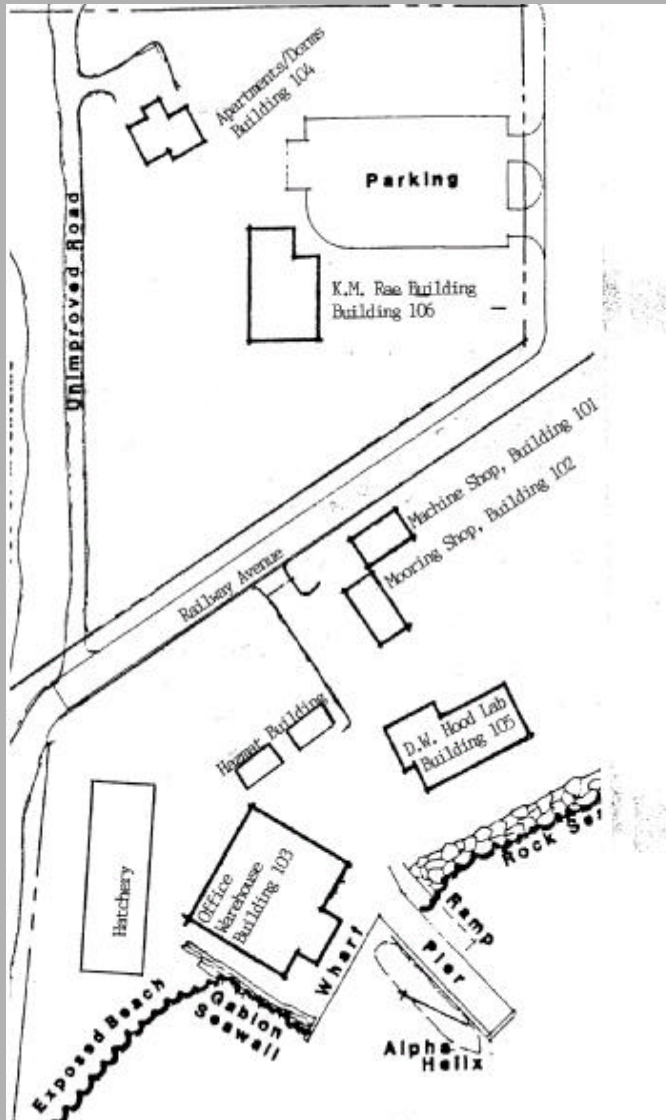


Seward Marine Center

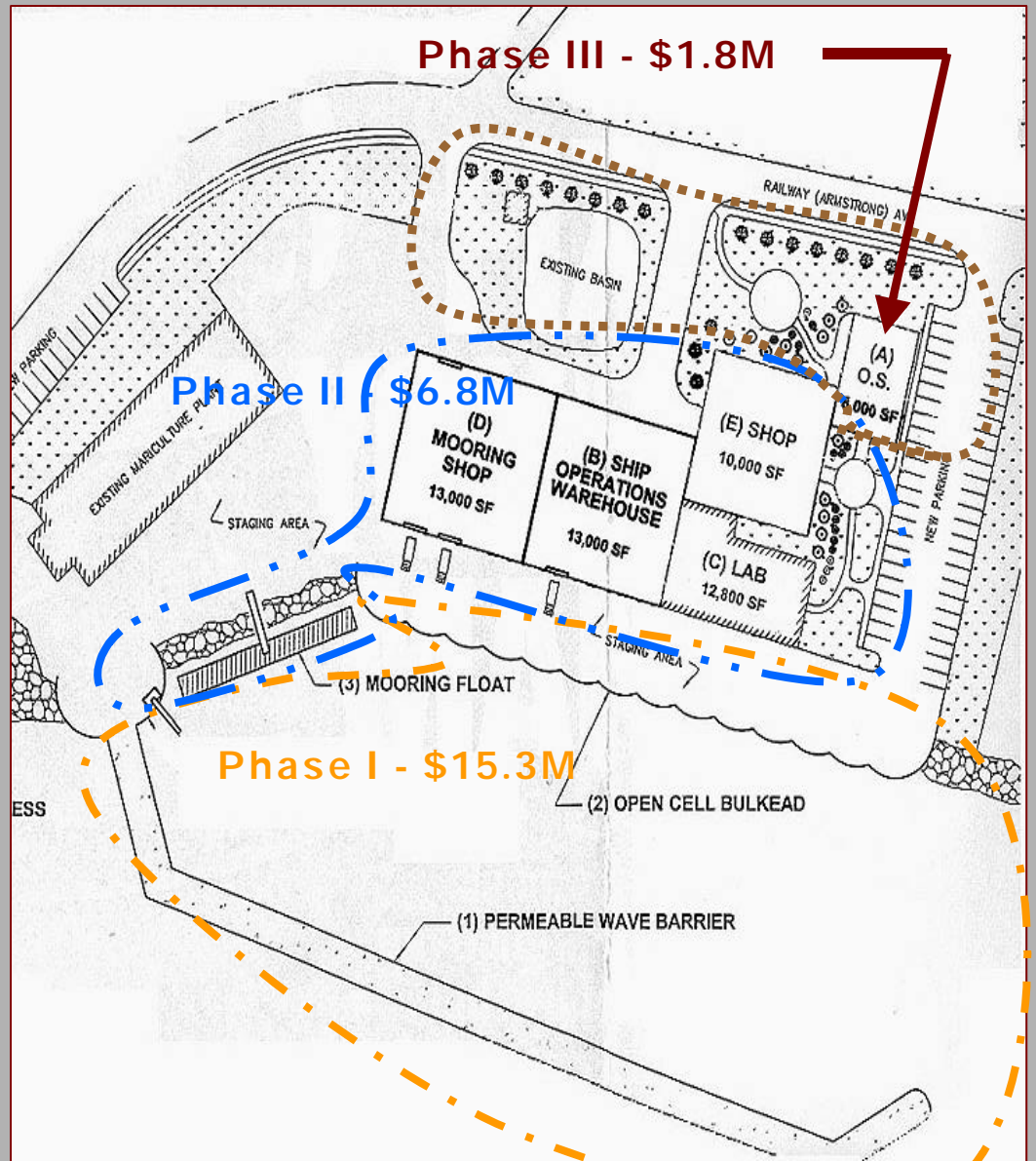
ARRV Support Needs

- All Weather Dock
- Dedicated Warehouse
- Shops
- Administrative Offices

Current Facility

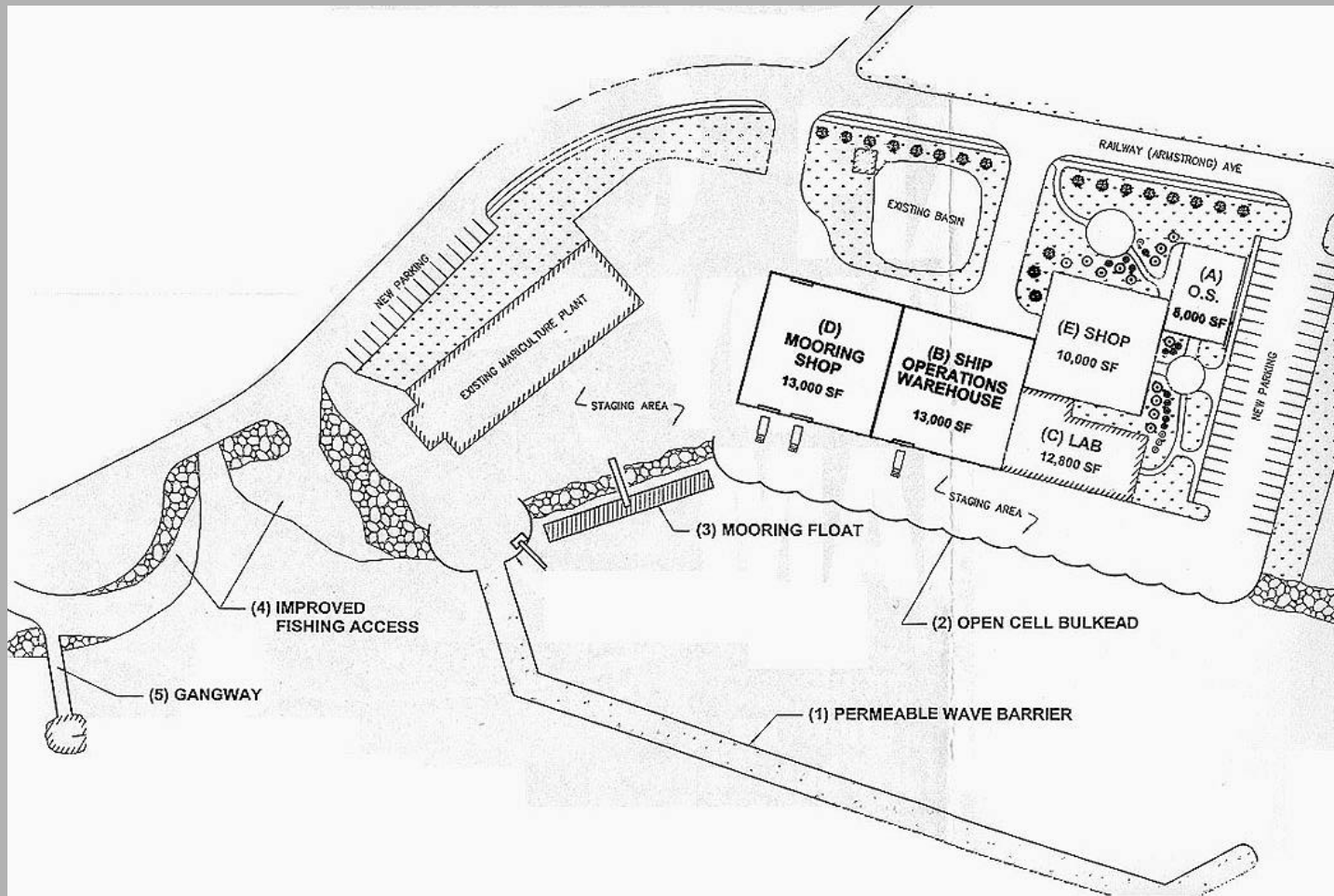


Proposed Facility



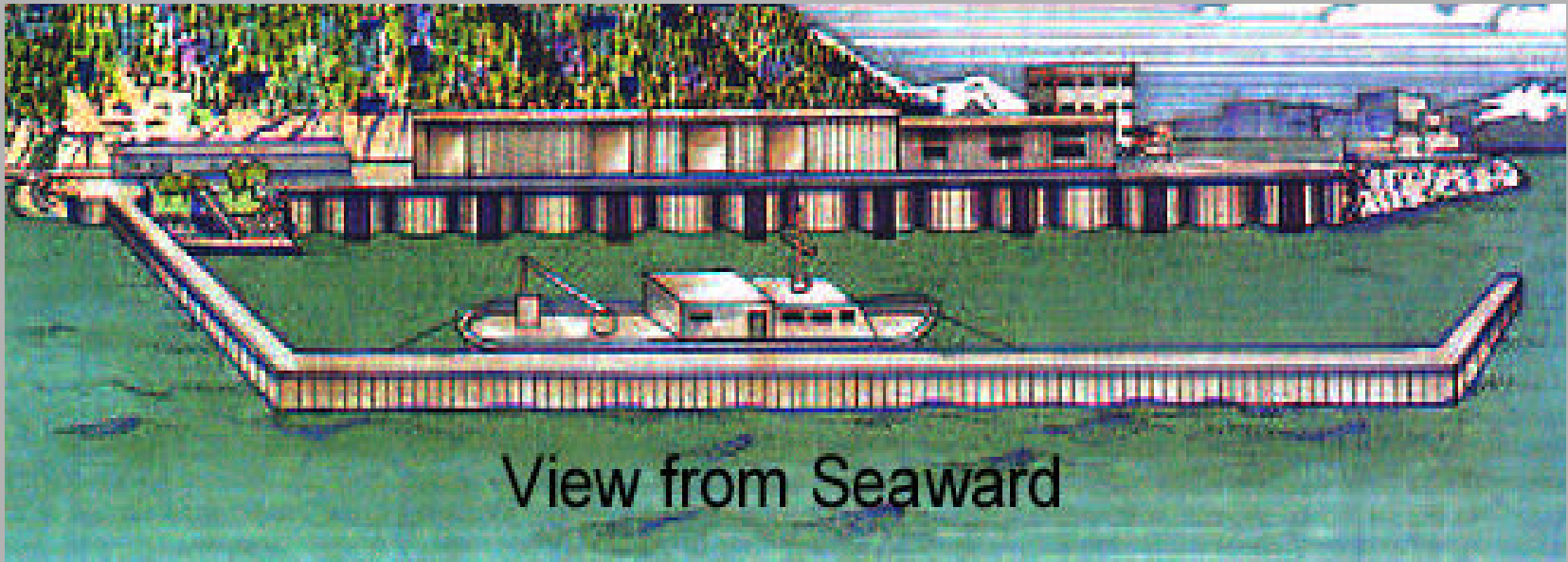
Seward Marine Center

Conceptual Plan



Seward Marine Center

Conceptual Plan



View from Seaward



R/V Alpha Helix



