

Status of ARR V Design

FIC Meeting

5 Oct 2005

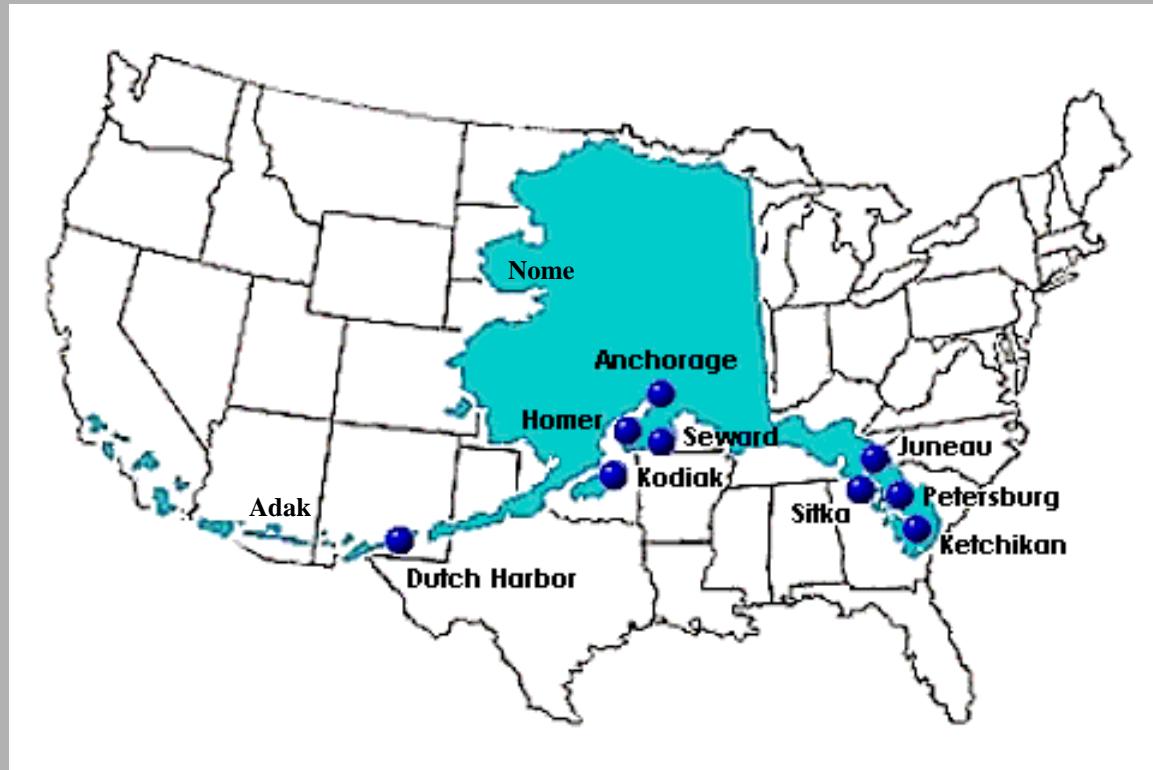


Alaska In Perspective

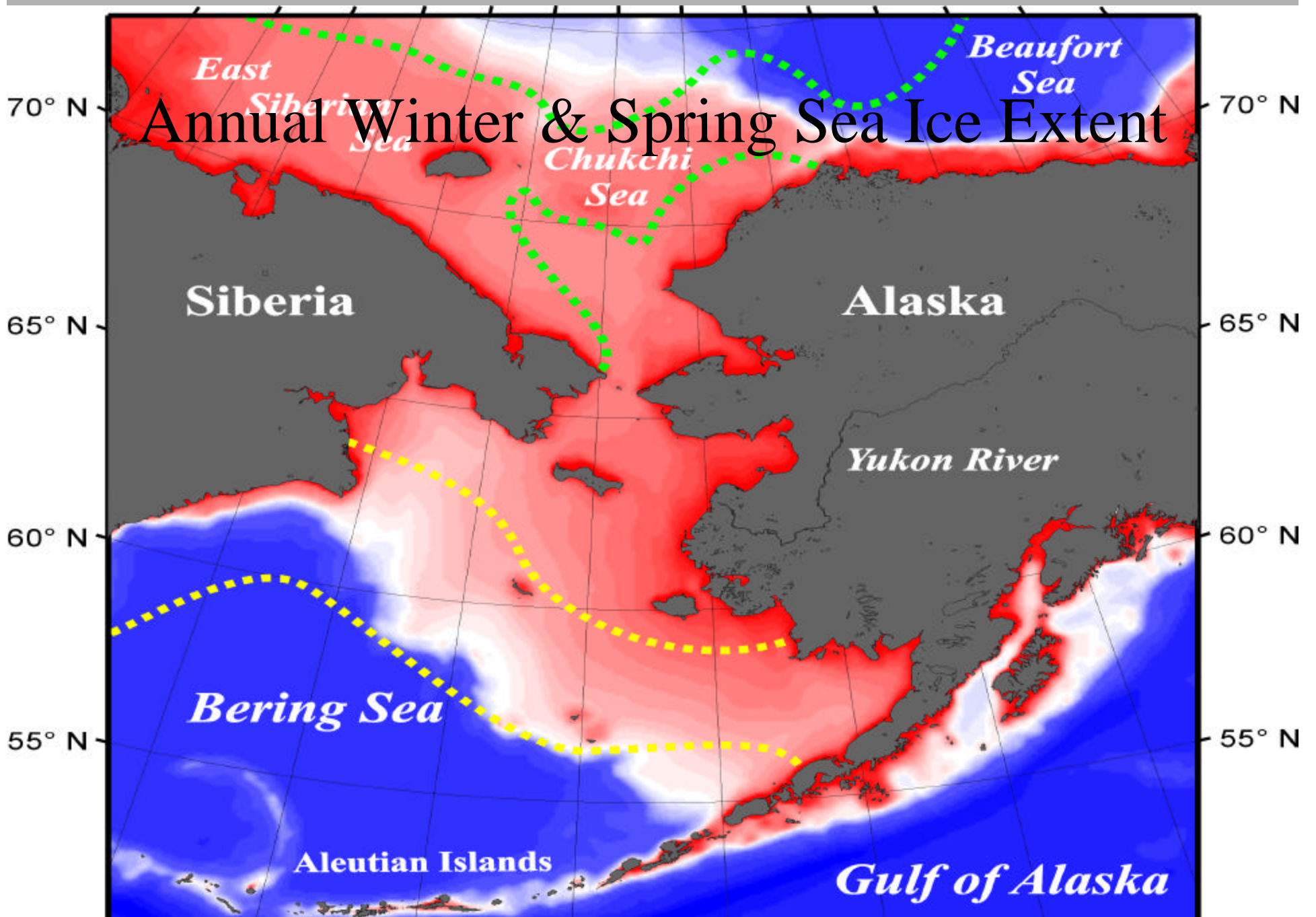
Huge Coastline

Long Distances

Nasty Weather



Annual Winter & Spring Sea Ice Extent



Where Are We Now

- **Scientific Mission Requirements April 2001**
- **Concept Design – Aug 2001**
- **Model Testing – April 2002**
- **Preliminary Design – Jan 2003**
- **Construction Design – July 2004**

Tasks Remaining before Construction

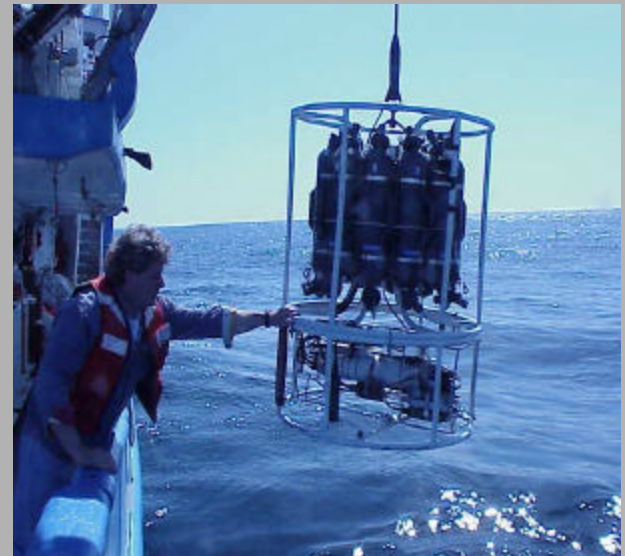
Final Design Spiral

Updated Science Instrumentation

Enhance ADA configuration

Update Science Justification

Encourage Community Support

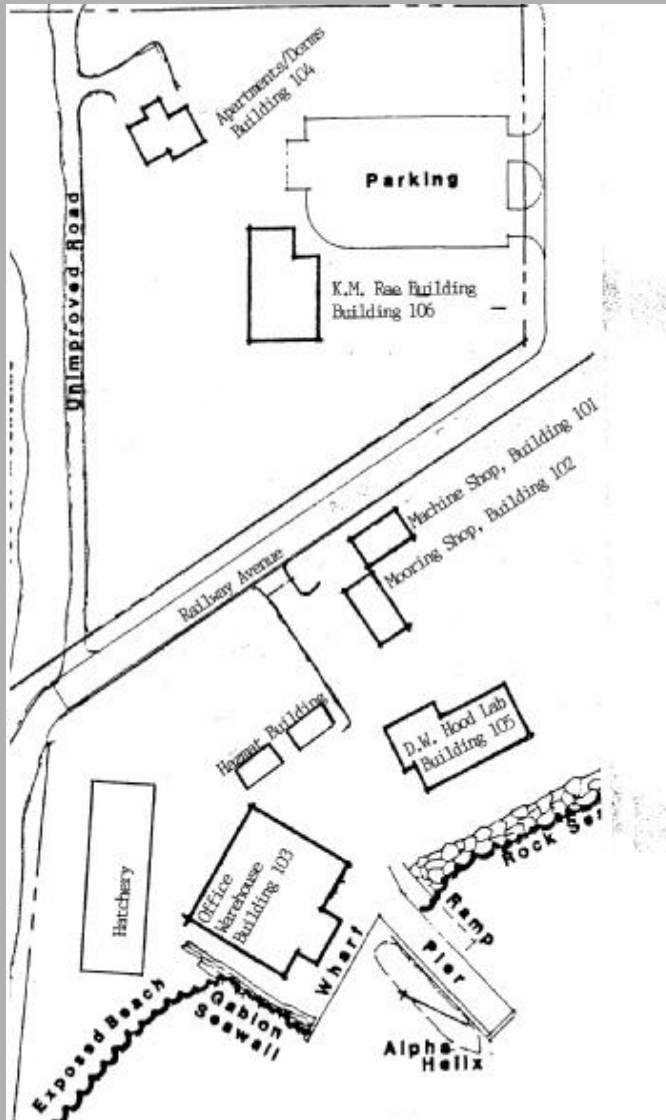


Seward Marine Center

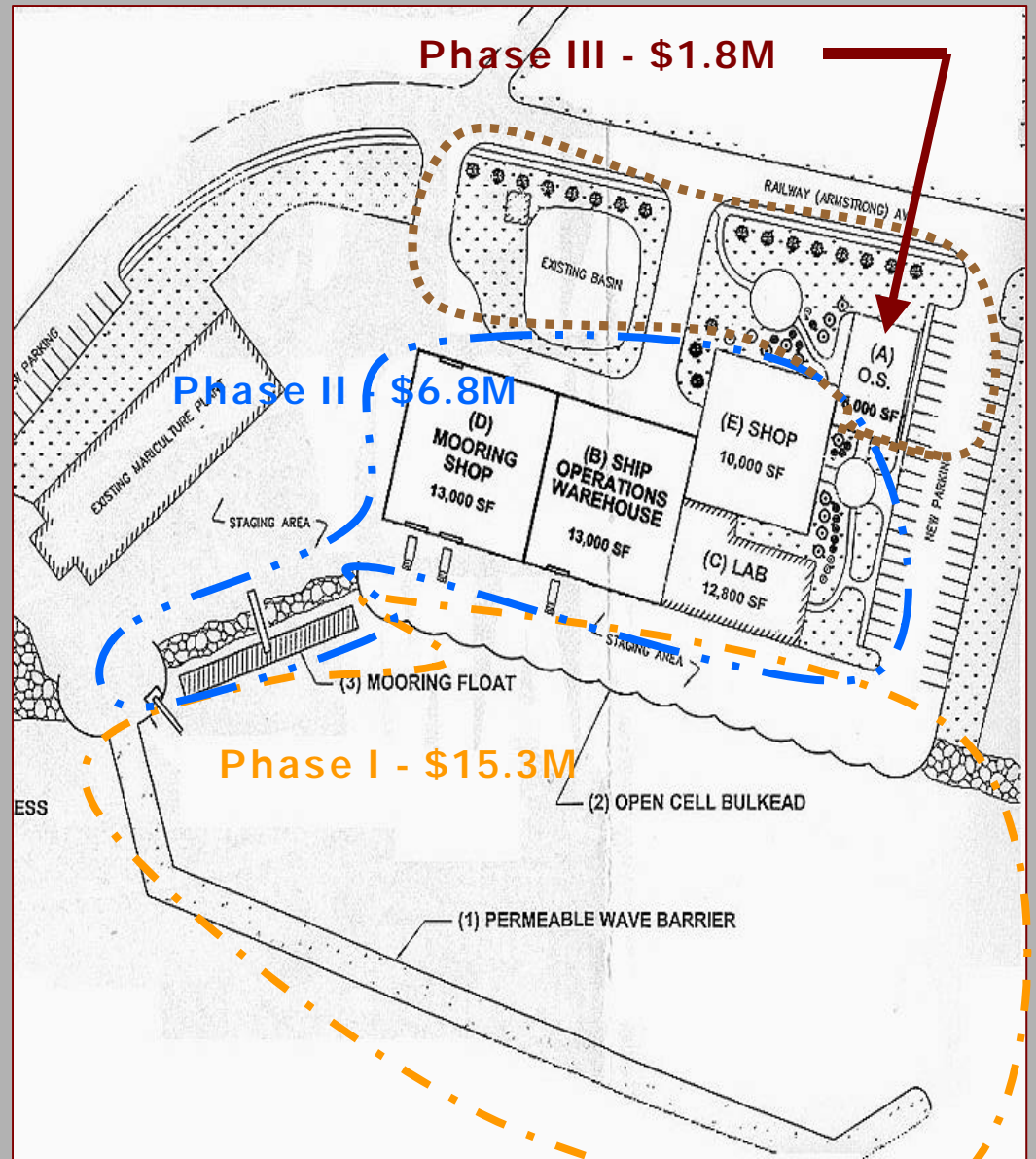
ARRV Support Needs

- **All Weather Dock**
- **Dedicated Warehouse**
- **Shops**
- **Administrative Offices**

Current Facility

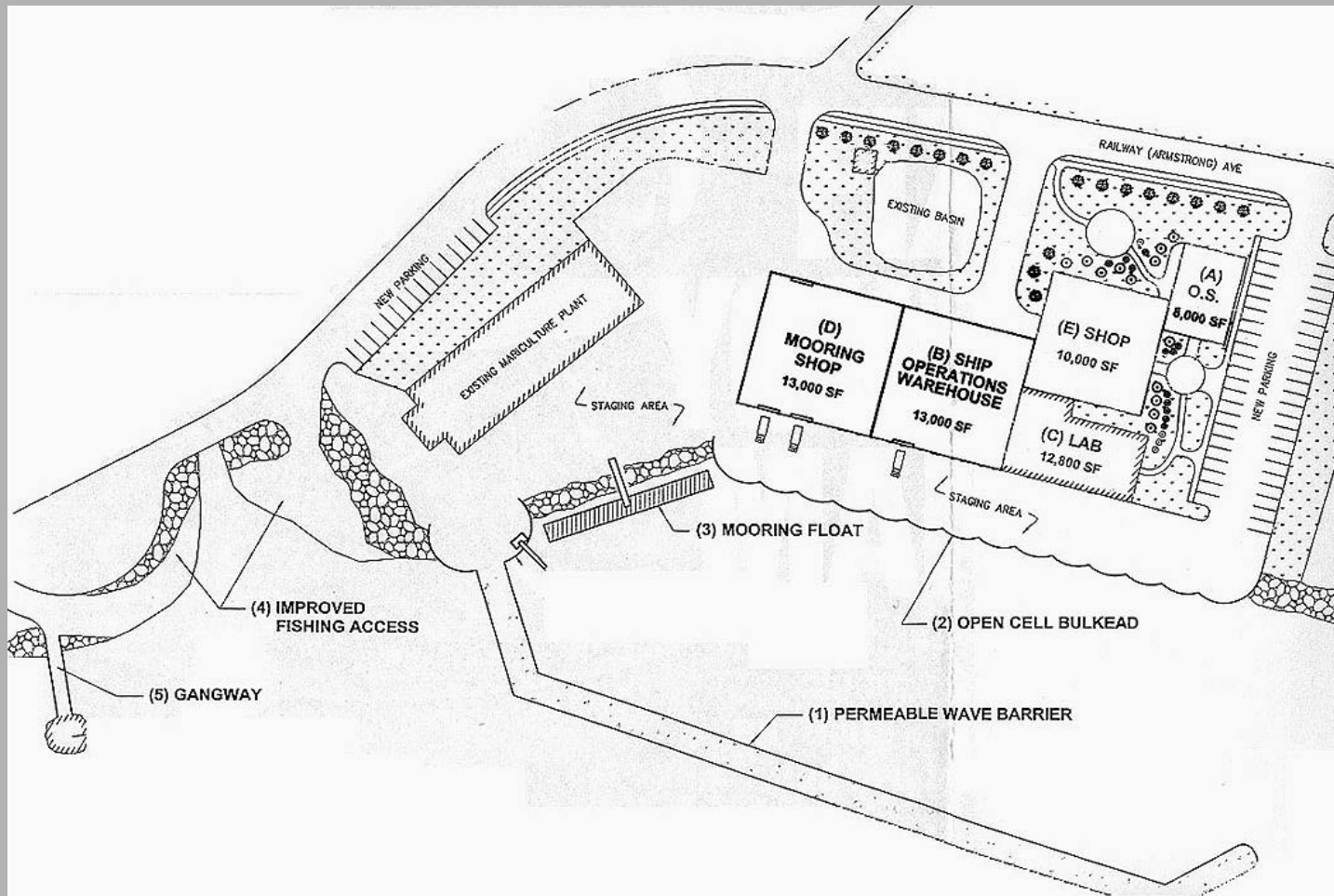


Proposed Facility



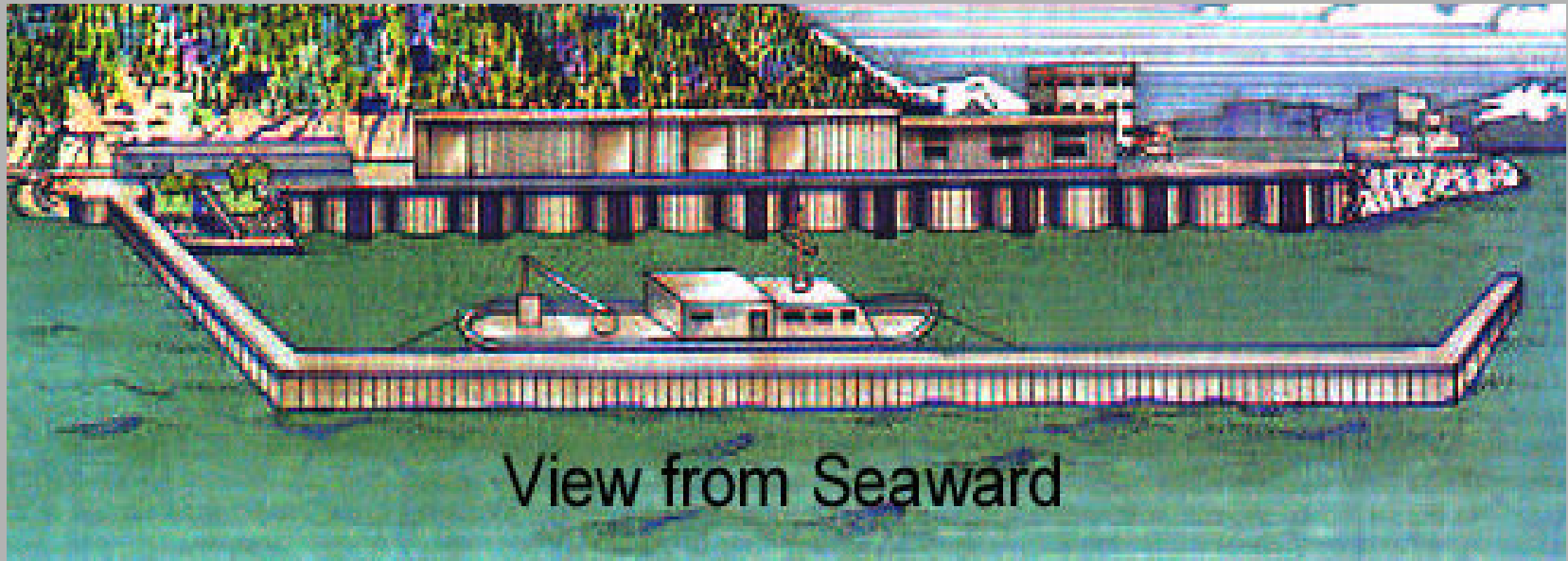
Seward Marine Center

Conceptual Plan



Seward Marine Center

Conceptual Plan



View from Seaward

Seward Marine Center

Ship & Dock Construction Timeline

	2005	2006	2006	2006	2006	2007	2007	2007	2007	2008	2008	2008
	Oct - Dec	Jan - Mar	Apr - Jun	Jul - Sep	Oct - Dec	Jan - Mar	Apr - Jun	Jul - Sep	Oct - Dec	Jan - Mar	Apr - Jun	Jul - Sep
Ship Construction												
Dock Construction												
Final Design Waterfront & Dock												
Develop Specs & RFP												
Issue RFP & Responses												
Evaluate & Award												
Dock Construction												
Shore Construction												
Final Design for Shore Const.												
Develop Specs & RFP												
Issue RFP & Responses												
Evaluate & Award												
Construct Admin Floor												
Construct Shops & Whse												
Construct Mooring Shop												
Complete Outside Work												



R/V Alpha Helix