

ADA Design Considerations

U.S. Access Board (Independent Federal Agency)

- Develops and maintains accessibility requirements
- Enforces accessibility standards for federally funded facilities

DRAFT REPORT

“Construction Requirements for Passenger Vessels to Include the Americans with Disabilities Act”

Definition of Passenger Vessels is very broad and can be construed to include research vessels

Recommendations for Accessibility Guidelines
for Passenger Vessels: Final Report
December 2000

Passenger Vessel Access Advisory Committee

Chapter 1	Onboard Accessible Routes	1
Chapter 2	On/Off Accessible Routes	21
Chapter 3	Egress	27
Chapter 4	Emergency Alarms	35
Chapter 5	Toilet and Bathing	45
Chapter 6	Drinking Fountains and Water Coolers	57
Chapter 7	Lodging.	59
Chapter 8	Vehicle Parking.	65
Chapter 9	"Building" Blocks.	69
Chapter 10	Employee Areas	75
Chapter 11	Alterations.	79
Chapter 12	Subchapters C & T	89
Chapter 13	US Coast Guard CFR Report.	99
	ADAAG/Coast Guard Comparison Index	107

ARRV

ADA Design Features

ADA Stateroom

Door – Baltic Room to Wet Lab

Outboard Profile

Main Deck

Aft Working Deck

Baltic Room

Galley / Mess Deck

ARRV - ADA Design Features

Attempt to meet intent of ADA

One ADA stateroom accessible via forward lift

Top bunk in ADA stateroom a pullman

One ADA water closet on main deck

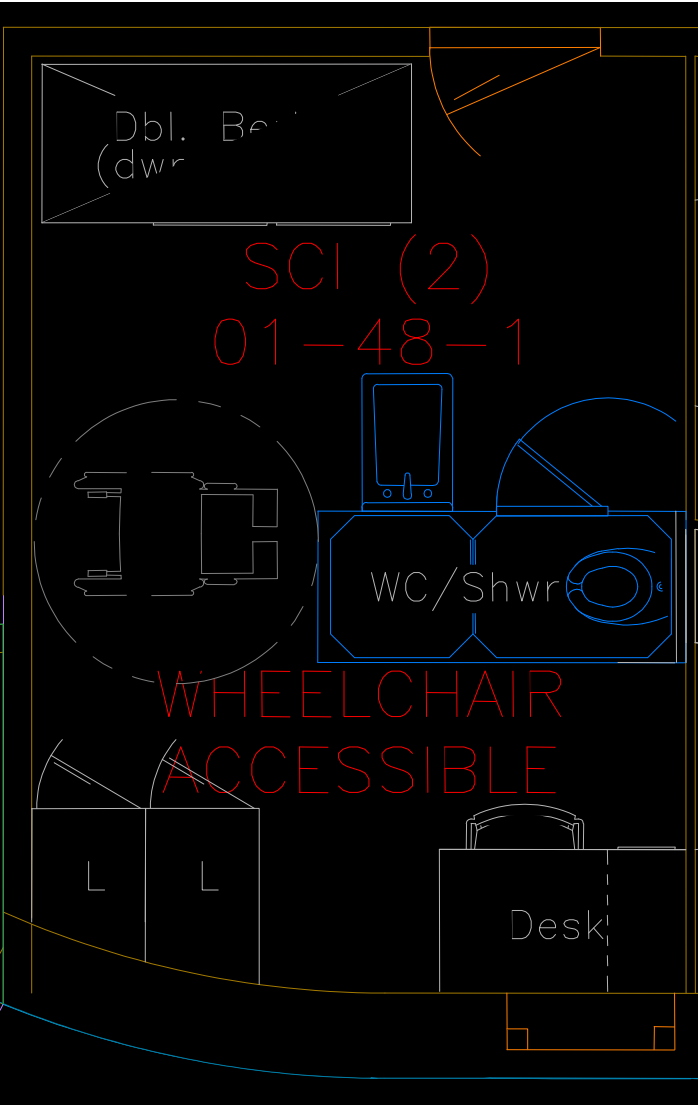
12:1 slope for interior sills to labs on main deck

Navigate over 24" weather sill in Baltic room via cargo door and removable ramp

Four foot wide passageways (36" clear)

Minimum 32" door widths to mess, lounge, spa, gym, and labs

ADA Stateroom



Galley / Mess Deck

