

# Ship Scheduling Committee



Report to RVOC

April 24, 2007

## *What a difference a year makes.....*

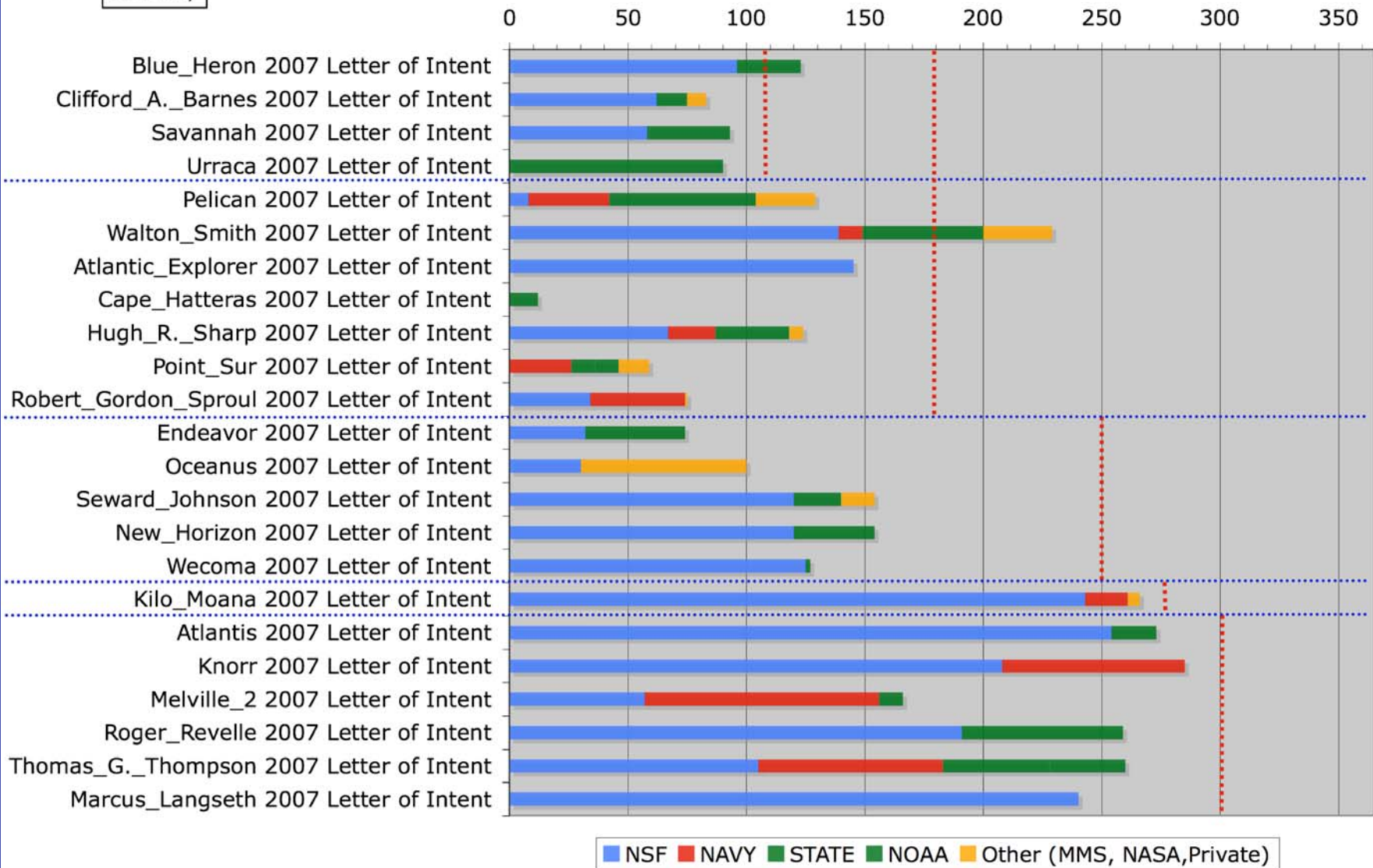
§ The following two slides demonstrates what the UNOLS Fleet was predicting last July (similar to March 06' projection) based on budgetary analysis by the agencies verses the current less-bleak 2007 schedules.

§ This increase in total ship usage was the result of several factors:

- ONR adding tremendous support to the Navy owned assets.
- NSF internal monetary shifts, i.e. transfer 2008 BE ship funds into 2007 and anticipated carry forward.
- New NOAA/DART and foreign work.

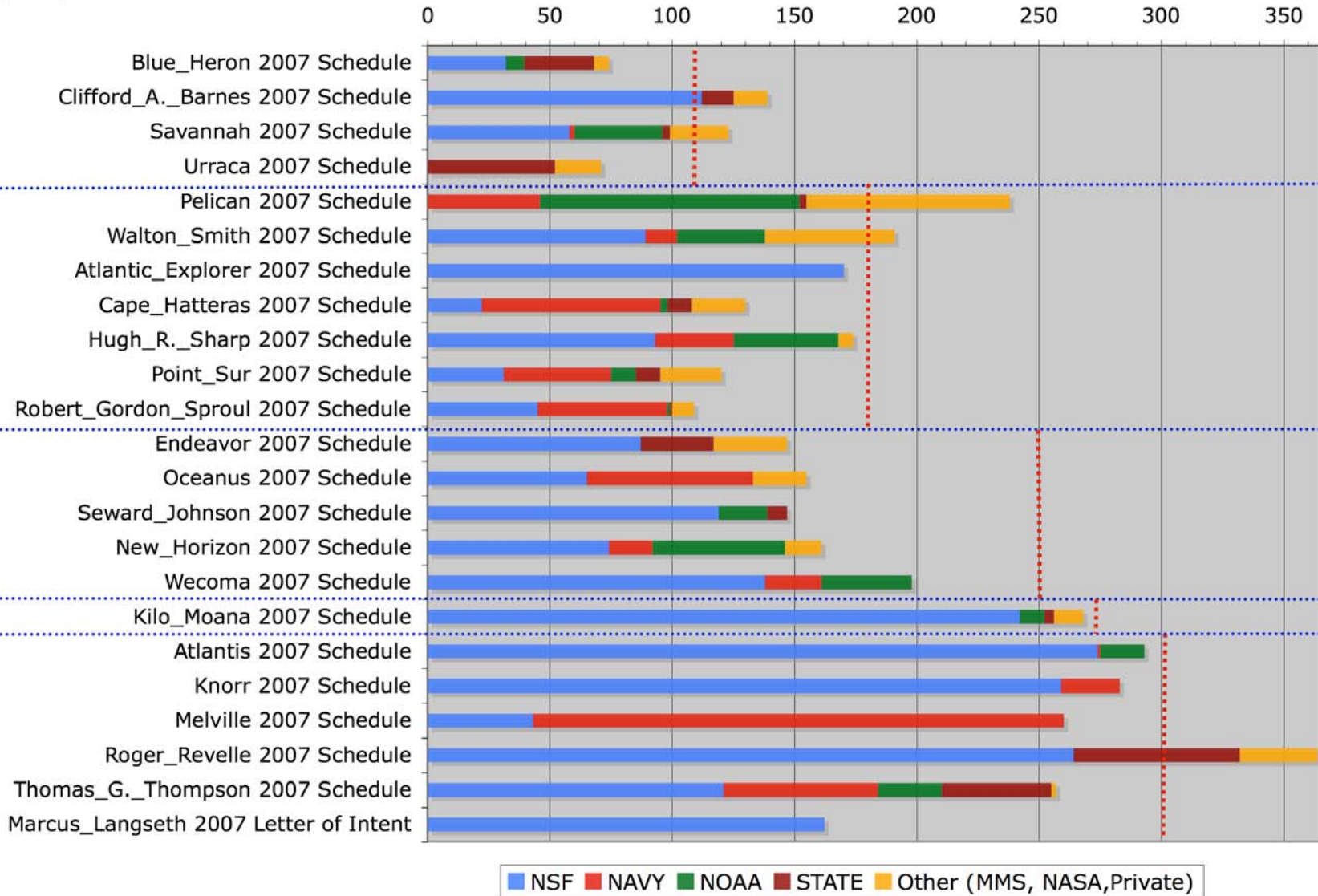
Last July

### 2007 UNOLS Operating Days by Agency



Now

### 2007 UNOLS Operating Days by Agency



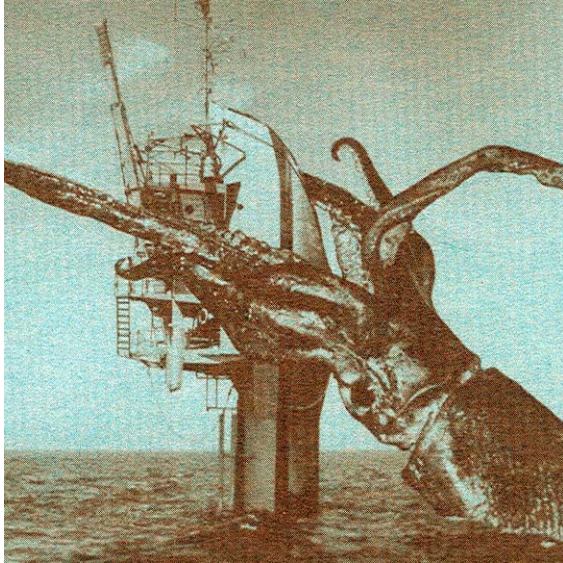
## 2007 Issues:

### Unresolved issues for 2007:

- Venezuelan clearance for *Seward Johnson*- Daley
- Indonesian clearance for *Revelle*- Goldfinger
- Mexican clearance for *New Horizon* -Umfoeher
- *Langseth* schedule- actual sailing date?
- NUWC work on *Thompson*- RFP has been released with no guarantee that UW will get the work

### Resolved issues:

- *Cape Hatteras* escapes lay-up with the *Pelican* sharing a portion of their schedule. A DART cruise was also added.
- Adding NIO work to *Revelle* schedule.
- *Kilo Moana* schedules Weller buoy work.
- NOAA thinks they can straddle fiscal year on *Thompson*
- *Oceanus* moves some ship days to *Cape Hatteras*



*July 06' to March 07'  
Reality vs Science Fiction*

July 06- prediction of total 2007 ship days 3539

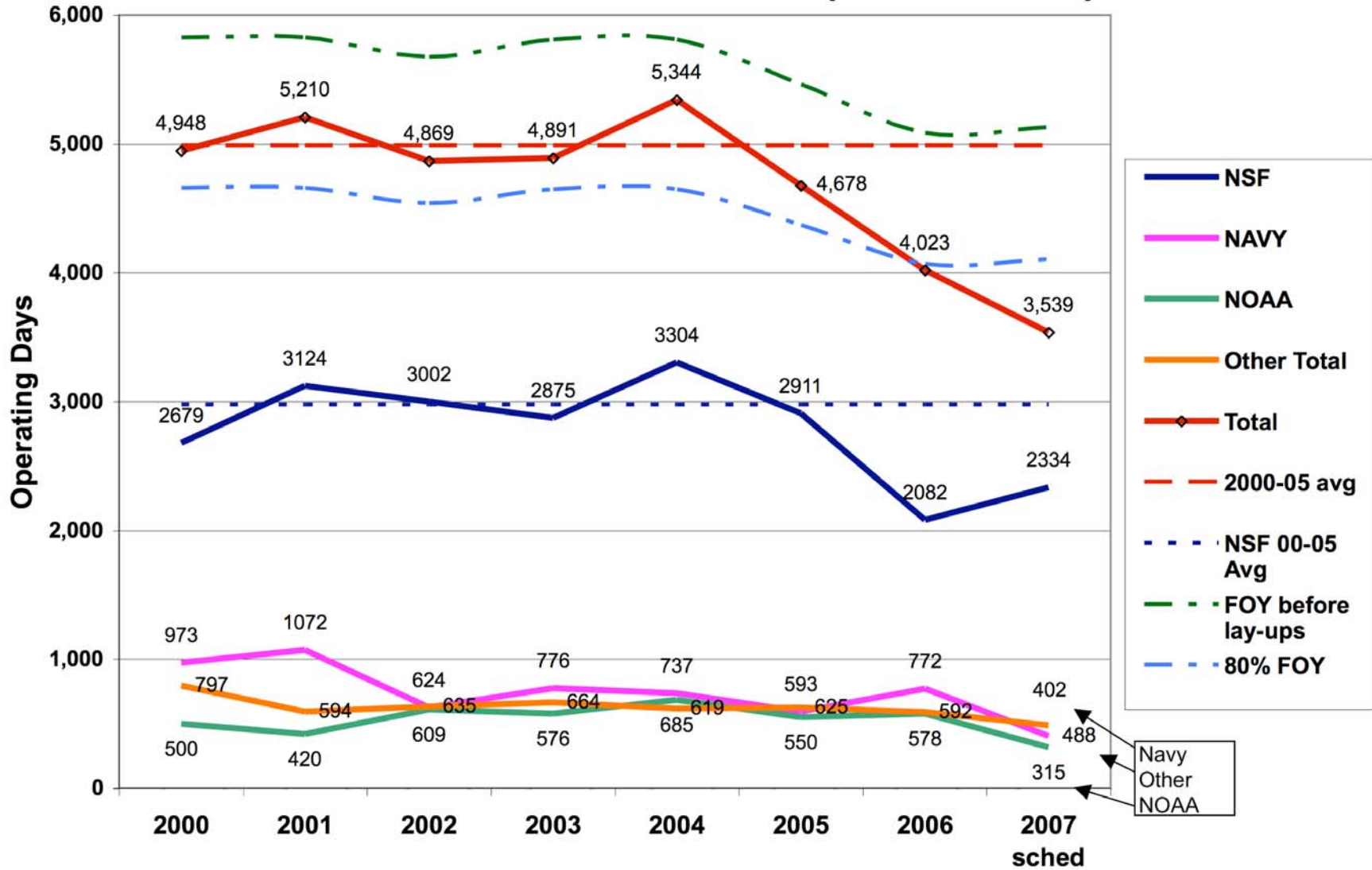
Mar 07- current 2007 schedules reflect 4234 ship days

Mar 07- predictions for 2008 ship days are at 3594



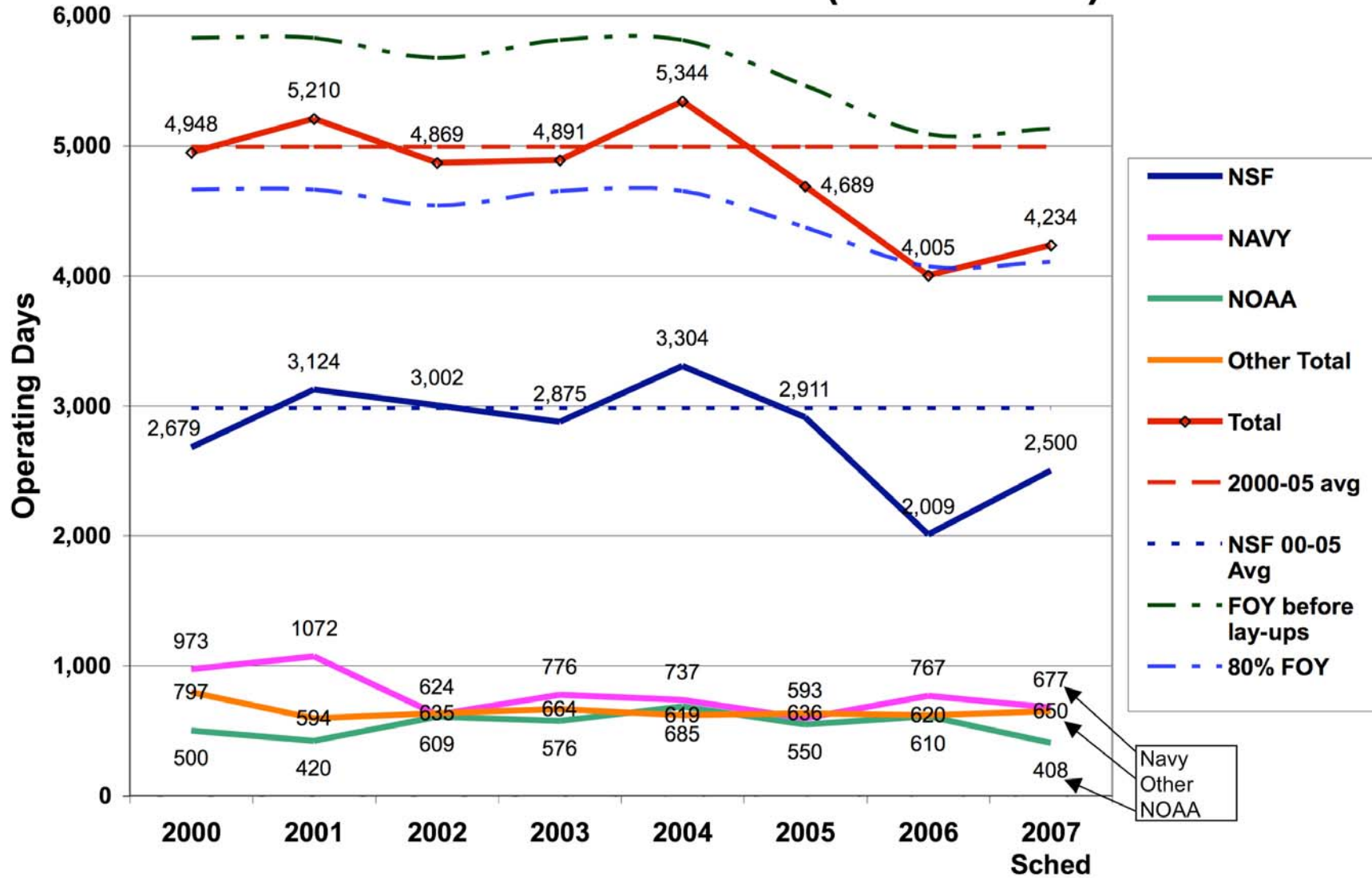
Last July

## UNOLS Fleet Utilization (2000 - 2007)



Now

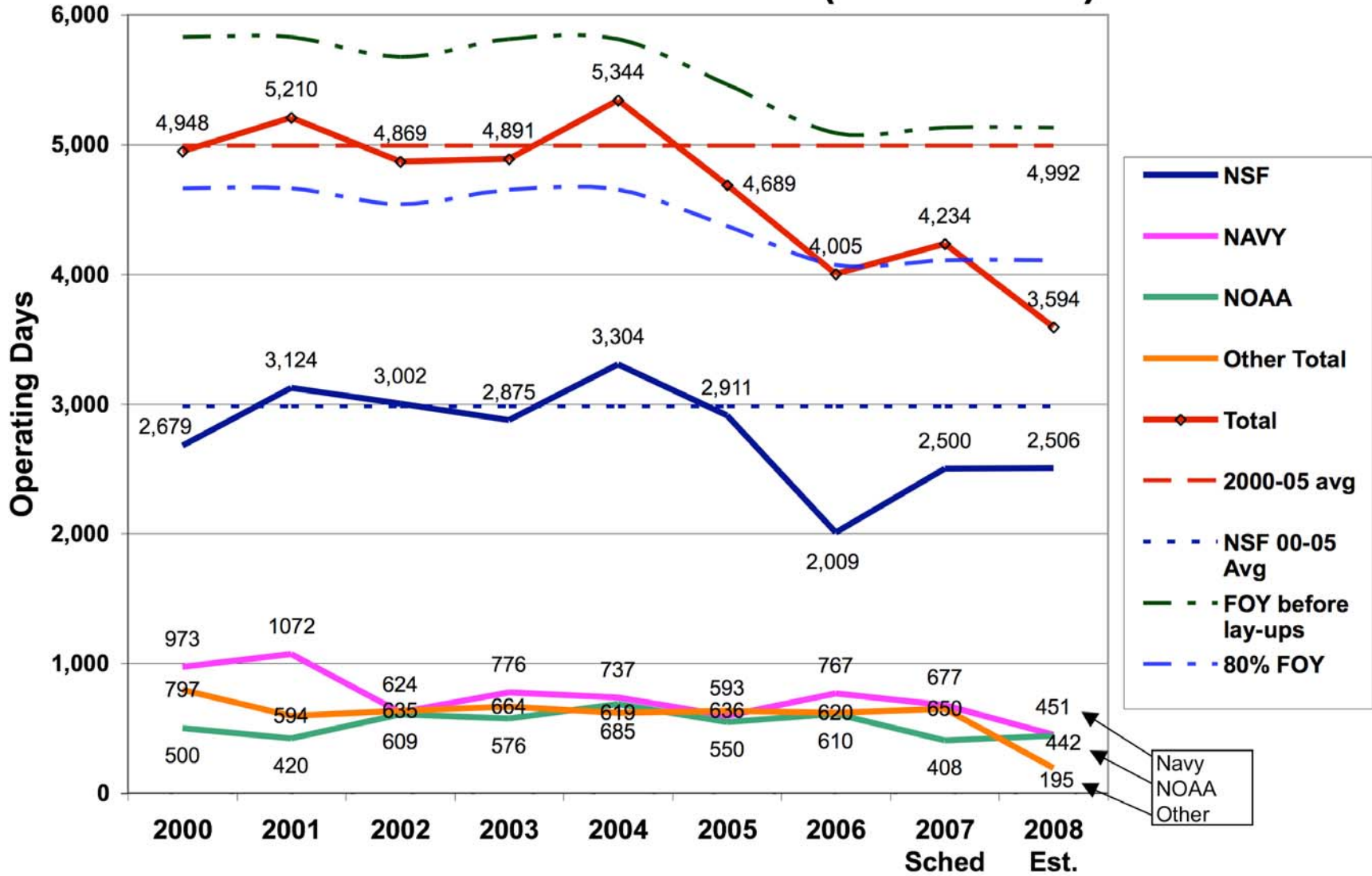
## UNOLS Fleet Utilization (2000 - 2007)





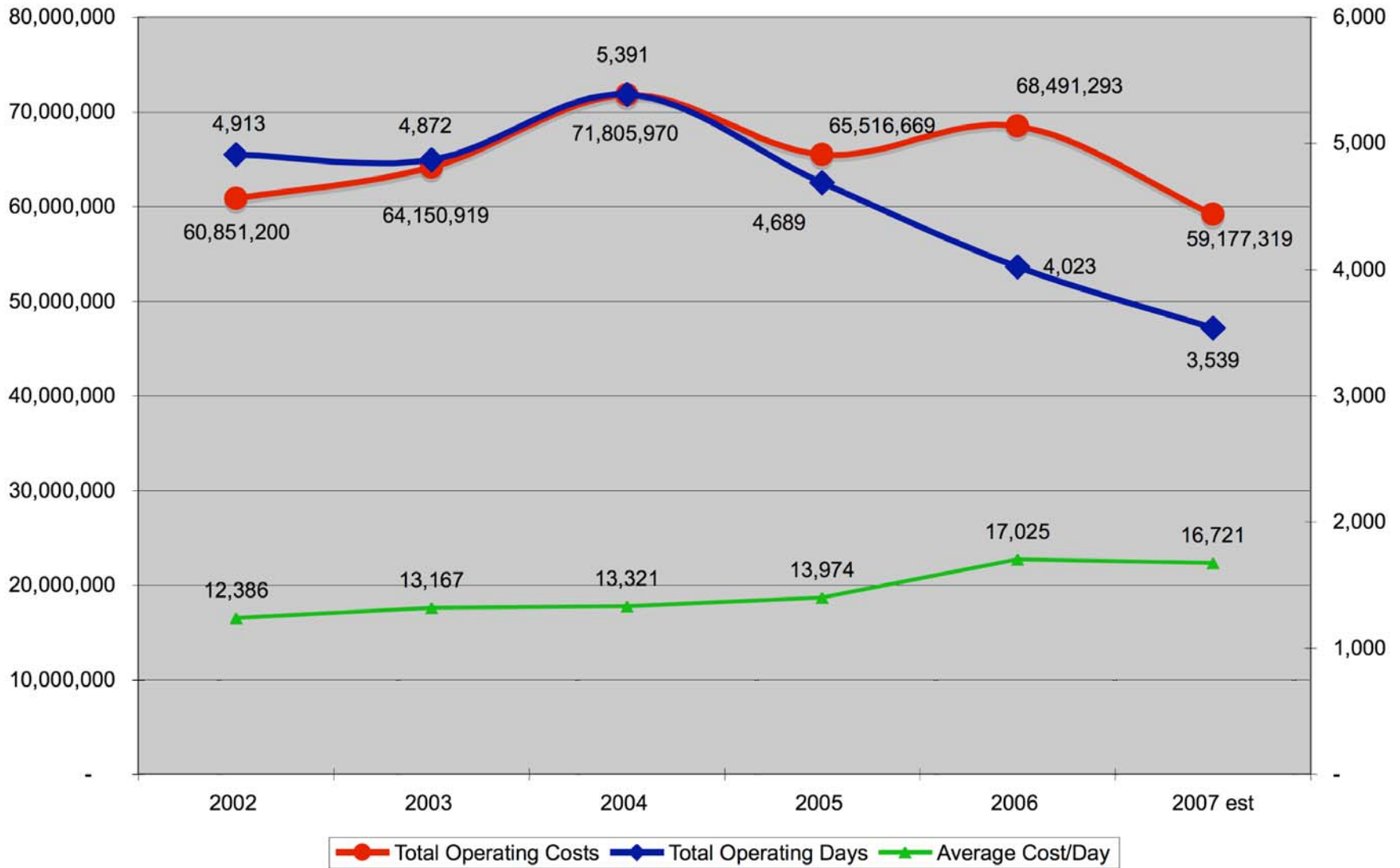
With 2008 STRs

# UNOLS Fleet Utilization (2000 - 2007)



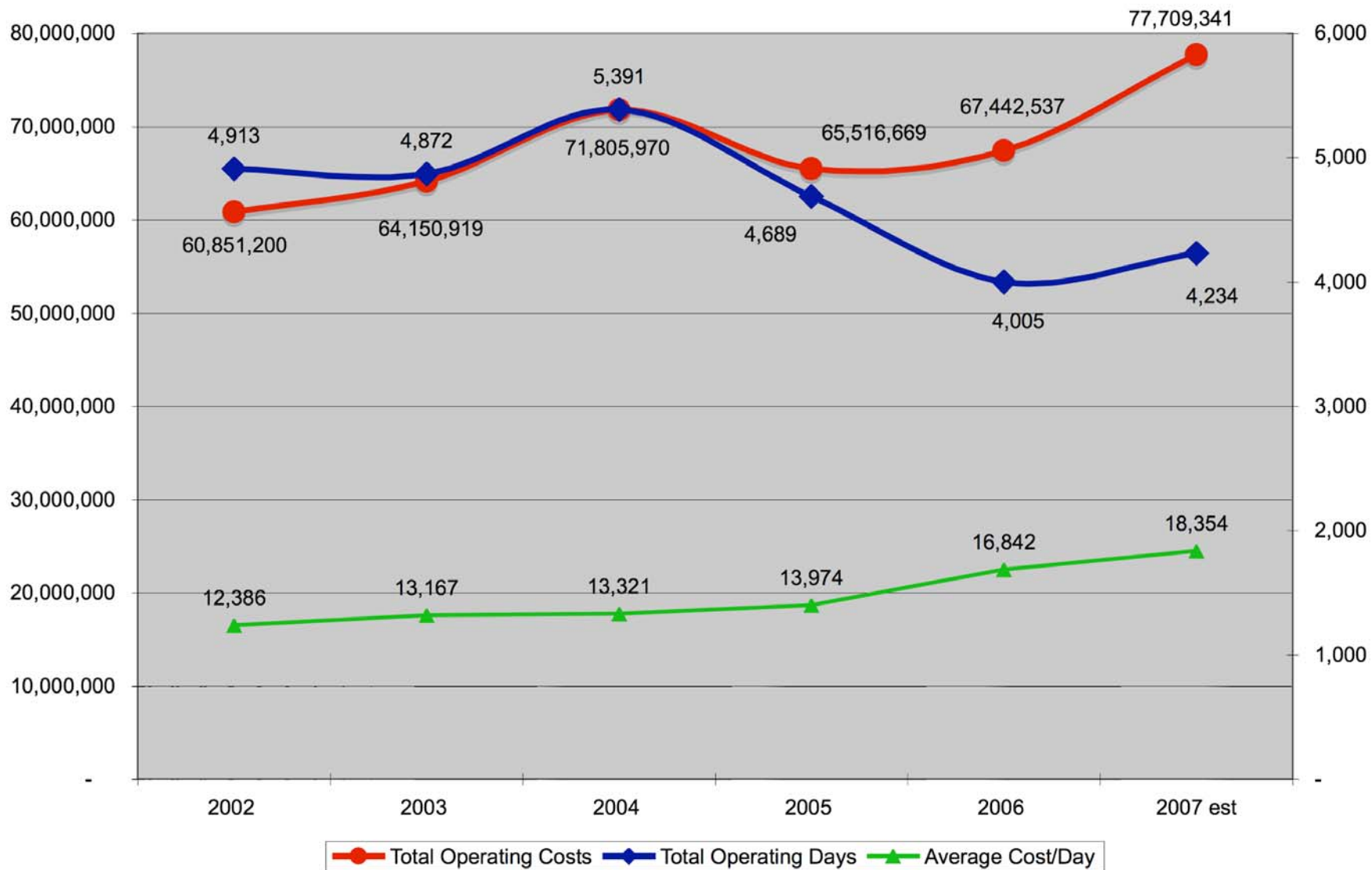
Last July

### 2002 - 2007 UNOLS Fleet Operating Days and Costs



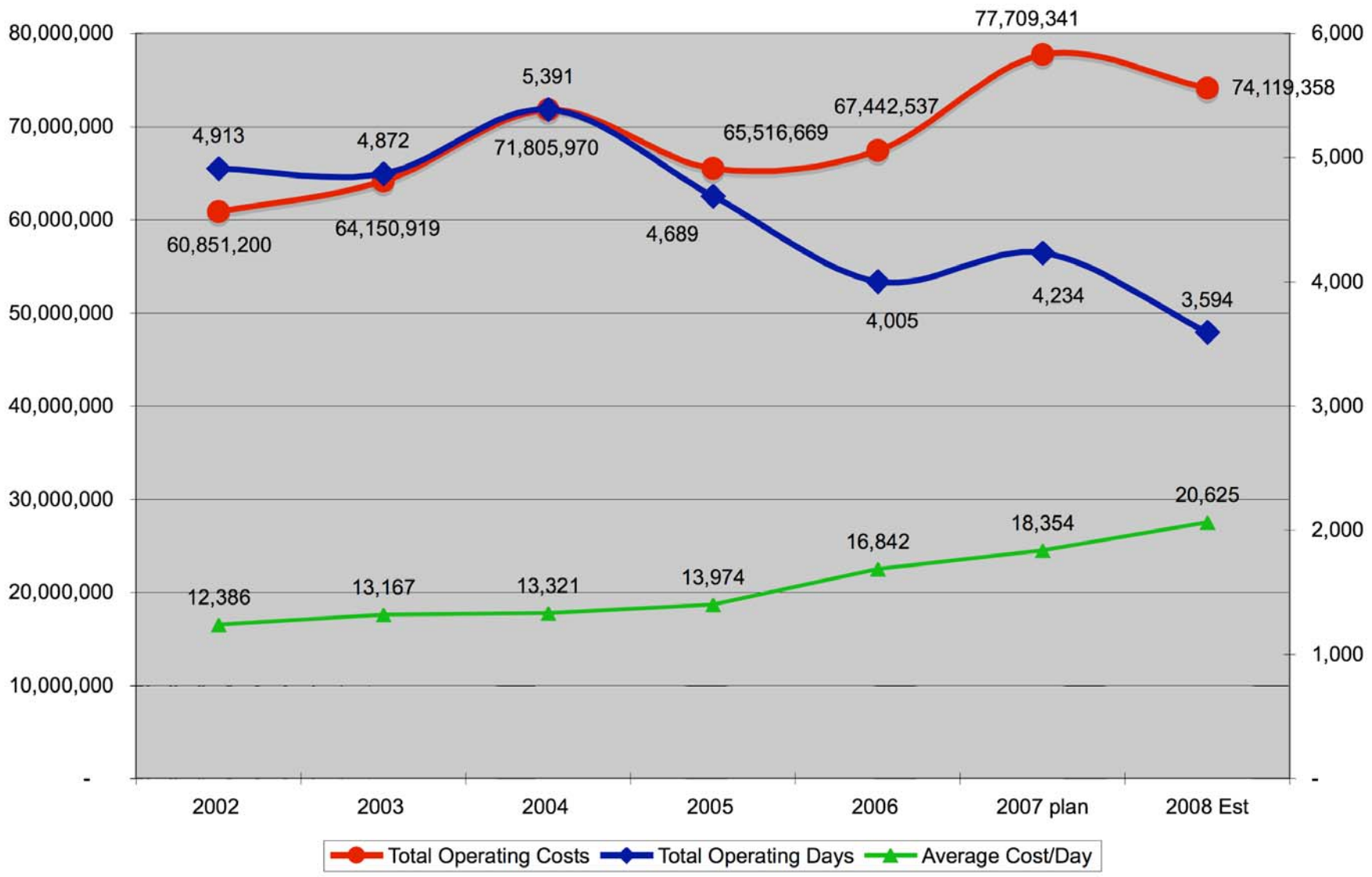
Now

### 2002 - 2007 UNOLS Fleet Operating Days and Costs



With 2008 STRs

### 2002 - 2007 UNOLS Fleet Operating Days and Costs



The story for 2008 is starting to unfold, and may be scripted very differently (possible non-duplicable factors for 2007 were 68 UC days for *Revelle*, 32 of NIO work, Navy's *Melville* support, NSF's BE advance spending). The recommendations for lay-ups need to be considered early on in order to give the scheduling committee focus.

### •2008 Scheduling time-line

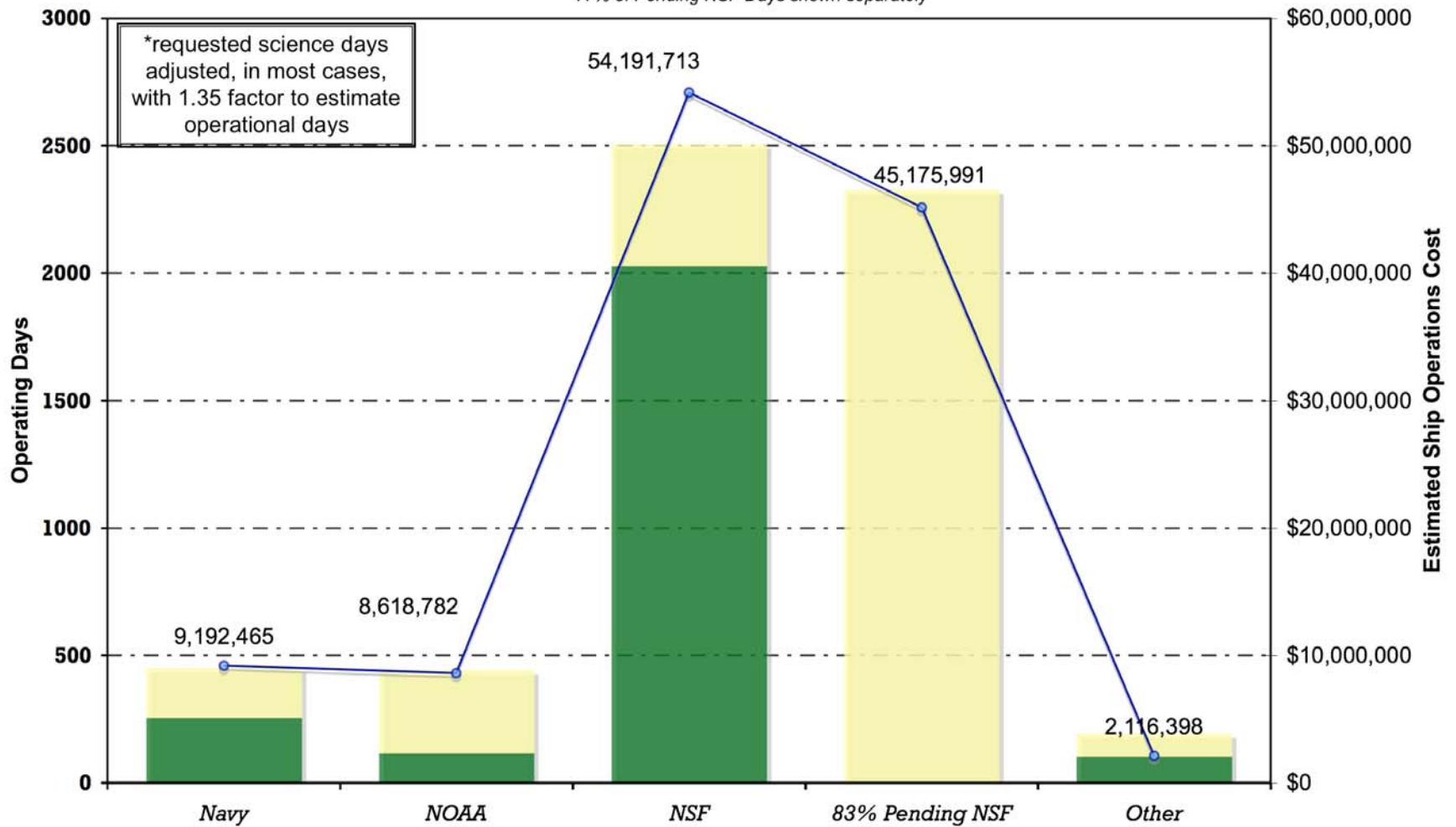
- LOI's should be started at any time and completed by May 15th (before the May NSF panel meetings)*
- Large ship schedulers should meet face-to-face or video conference by mid to late June;*
- Intermediate/Regional/local class ship schedulers should "meet" in mid to late June by conference call, divided by east/west coasts.*
- Culminating in the September- DC meeting for all ship schedulers.*



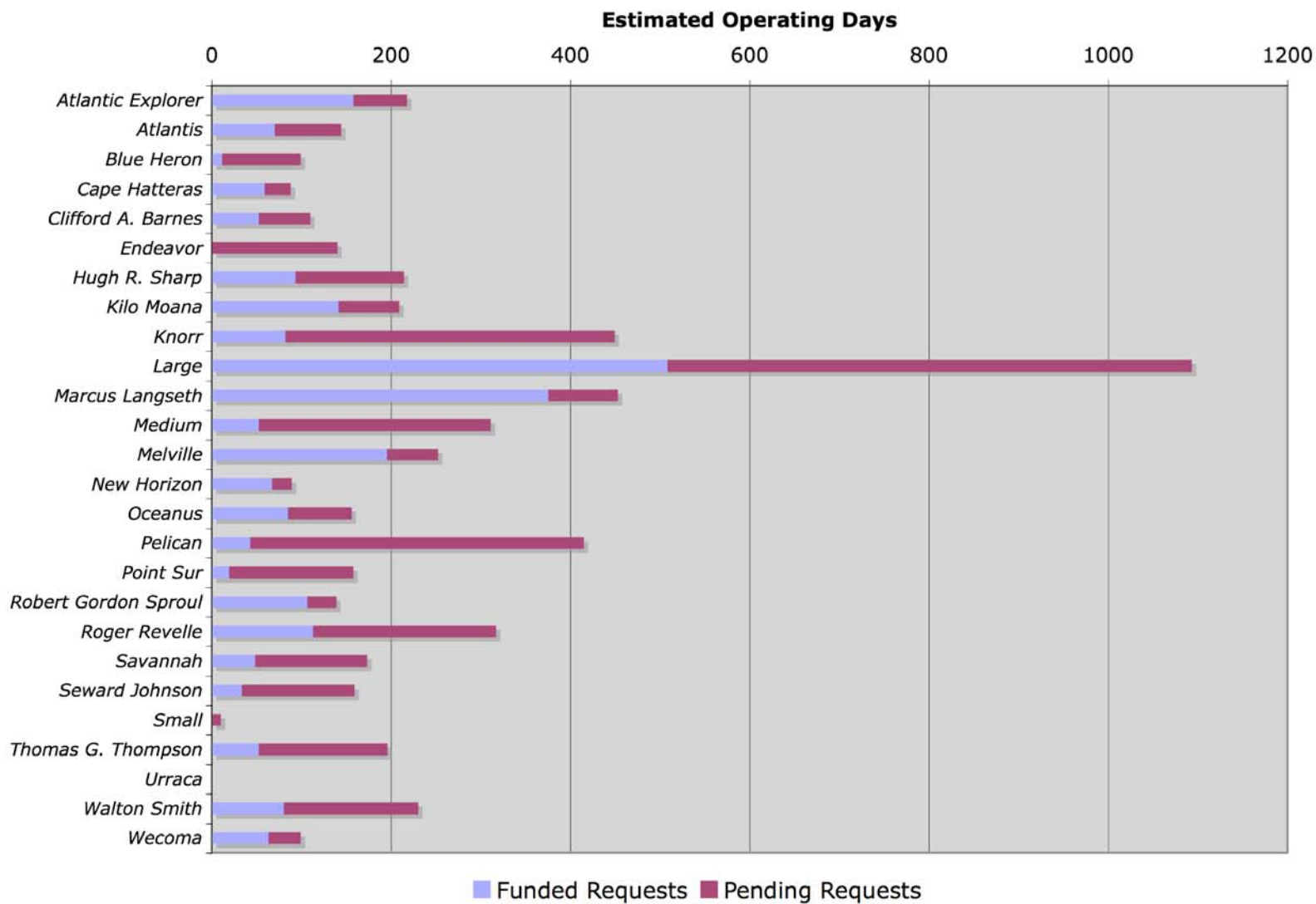
### 2008 Funded and Pending Requests \*

2008 Funded Days Pending Days Total Cost

A % of Pending NSF Days shown separately

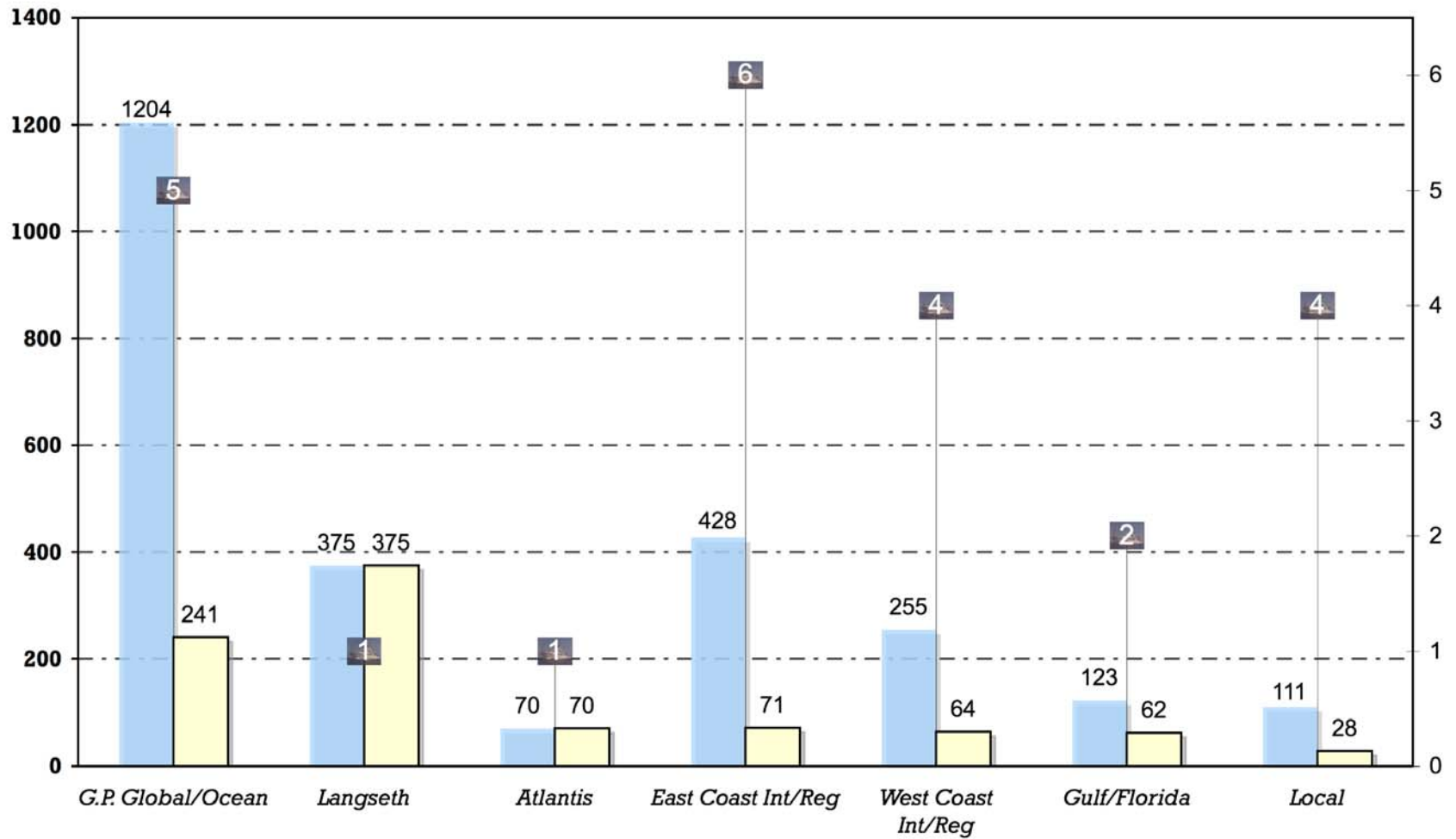


## 2008 Requests by Ship



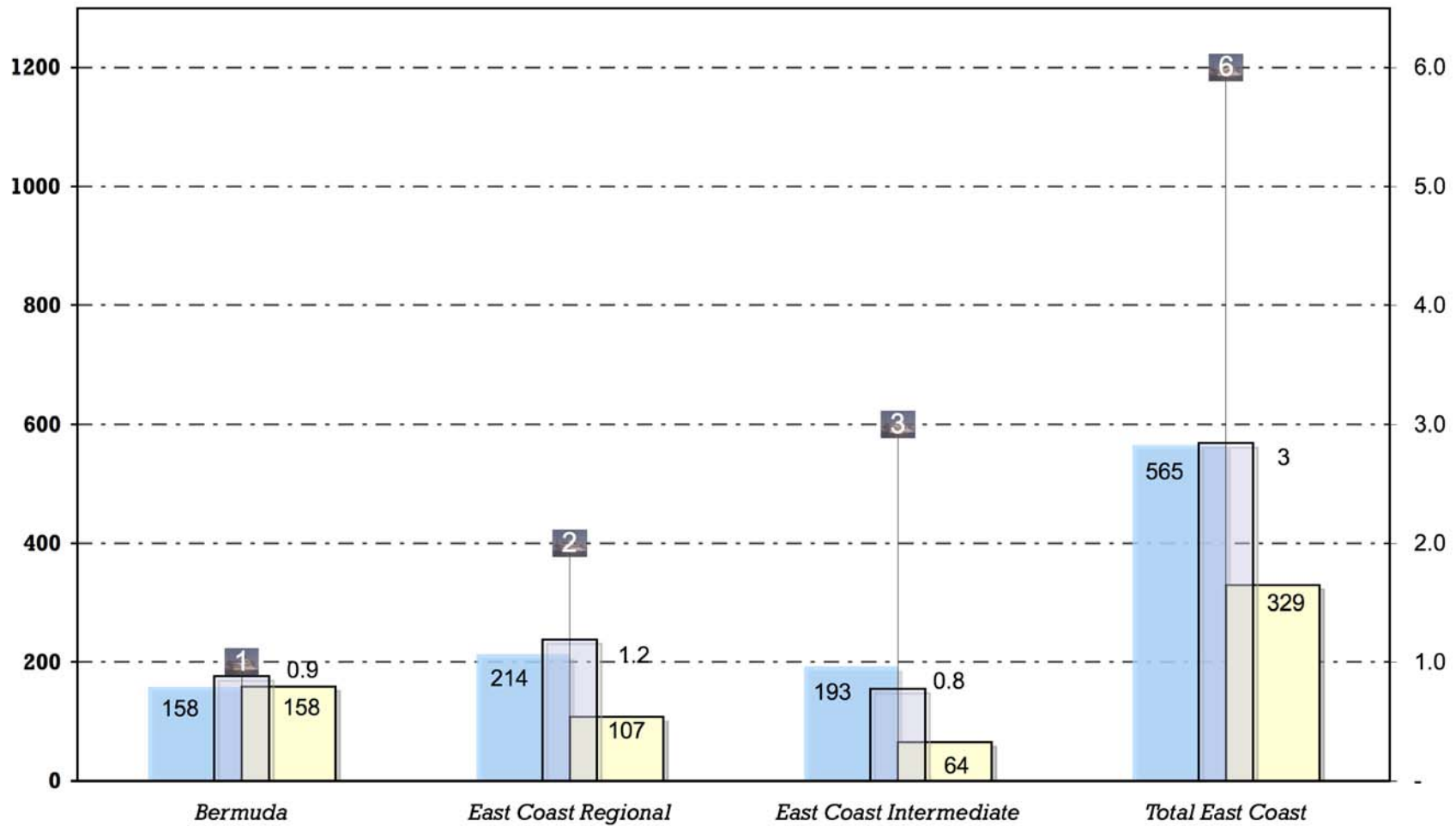
### 2008 Shiptime Requests per Vessel Class/Region

2008 Funded Days    Per Ship    # ships



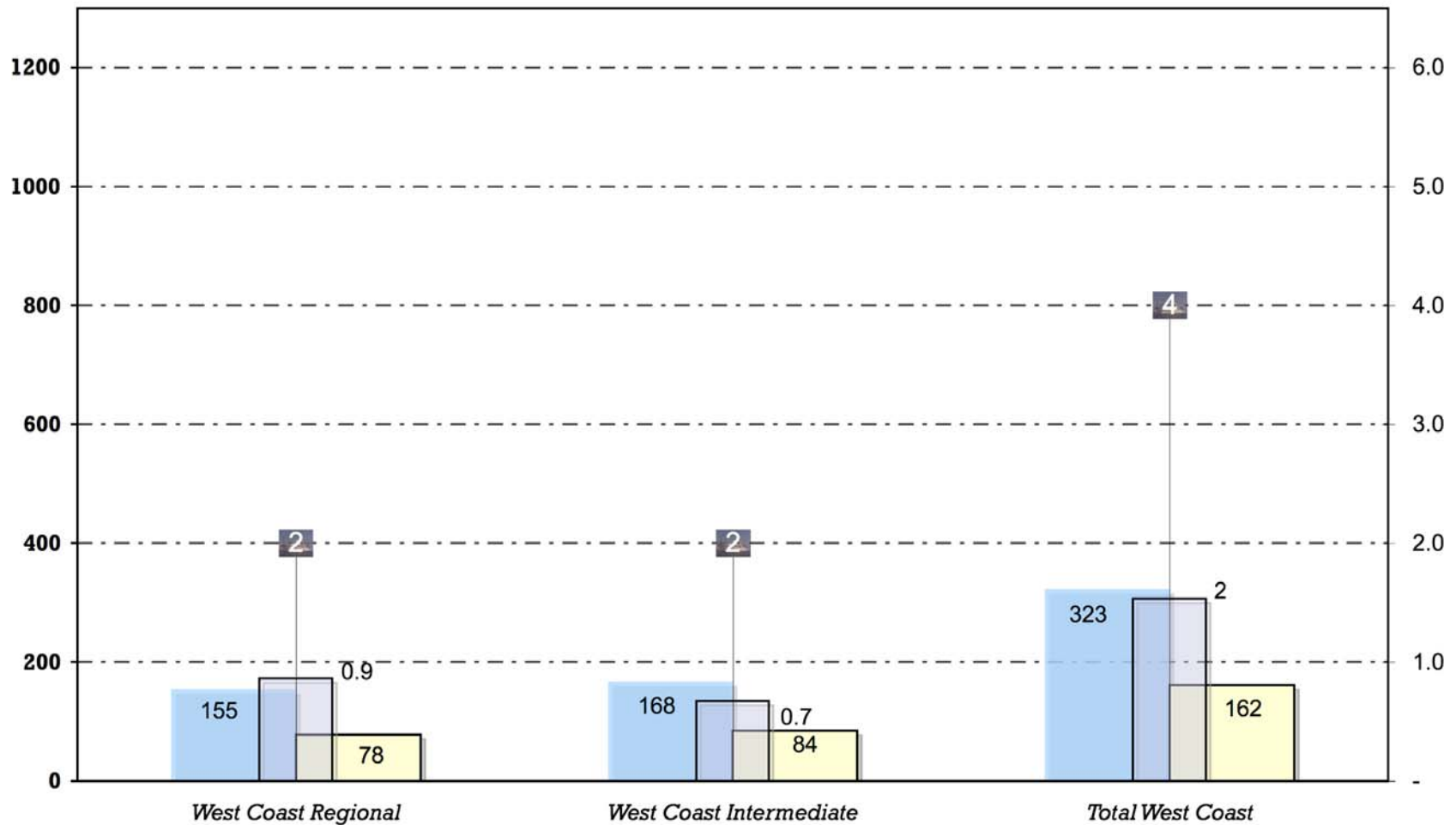
### 2008 Shiptime Requests per Vessel Class/Region

2008 Requested Days    Per Ship    # ship's work    # ships



### 2008 Shiptime Requests per Vessel Class/Region

2008 Requested Days    Per Ship    # ship's work    # ships





## Recommendation:

- Keep searching for “outside” sources of money and work. The large scale programs in the future will require the use of the UNOLS assets, but to bridge the gap during lean years, it also requires that the fleet consider ways to keep operational and economical.
- NDBC will have deployed most of their DART buoys. The remaining work will be turn arounds and maintenance. In order for UNOLS ships to be considered, flexibility and quick response, as demonstrated by East Coast vessels this past February, is essential.
- Lay-up considerations for 2008 need to be an early part of the scheduling process.
- Start working with one POC for large programs, such as BEST.

## Miscellaneous SSC Issues

- We would like to recommend a change in tenure of the SSC chair and vice chair to fall in line with RVOOC. It would be desirable to have the vice chair automatically rotate into the SSC chair position.

- Mapping tool that Department of States' Geographers recommends:

<http://www.vliz.be/vmdcdata/marbound/>

Reference book: Prescott and Schofield,  
Maritime Boundaries of the World, 2nd edition, \$213  
on Amazon.