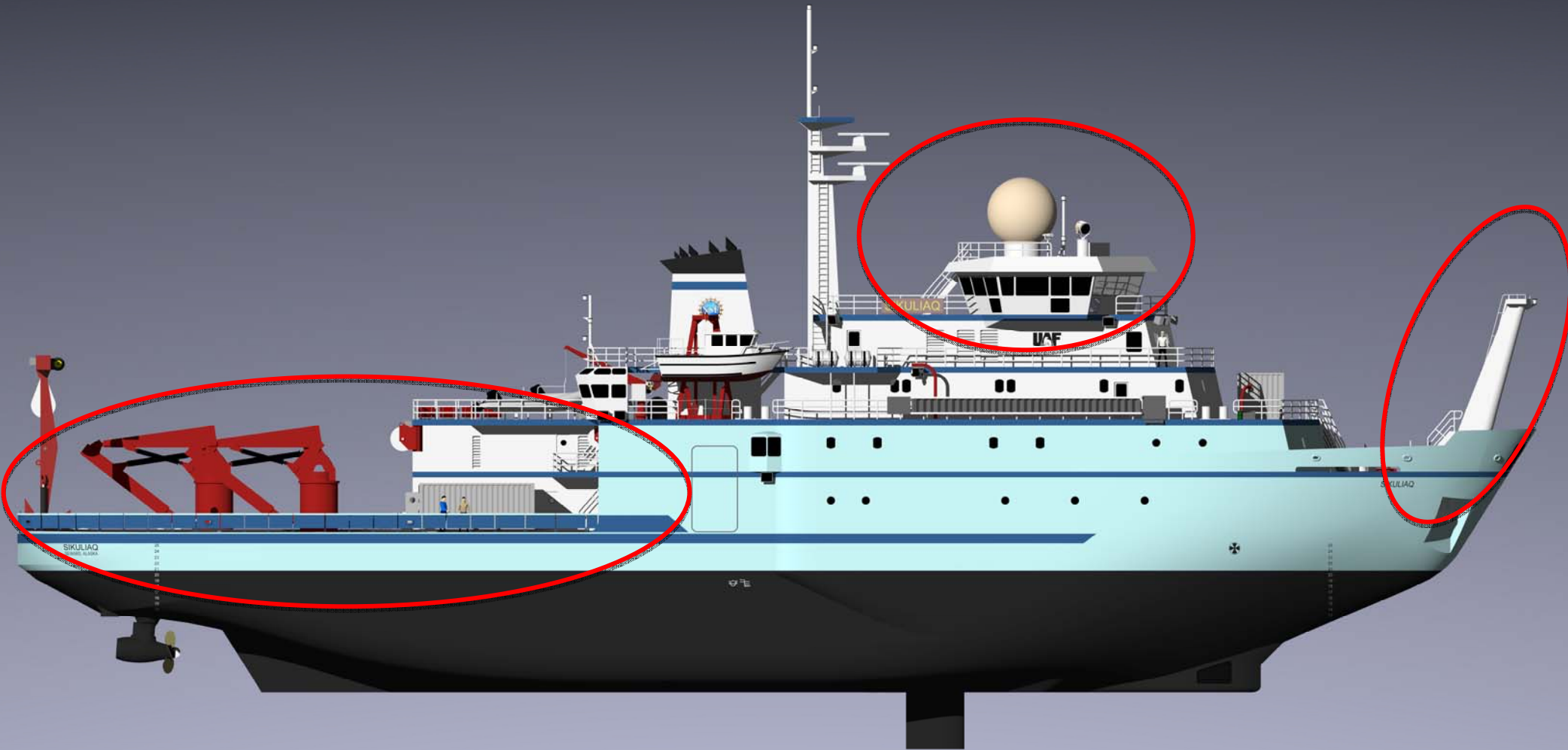


# RVOC Annual Meeting 2011

## R/V SIKULIAQ Status



RESEARCH VESSEL SIKULIAQ

# Project Execution

- Four phase project (2007 to 2014)
  - Phase 1 Design refresh (completed)
  - Phase 2 Shipyard contracting (completed)
  - **Phase 3 Shipyard construction (current phase)**
  - Phase 4 Post-delivery testing
- Funding is a combination of ARRA (stimulus) and MREFC funds



UNIVERSITY OF ALASKA FAIRBANKS

*America's Arctic University*

# Marinette Marine Corporation



UNIVERSITY OF ALASKA FAIRBANKS

*America's Arctic University*

# Project's Shipyard Office



UNIVERSITY OF ALASKA FAIRBANKS

*America's Arctic University*

# 11 April Keel Laying Ceremony



UNIVERSITY OF ALASKA FAIRBANKS

*America's Arctic University*



Faces in the crowd



UNIVERSITY OF ALASKA FAIRBANKS

*America's Arctic University*

**GROUP DEFINITIONS**

- G80 - 881 (MAST)
- G70 - 871 THRU 879 (ALL MODS ABV 02 LVL EXCEPT 881)
- G60 - 861, 862, 863, & 864
- G50 - 851, 852, 853, 854, 855, & 856
- G40A - 841, 842, 843, 844, & 845
- G40B - 846, 847, 848
- G30A - 831, 832, 833, 834, & 839
- G30B - 835, 836, 837, 838
- G20A - 821, 822, & 823
- G20B - 824 & 825
- G10 - 811 & 812

# ARRV MODULE STATUS

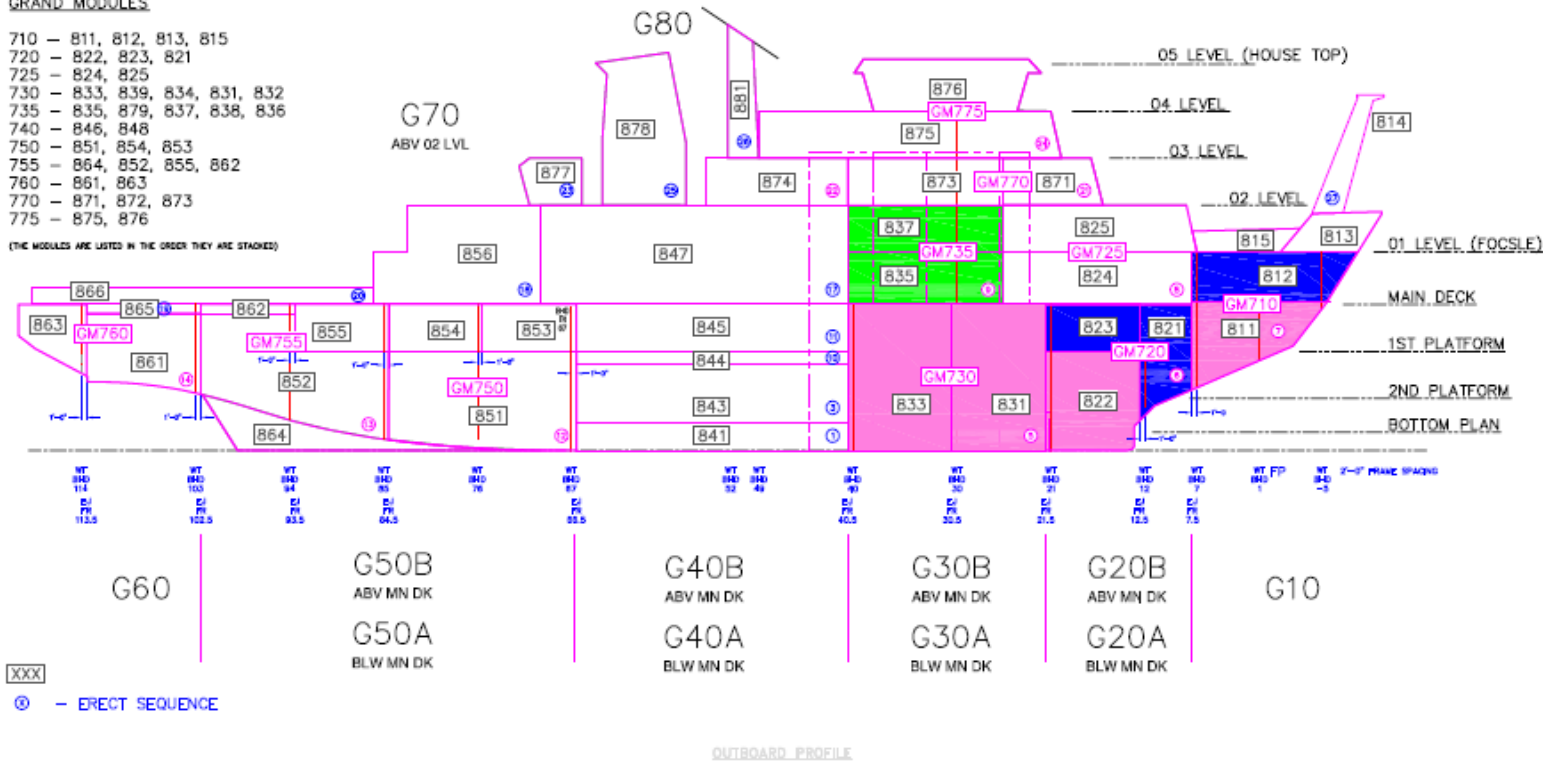
THIS DRAWING IS A PRODUCTION CONTROL DEPARTMENT STATUSING TOOL  
IT IS FOR REFERENCE ONLY

Status as of 22 April 2011

**GRAND MODULES**

- 710 - 811, 812, 813, 815
- 720 - 822, 823, 821
- 725 - 824, 825
- 730 - 833, 839, 834, 831, 832
- 735 - 835, 879, 837, 838, 836
- 740 - 846, 848
- 750 - 851, 854, 853
- 755 - 864, 852, 855, 862
- 760 - 861, 863
- 770 - 871, 872, 873
- 775 - 875, 876

(THE MODULES ARE LISTED IN THE ORDER THEY ARE STACKED)



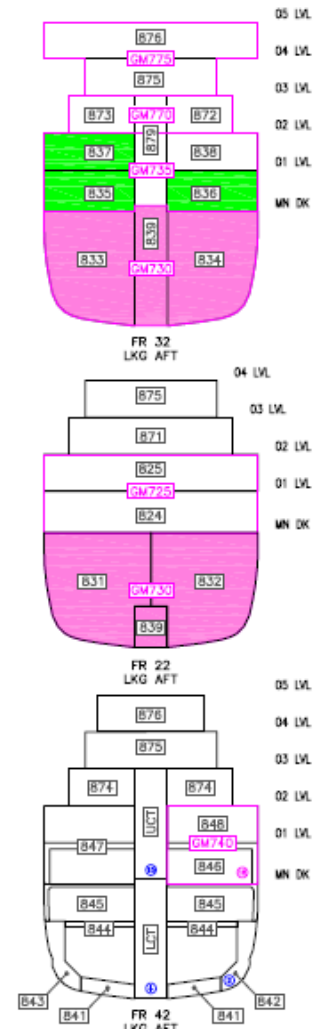
XXX - ERECT SEQUENCE

OUTBOARD PROFILE



FOR REFERENCE ONLY

M:\Module Breakdown Status & Zone ARR\ARR ModBreakdownStatus.dwg  
04-21-2011



MARINETTE MARINE CORPORATION A PINGATECH COMPANY		
ALASKA REGION RESEARCH VESSEL MODULE STATUS		
Drawn by	Date	Checked by Date
State	None	Approved by Date
Scale	None	None
Sheet	ARRV-MOD-SK2	Sheet 1 of 1



UNIVERSITY OF ALASKA FAIRBANKS

America's Arctic University

# Area of the forward transducers where the blister will go



UNIVERSITY OF ALASKA FAIRBANKS

*America's Arctic University*



# Bow and Ice Knife Modules



UNIVERSITY OF ALASKA FAIRBANKS

*America's Arctic University*

## Bow section with stem bar in place



UNIVERSITY OF ALASKA FAIRBANKS

*America's Arctic University*



# Mockups

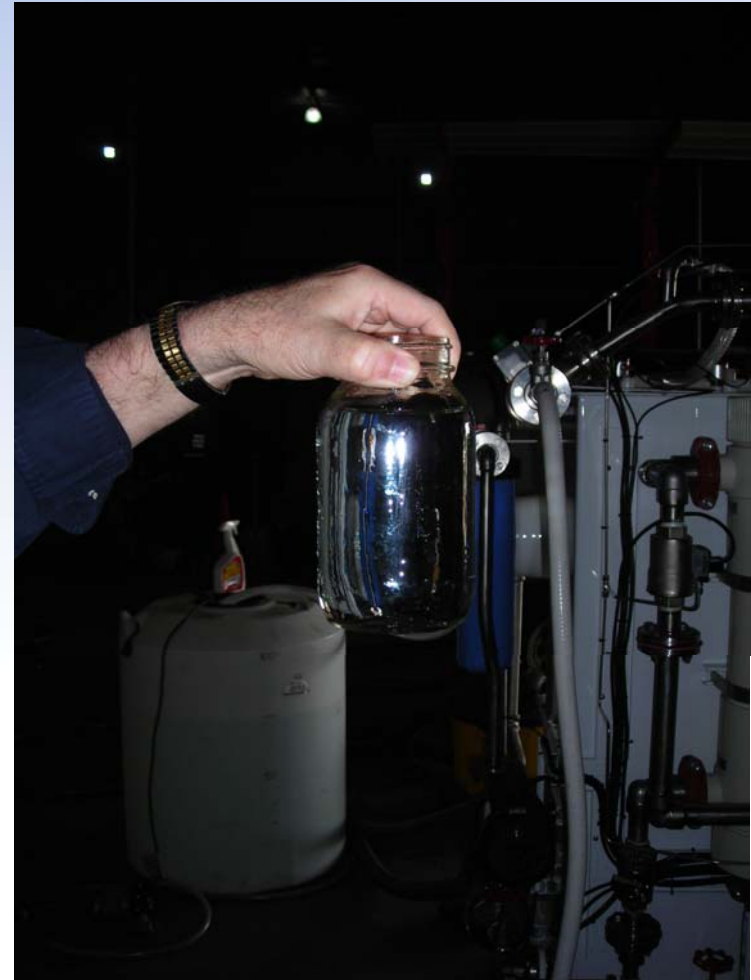


UNIVERSITY OF ALASKA FAIRBANKS  
*America's Arctic University*

# Act2 Technologies zero discharge MSD system



Before



After



La Machine

[www.act2tech.org](http://www.act2tech.org)



UNIVERSITY OF ALASKA FAIRBANKS

*America's Arctic University*

# Anticipated Schedule

Contract Signing Ceremony	February 2010
Design Verification and Transfer	January to September 2010
Start Fabrication	January 2011
Keel Laying	11 April 2011
Z-drives Delivered to Shipyard	December 2011
Launch	June 2012
Builder's Trials	November 2012/April 2013
Acceptance Trials	May 2013
Delivery	June 2013
Post Delivery Dockside/Training	July/August 2013
Transit and Science Trials	August to November 2013
NSF Inspection	December 2013
Start funded science	January 2014
Ice Trials	April 2014
Dry-dock	May 2014



UNIVERSITY OF ALASKA FAIRBANKS

*America's Arctic University*

# Planning for Science in 2014

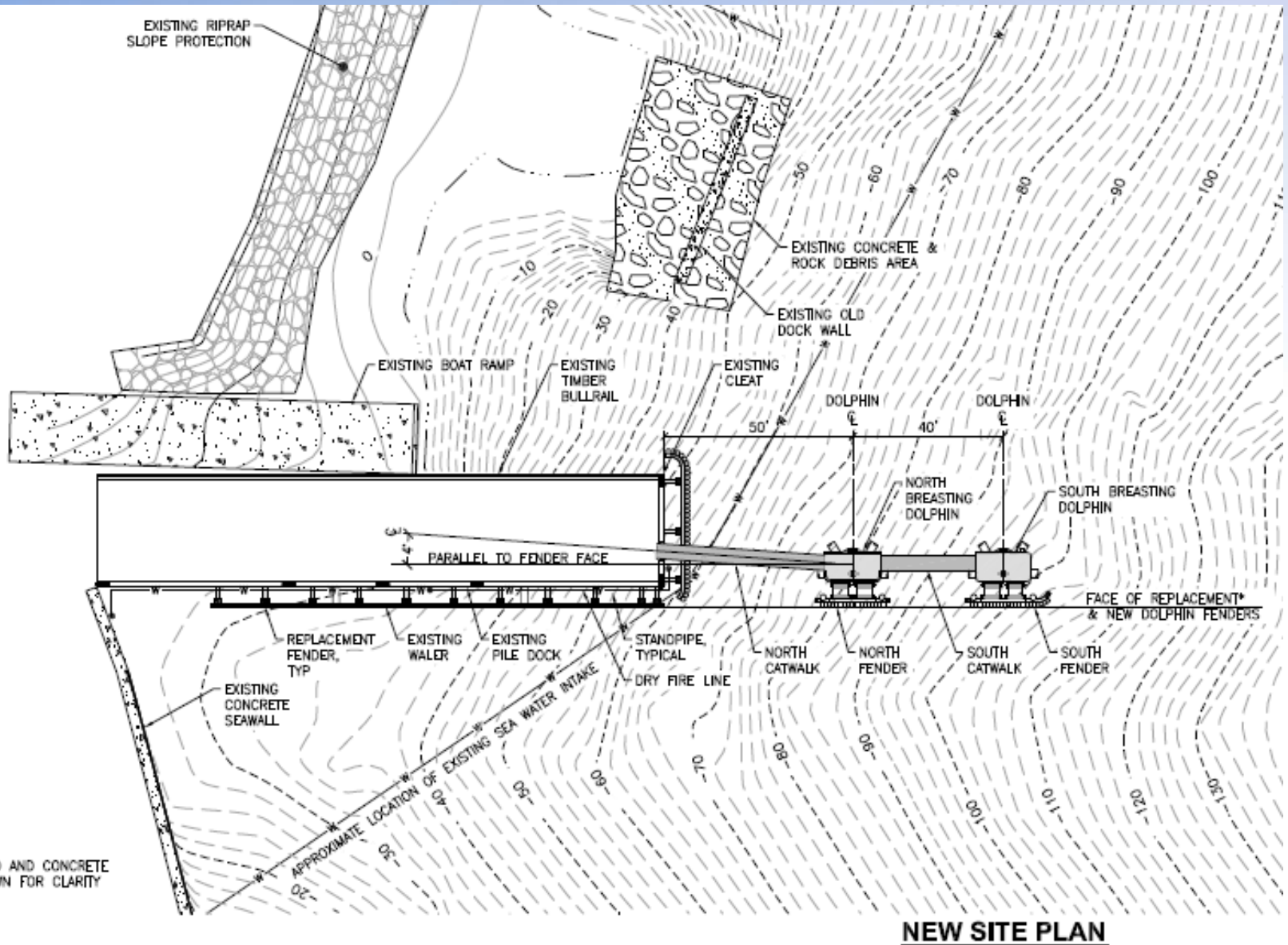
- UAF will hold two science planning workshops
  - 10-11 May 2011 in Marinette, WI
  - February 2012 at the Oceans 2012 Meeting
- Target is polar research scientists and funding agency managers
- Awareness of SIKULIAQ capabilities, spark proposal development
- Science not restricted to any particular region



UNIVERSITY OF ALASKA FAIRBANKS

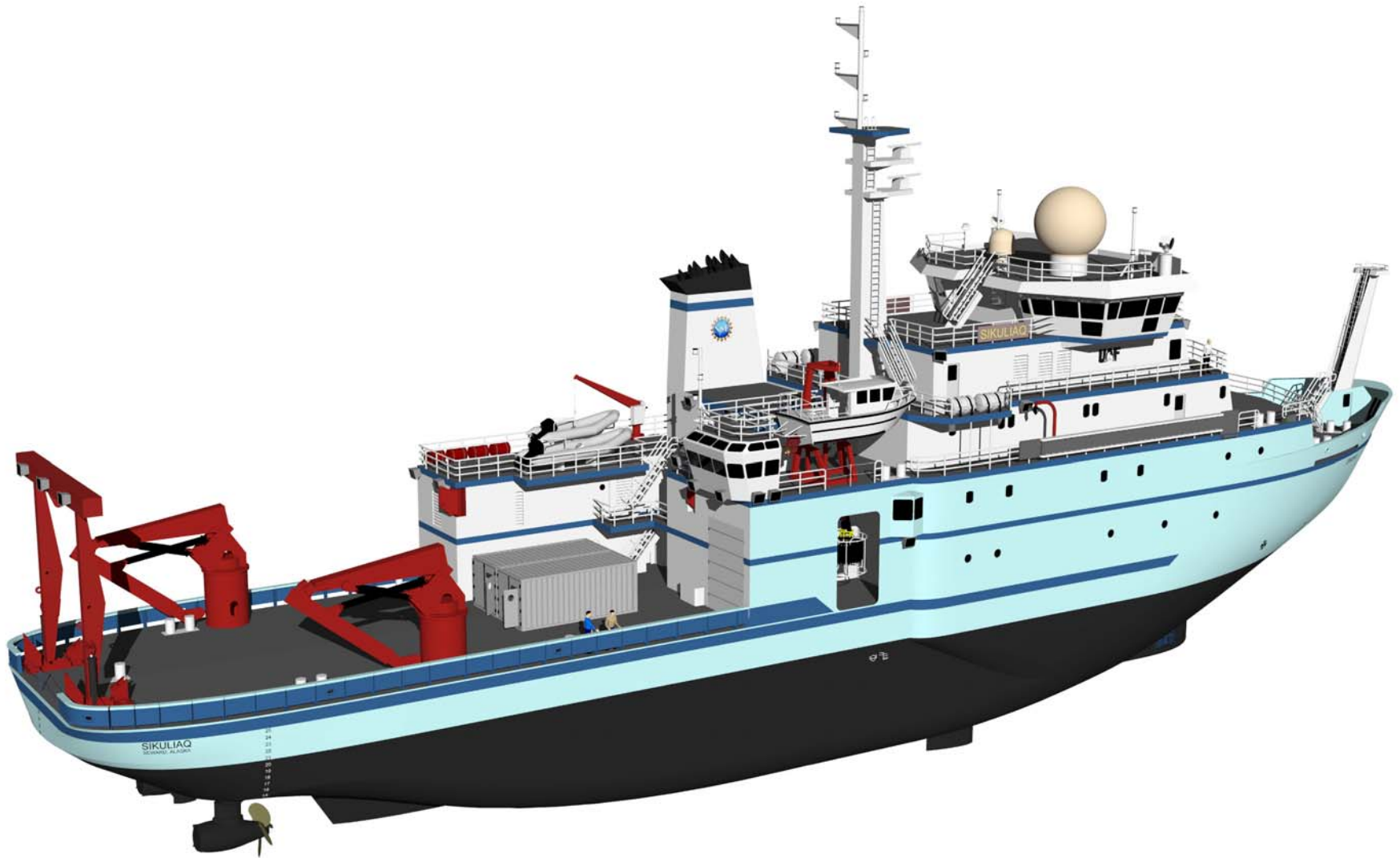
*America's Arctic University*

# SMC Pier Upgrade



UNIVERSITY OF ALASKA FAIRBANKS

*America's Arctic University*



UNIVERSITY OF ALASKA FAIRBANKS

*America's Arctic University*