

Ocean Bottom Seismograph Instrument Pool

Brent Evers

Incorporated Research Institutions
for Seismology



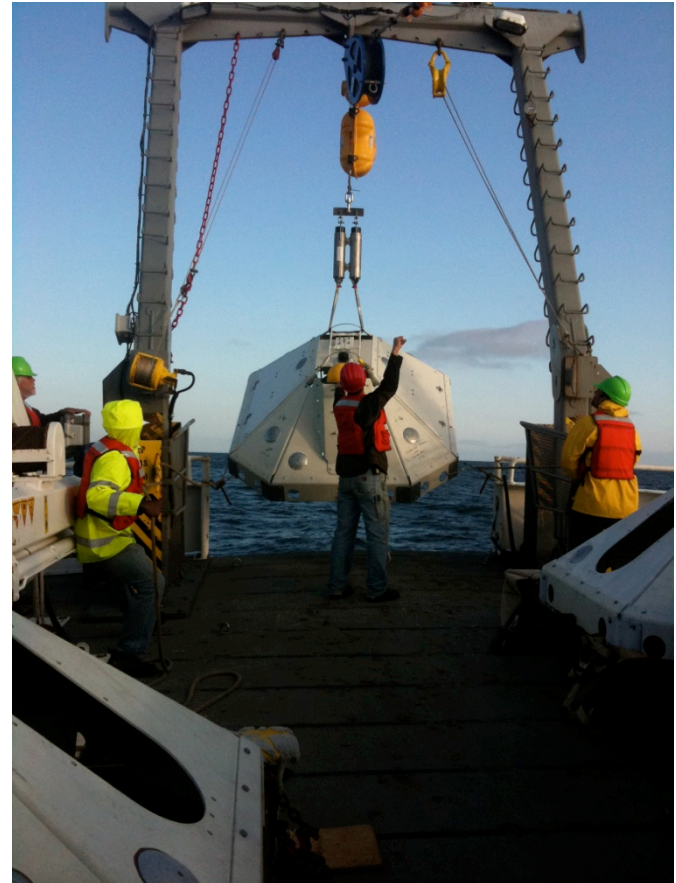
Agenda



- Overview
- Organization
- People
- Instruments
- Operations
- Data
- How to Propose

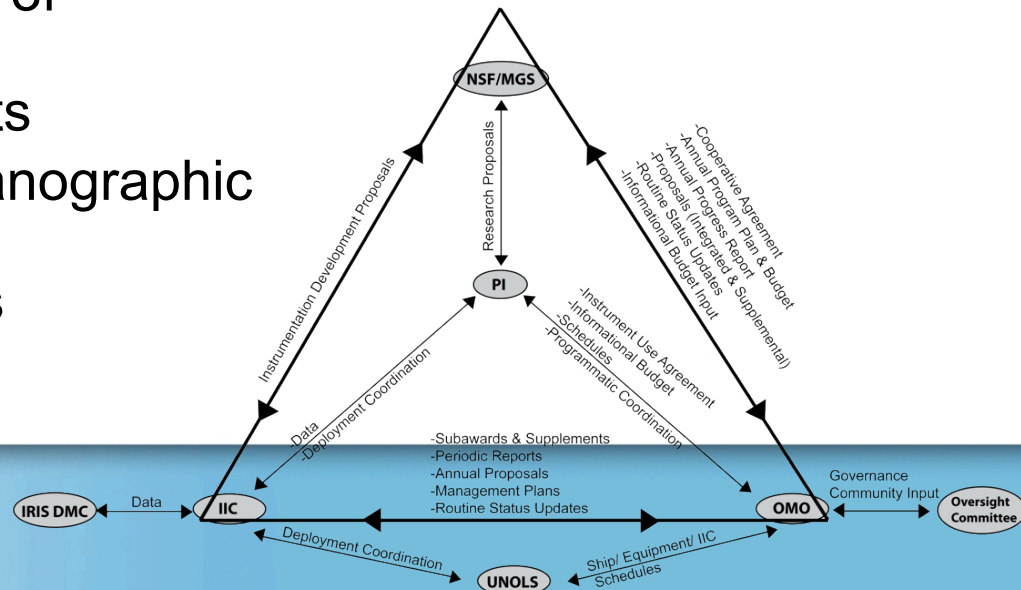
OBSIP - Overview

- Funded by National Science Foundation
- Guidance from Oversight Committee
- Managed by IRIS
 - OBSIP Management Office
- Operations and Instruments by IIC's
 - Lamont, Scripps, Woods Hole
- 253 Instruments
- In 2013, 11 cruises
- In 2014, 12 cruises
- www.obsip.org



OBSIP - Organization

- Oversight Committee
- OBSIP Management Office
- Institutional Instrument Contributors
 - Lamont-Doherty Earth Observatory
 - 60 instruments
 - Scripps Institution of Oceanography
 - 117 instruments
 - Woods Hole Oceanographic Institution
 - 76 instruments

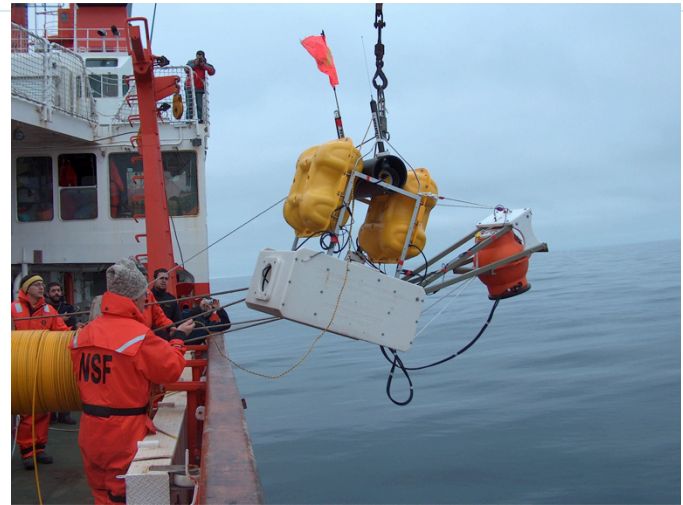


OBSIP – People

- NSF
 - Donna Blackman (Program Director), Rodey Batiza (Section Head)
- Oversight Committee
 - Don Forsyth (Chair)
 - Monica Kohler, Anne Trehu, Harm Van Avendonk, William Wilcock, 2 New - TBD
- OBSIP Management Office (OMO)
 - Brent Evers (Project Manger), Jessica Lodewyk (Data Quality Specialist)
- Institutional Instrument Contributors (IIC's)
 - LDEO
 - Andrew Barclay (Manager), Jim Gaherty, Maya Tolstoy
 - SIO
 - Jeff Babcock (Manager), John Orcutt
 - WHOI
 - John Collins (Manager), Dan McCorkle, Dan Lizaralde, Jeff McGuire
- Many More!! – Techs, engineers, support staff

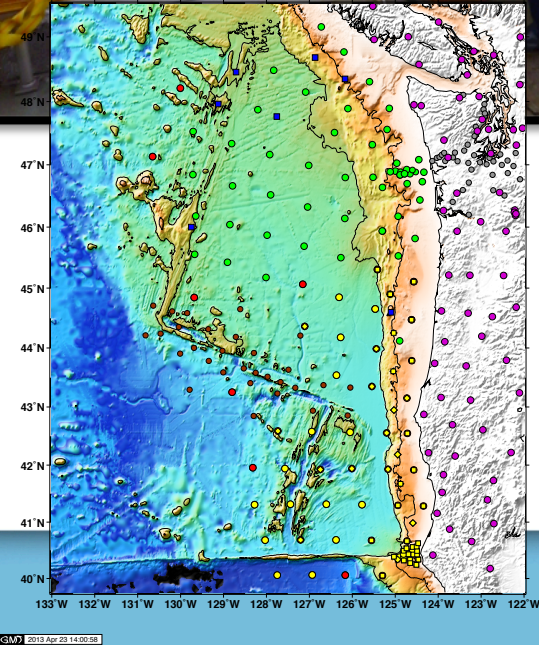
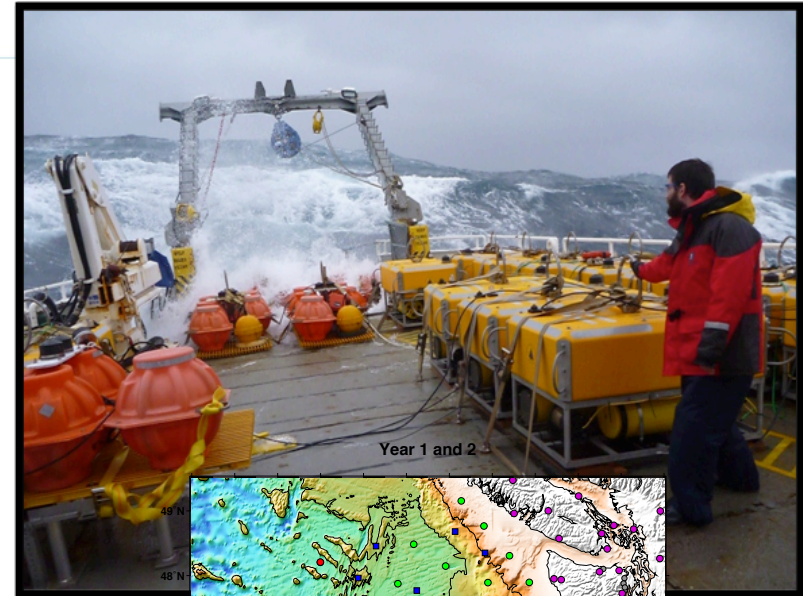
OBSIP Instruments

- Long Period (Broadband)
 - 160 instruments
 - Used for passive recording
 - Recording time of 1 year
- Short Period
 - 93 instruments
 - Used for active recording
 - Recording time of months
 - Often used in conjunction with seismic vessel Langseth



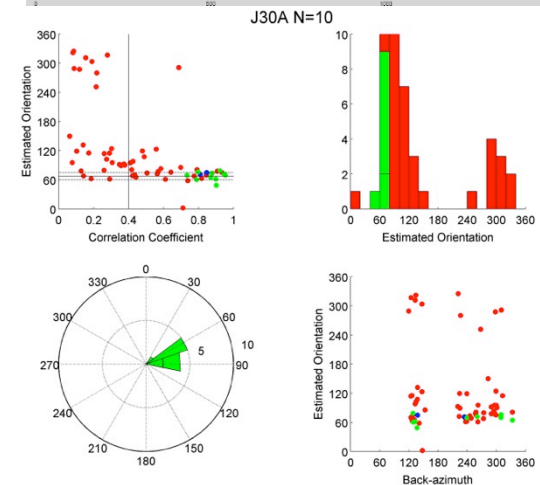
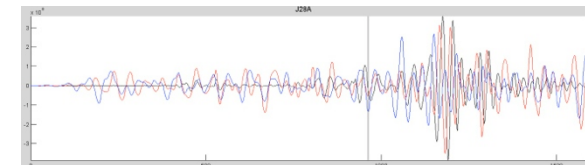
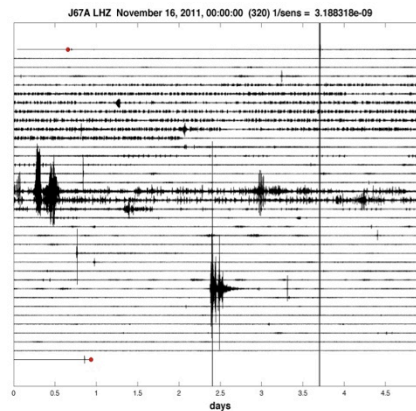
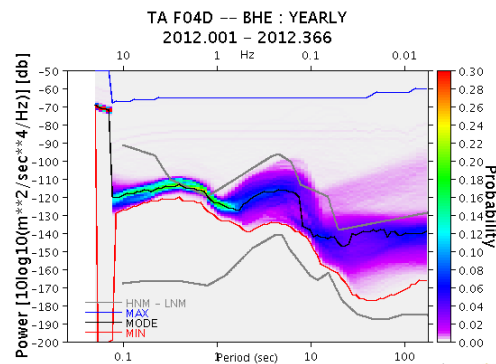
OBSIP Operations

- Principal Investigator Experiments
 - Run by a single scientist
 - Scientist has exclusive access to data for two years
- Community Experiments
 - Conceived, designed, and conducted by the community
 - Cascadia Project is first, current project
 - 70 OBS's
 - Complementary land seismometer component
 - 4 years of operations
 - Data available immediately



OBSIP Data

- Open to any user
- Available at the IRIS Data Management Center
 - <http://www.iris.edu/mda/OBSIP>



OBSIP – How to Propose

- Talk to cognizant NSF Program Director
 - Marine GEO, EAR, etc..
- Contact OMO if you:
 - Have questions
 - Have special requests – instrumentation, logistics
 - The sooner the better – things get busy at proposal time
- Make an instrument request
 - Plan your experiment first
 - OMO will provide an informational budget
- Make a ship time request
- Include the informational budget with your proposal to NSF
- Cross fingers
- Be ready to adapt

No. 13xx-name

OBSIP
U.S. National Ocean Bottom Seismic Instrumentation Pool

This is an informational budget provided to prospective users of instruments in the U.S. National Ocean Bottom Seismic Instrumentation Pool. The institutional instrument contributors (IICs) to the National Pool will provide complete engineering and technical support for OBS operations at sea. The cost of providing this support (e.g., instrument charges, personnel support, shipping and travel) will be funded directly through the Pool; these costs do not need to be included in individual science proposals. NSF does, however, require PIs to provide an informational budget estimating these costs in any proposal requesting OBSIP instruments. For more information on OBSIP, see <http://www.obsip.org>.

Project title: *Active-Passive Survey of Loihi Seamount*

Principal Investigator(s): *John Q. Public*
 Funding Agency: *NSF*
 Submission deadline: *August 15, 2012*
 Instruments: *10 SP OBS 4-component; 30 deployments, 20 instruments* *10 BBOBS 4-component;*
 Date of prop. experiment: *June 2013-June 2014*
 Logistics: *One 15-day leg and one 5-day leg*
 Ports: *Honolulu to Honolulu, HI*

The following is an estimate of the cost of supporting the OBS operations requested in this proposal. These costs are subject to change depending on the scheduling of this project, the length and ports of the deployment and recovery legs, and the OBSIP institution that supports this project. A final budget for OBS support operations for this project will be negotiated as part of the annual cooperative agreement between NSF and the Pool IICs.

OBS Instrument drop charge:	6,154 per instrument*	184,616
<small>(includes batteries, deployment and, if applicable, redeployment costs)</small>		
OBS engineering and technical support cost:		165,154
<small>(on shore and at sea)</small>		
Shipping:		67,592
Travel:		35,433
Estimated total:		\$452,796

* Varies from proposal to proposal based on the mix of instrument types and deployment lengths.
 Notes:

OBSIP Management Office
 August 1, 2012

OBSIP More Information

- www.obsip.org
 - OBSIP Information
 - News
 - Funding Opportunities
 - Webinars
 - How to plan experiments
 - Contacts
 - Past experiment information
 - Instrument details
 - Experiment planning info
 - Instrument request forms
 - Cruise and data evaluations
 - Instrument Use Policies and Procedures
 - Data Information
 - Virtual network info
 - Access methods



OBSIP – Thank you!

- Contact:
 - Brent Evers
 - brent.evers@iris.edu
 - 202-682-2220x156
- www.obsip.org

