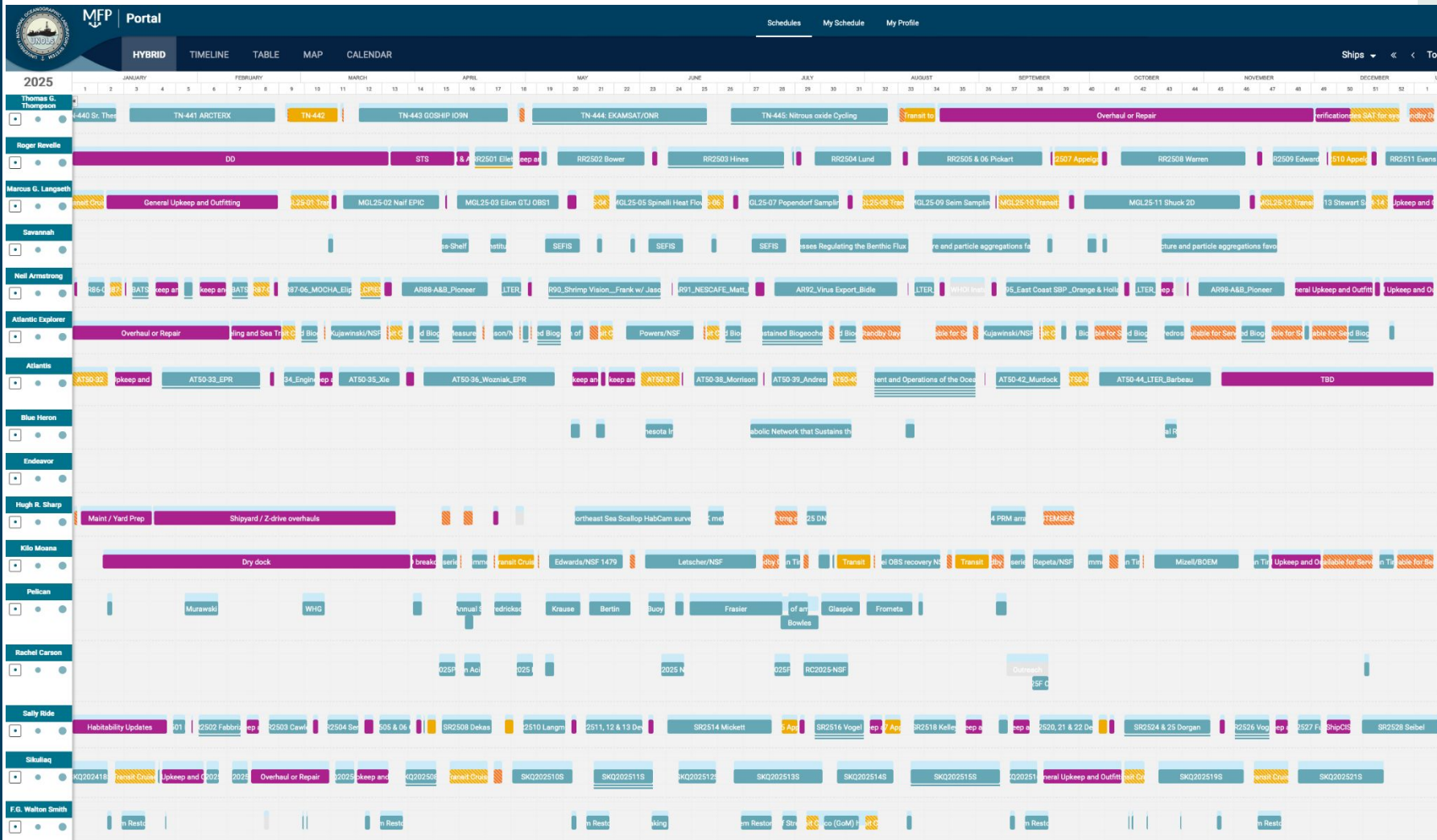


2024 Operations & 2025 Fleet Scheduling Projection

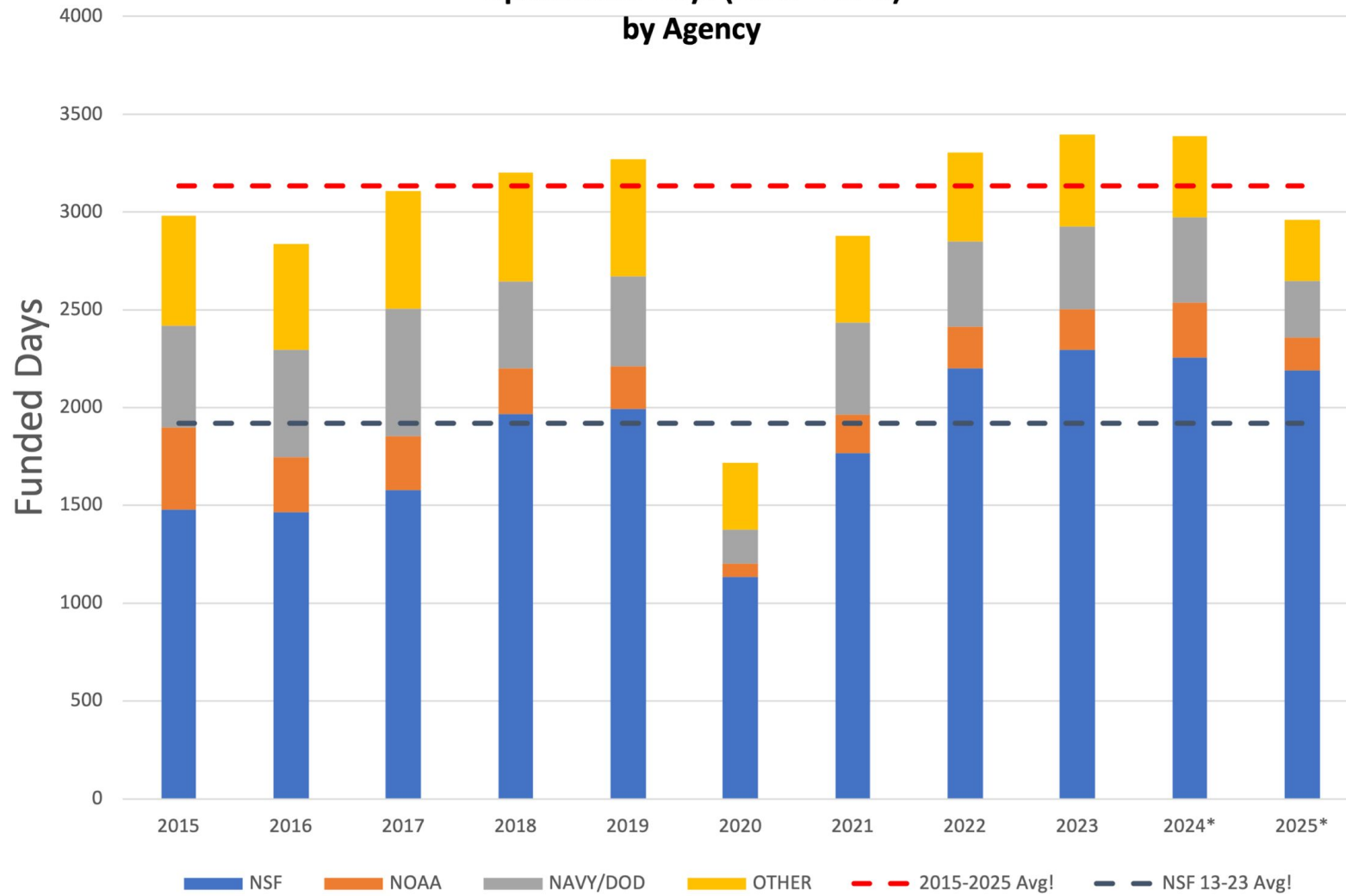
Doug Russell/UNOLS Office



20 November 2024



US Academic Research Fleet Operational Days (2015 - 2025) by Agency

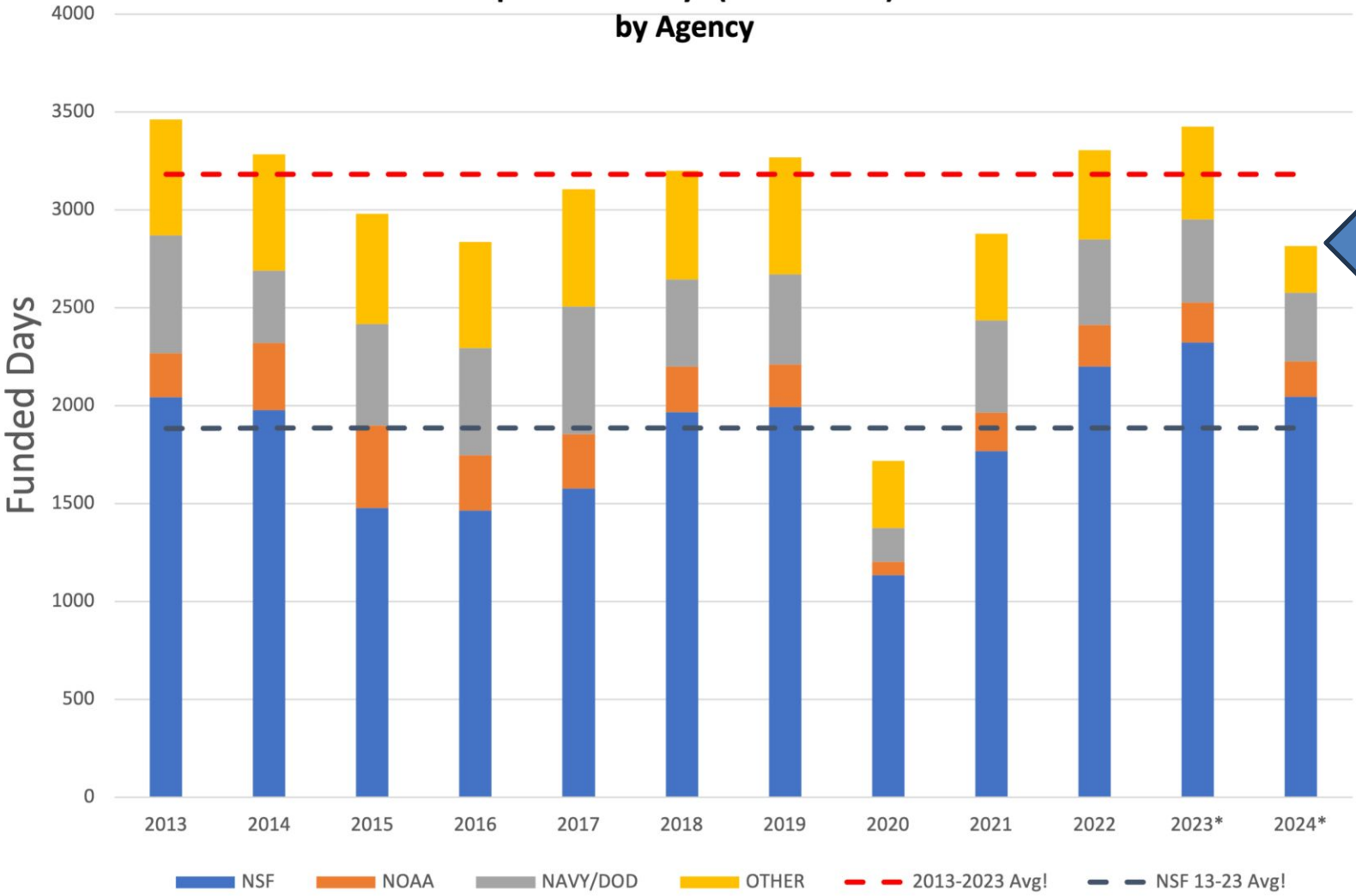


*Provisional

^Projected - ^Includes both Published and Draft schedules. Draft schedules include all Funded + 30% Pending days

! 10yr Avgs do not include 2020 (COVID-19)

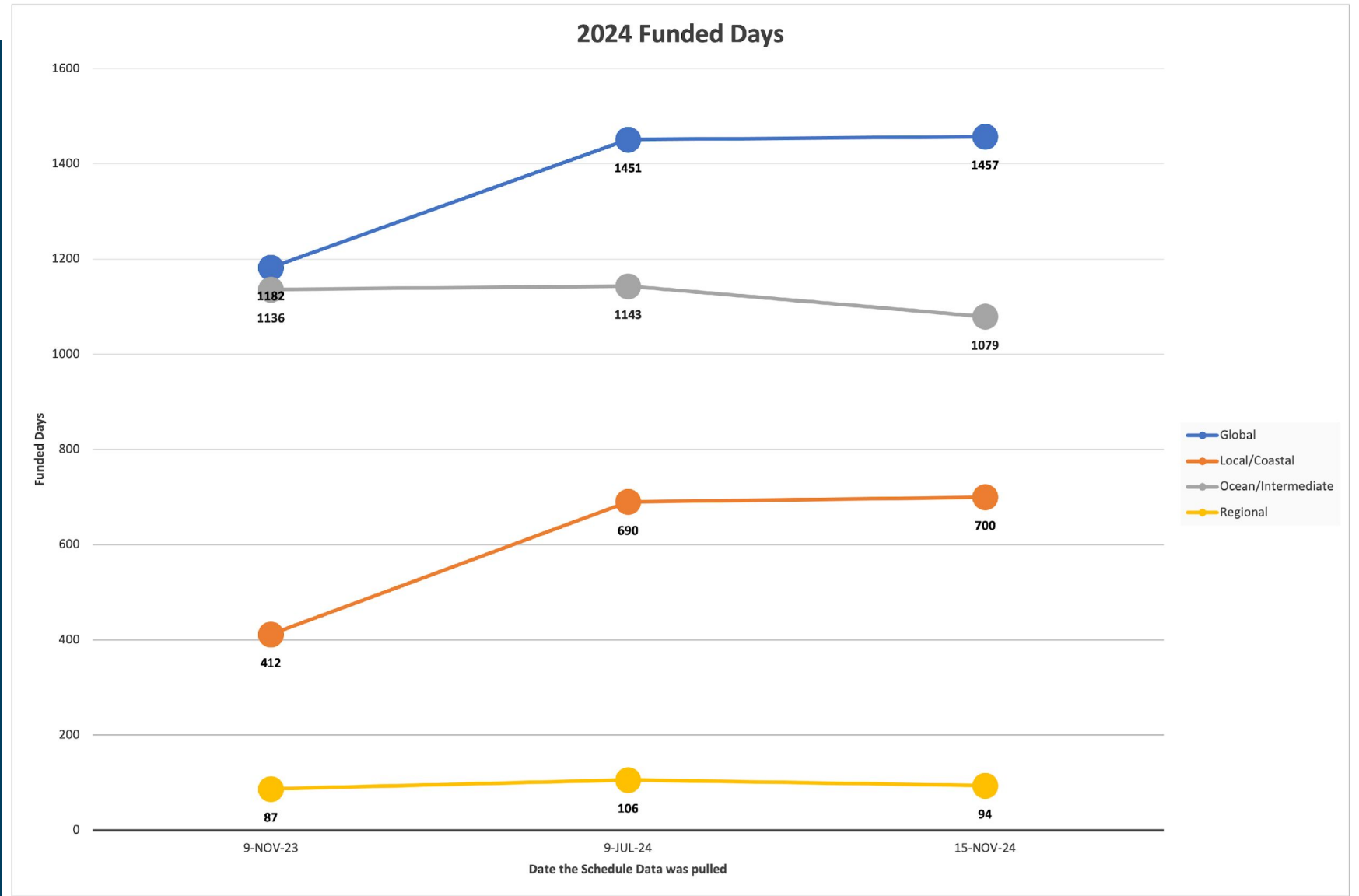
US Academic Research Fleet Operational Days (2013 - 2024) by Agency



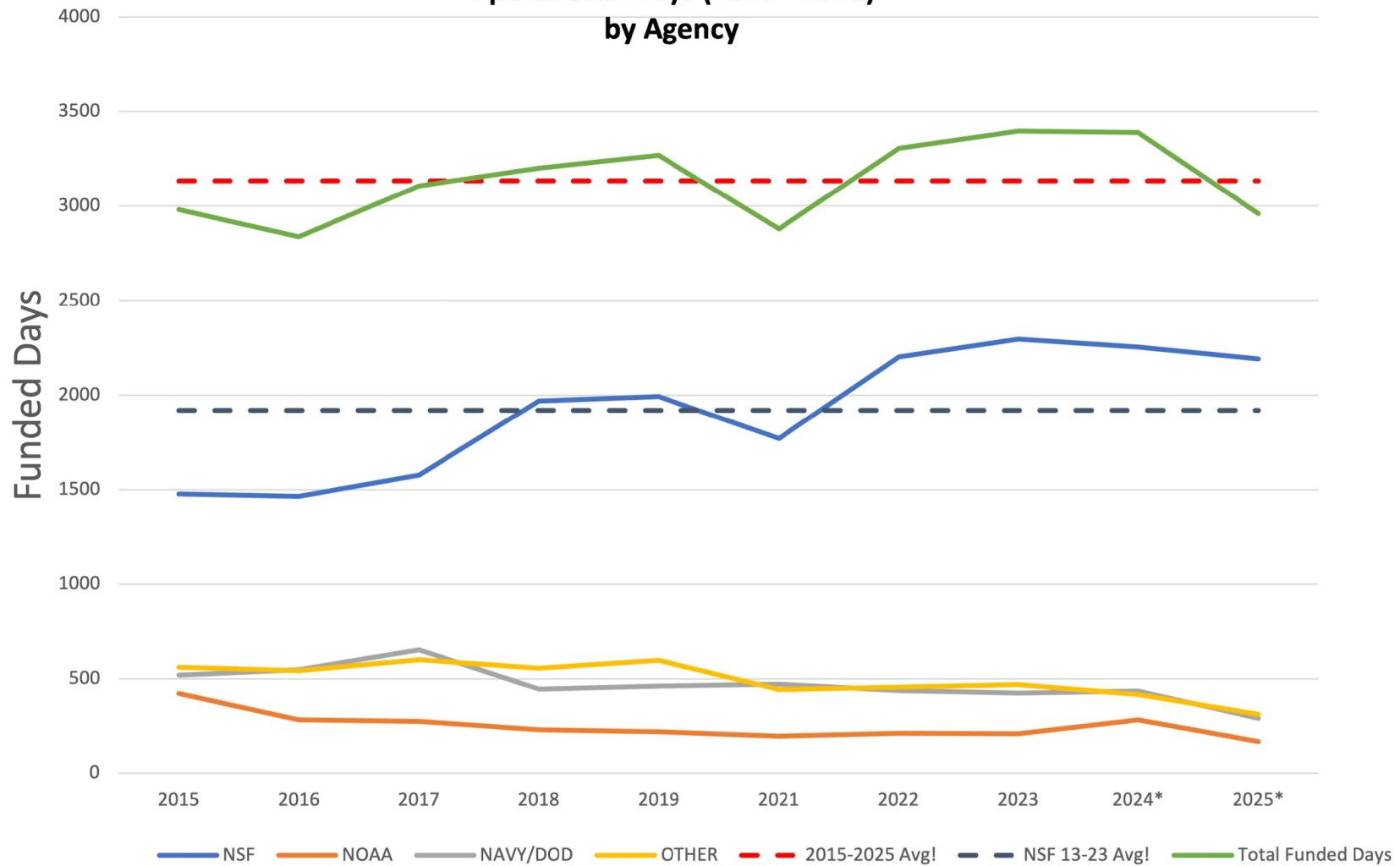
*Provisional
 ^Projected - Funded + 30% Pending
 ! 10yr Avgs do not include 2020 (COVID-19)

2023 Annual Meeting Update

How days scheduled adjust over time

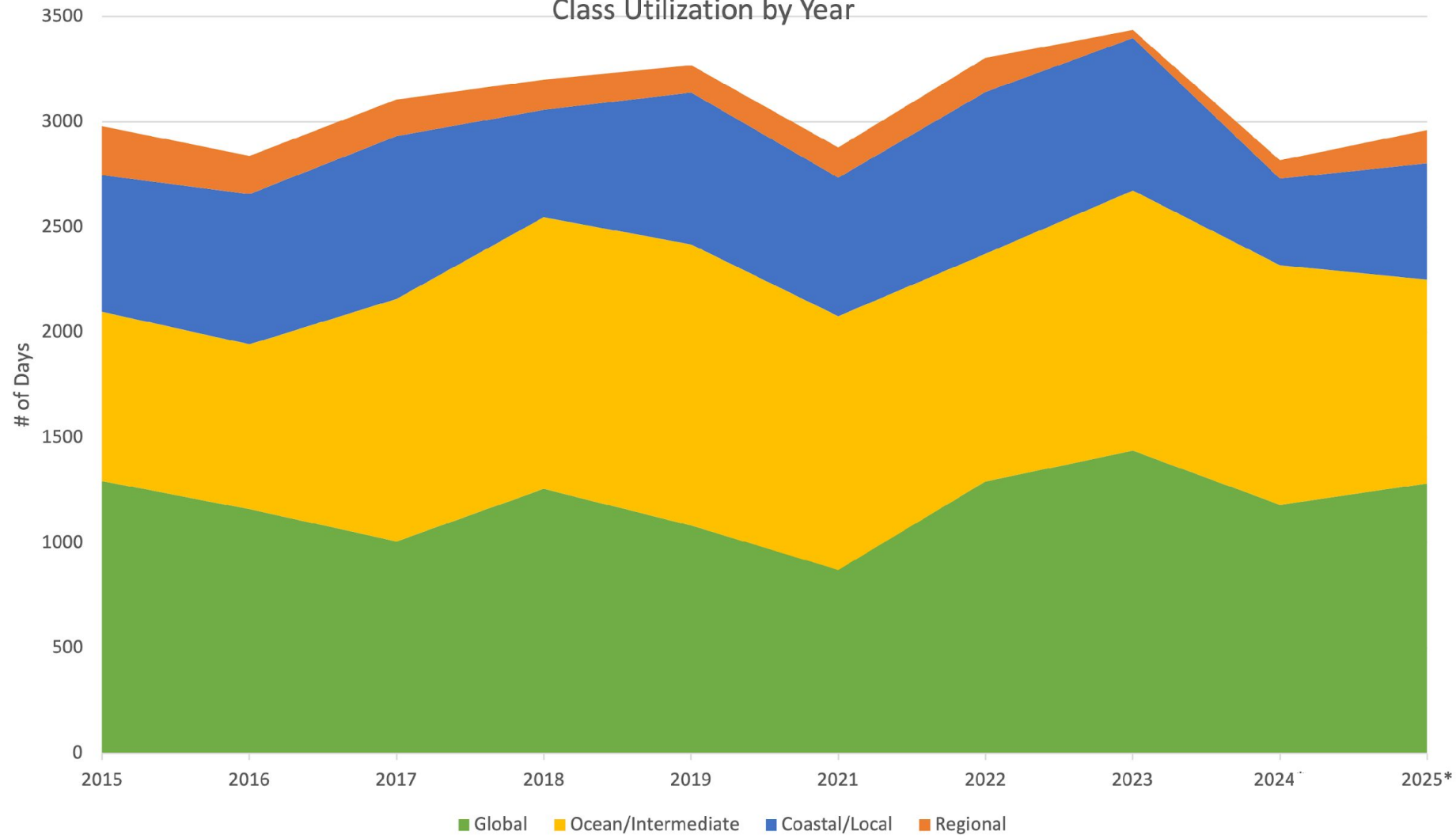


US Academic Research Fleet Operational Days (2015 - 2025) by Agency

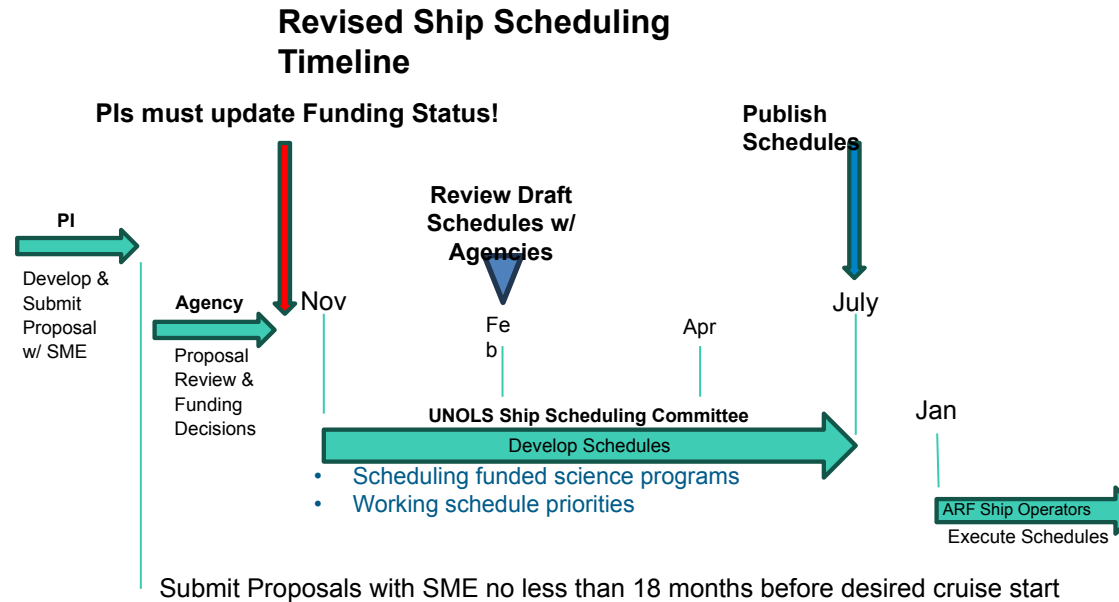


*Provisional

US Academic Research Fleet Class Utilization by Year



Amended Ship Scheduling Process



SME – Shiptime & Marine Equipment request, submitted via UNOLS Marine Facilities Planning
<https://mfp.us>

Implemented for 2026 Ship Scheduling
 Global / Ocean Classes