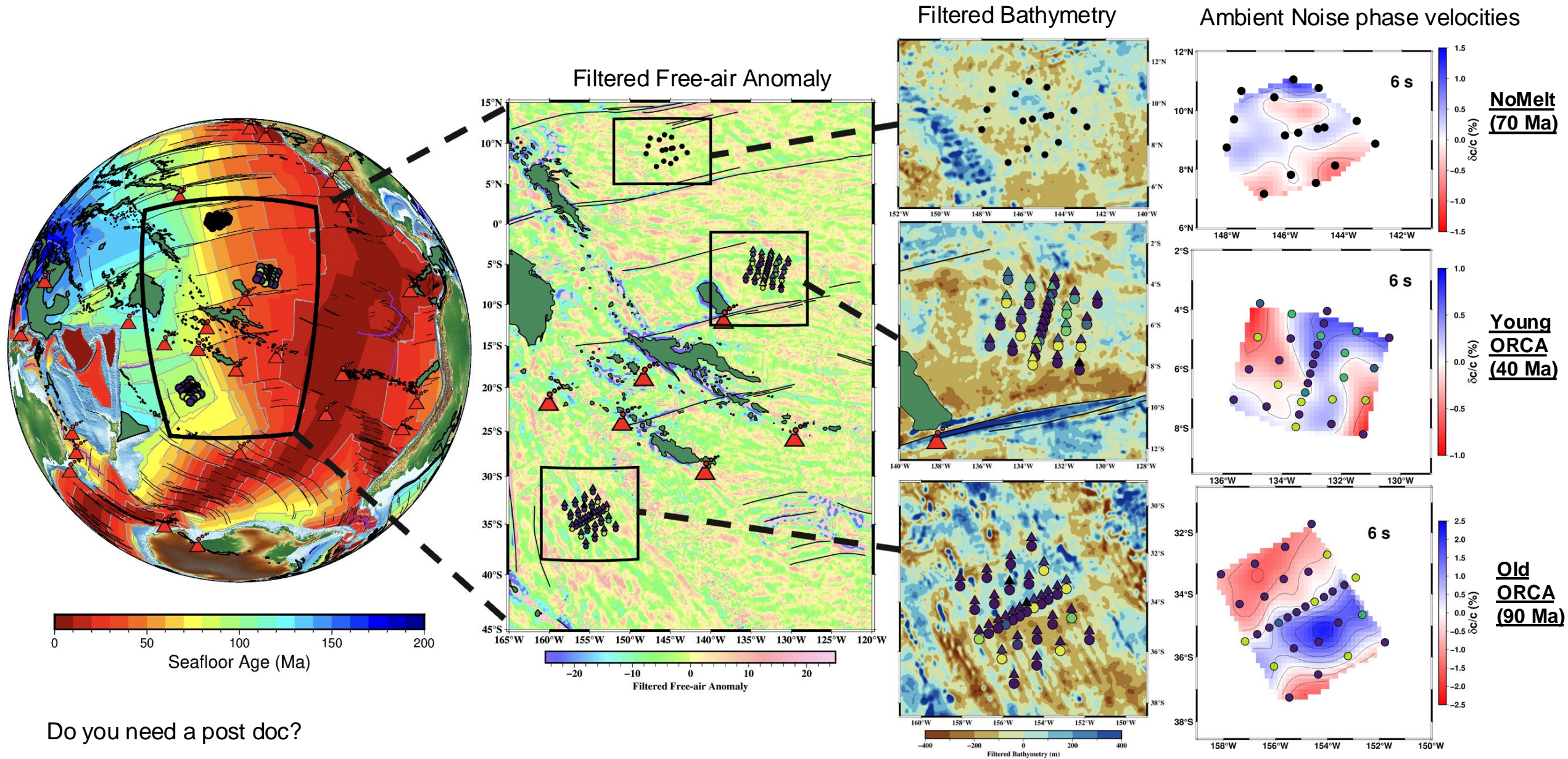


# Oceanic Crustal Thickness Variation Revealed by Joint Gravity and Seismic Inversions Across the Pacific

Joseph H. Phillips<sup>1\*</sup>, James B. Gaherty<sup>1</sup>, Joshua B. Russell<sup>2</sup>, Zachary C. Eilon<sup>3</sup>, Donald W. Forsyth<sup>2</sup>, and Joseph S. Byrnes<sup>1</sup>  
Northern Arizona University, AZ<sup>1</sup> Brown University, RI<sup>2</sup> University of California Santa Barbara, CA<sup>3</sup> \*jp2888@nau.edu



Do you need a post doc?



