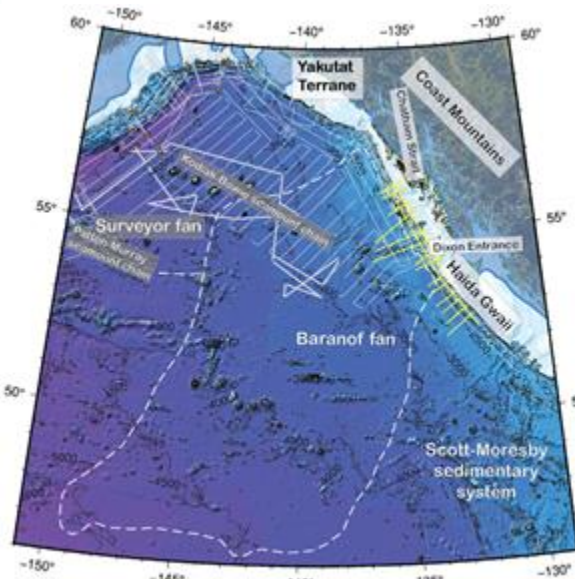
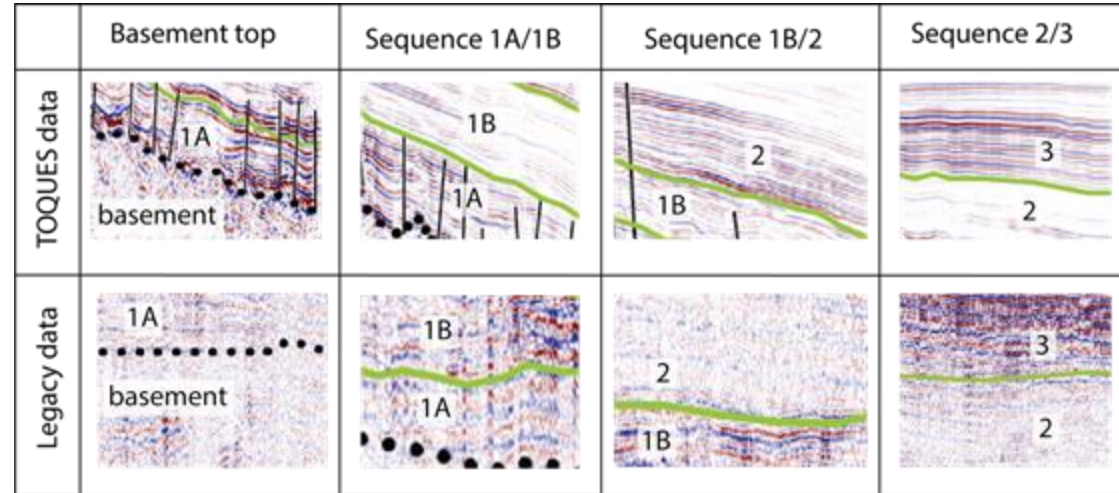
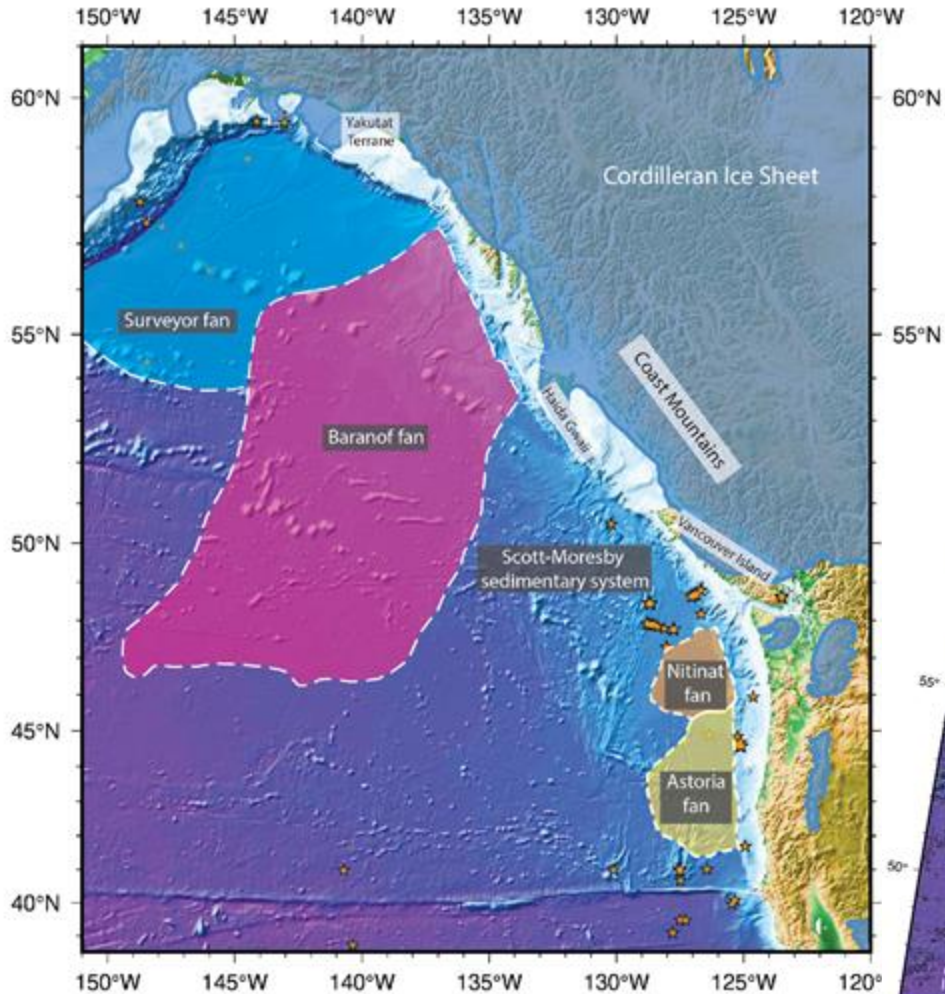


# Baranof fan: the sediment archive of the thickest and longest lasting Cordilleran Ice Sheet

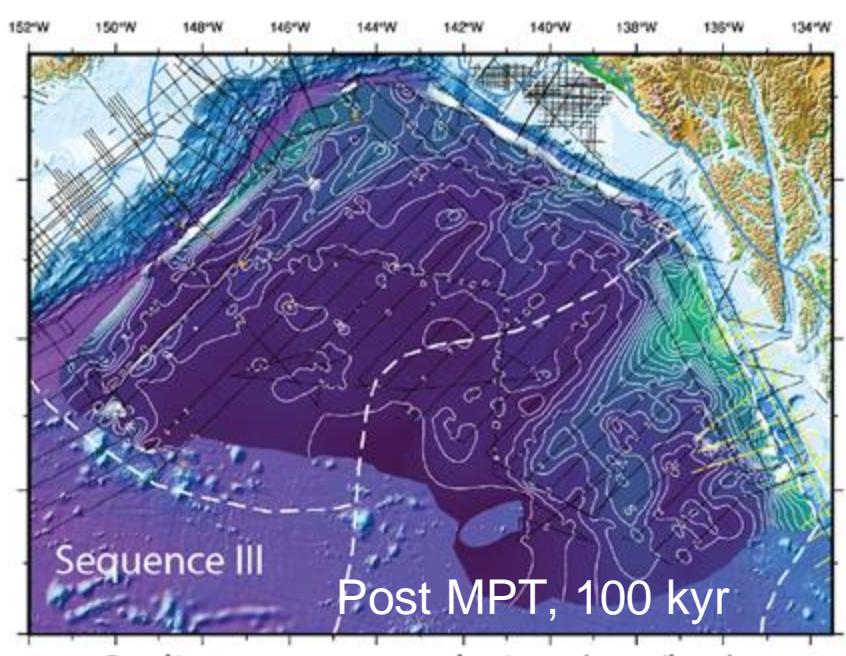
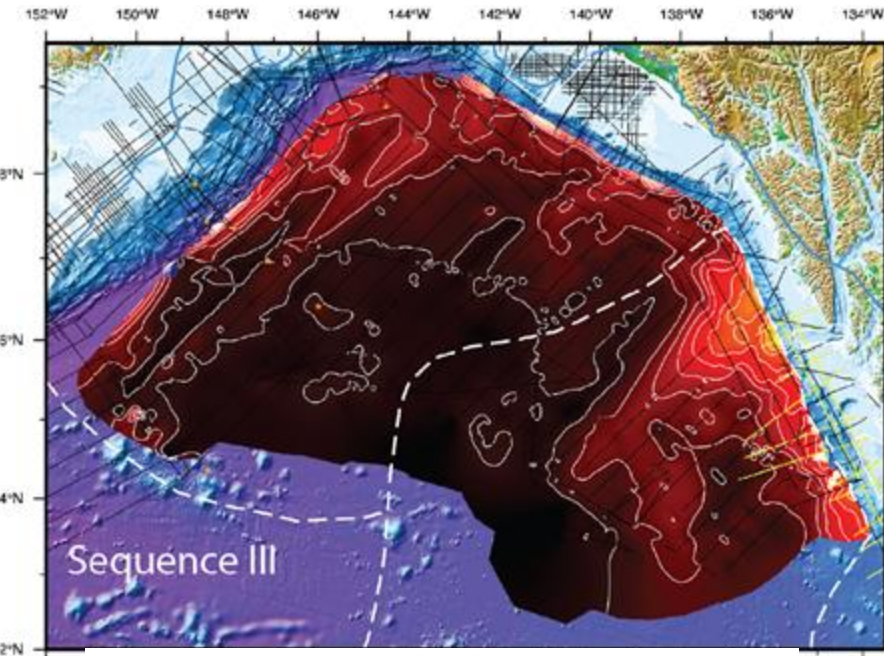
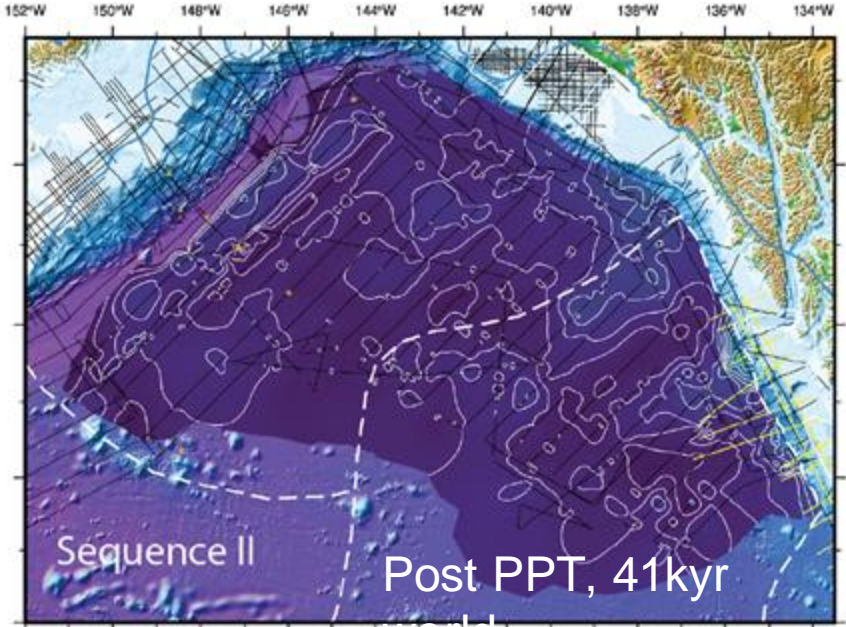
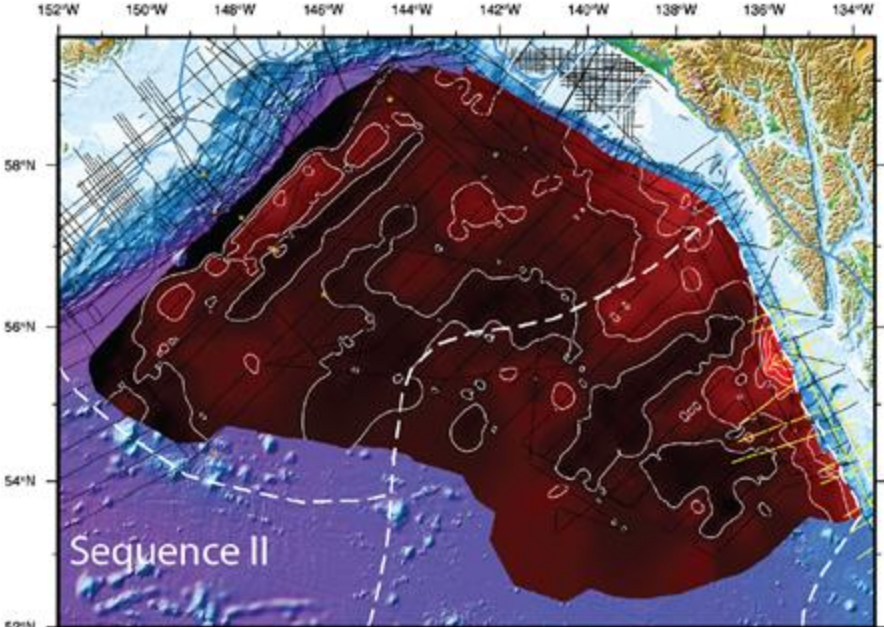


Age dated sequence boundaries and new, high resolution reflection data from the 2021 TOQUES survey allow us to resolve sediment volumes and accumulation rates from PPT-MPT, and MPT-present.

Sarah Rysanek, [srysanek@unm.edu](mailto:srysanek@unm.edu)



# Sediment volumes and accumulations



	max rate	total area non-zero average	total volume	max thickness
II	111	24	87,593	1.8
III	238	42	111,806	2.9

Baranof fan has high sediment accumulation rates without sourcing from a tectonically active area.

Sediment thickness (twtt)



Sediment accumulation (cm/kyr)

