

2024 Early Career Chief Scientist Workshop & Training Cruise

Funded by NSF (RMs Frank Rack, Lisa Rom) and supported by the Coast Guard and NOAA

PIs Emily Eidam, Laurie Juranek (OSU)



Built on successful 2023 effort

Advertised through multiple channels

Application period late Jan-mid Feb

67 Applicants from 47 universities and institutions (1-2 applicants from most, 8 from UW and 4 from UAF)

Scored based on:

- Previous sea experience
- Grant eligibility/likelihood of applying
- Vested polar research interest
- Tractable science goals/interests
- Strong interest in professional development (leadership training opportunity)

Built on successful 2023 effort

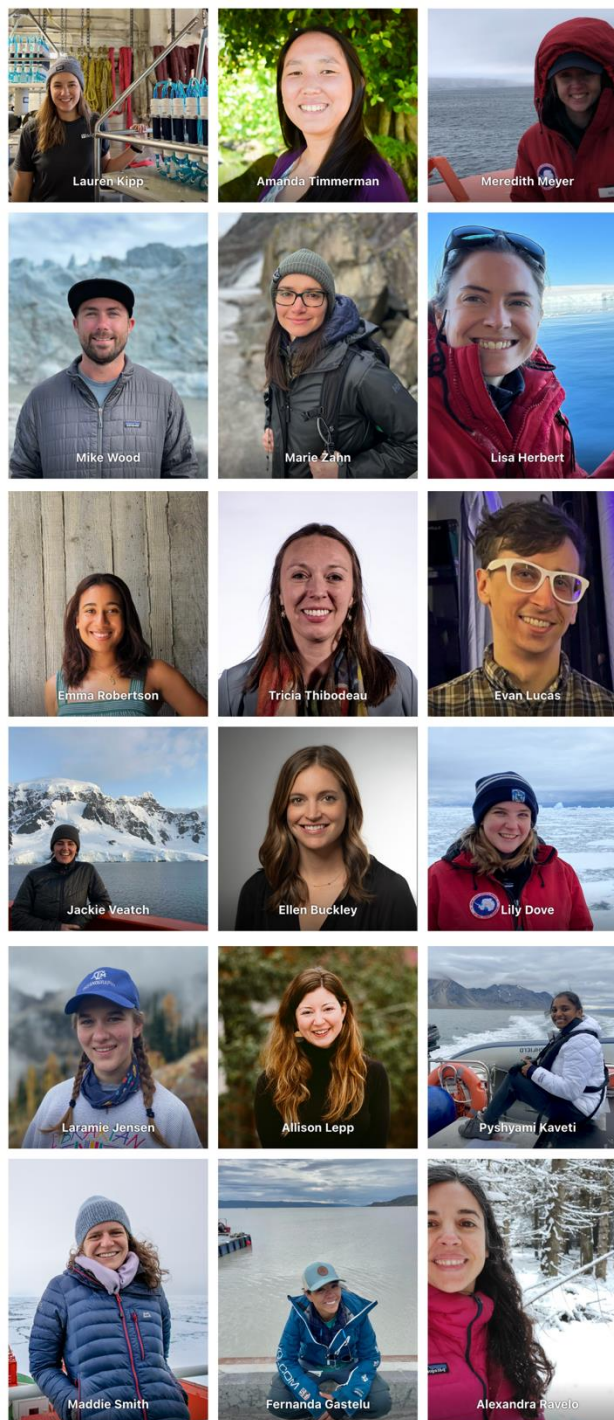
Advertised through multiple channels

Application period late Jan-mid Feb

67 Applicants from 47 universities and institutions (1-2 applicants from most, 8 from UW and 4 from UAF)

Scored based on:

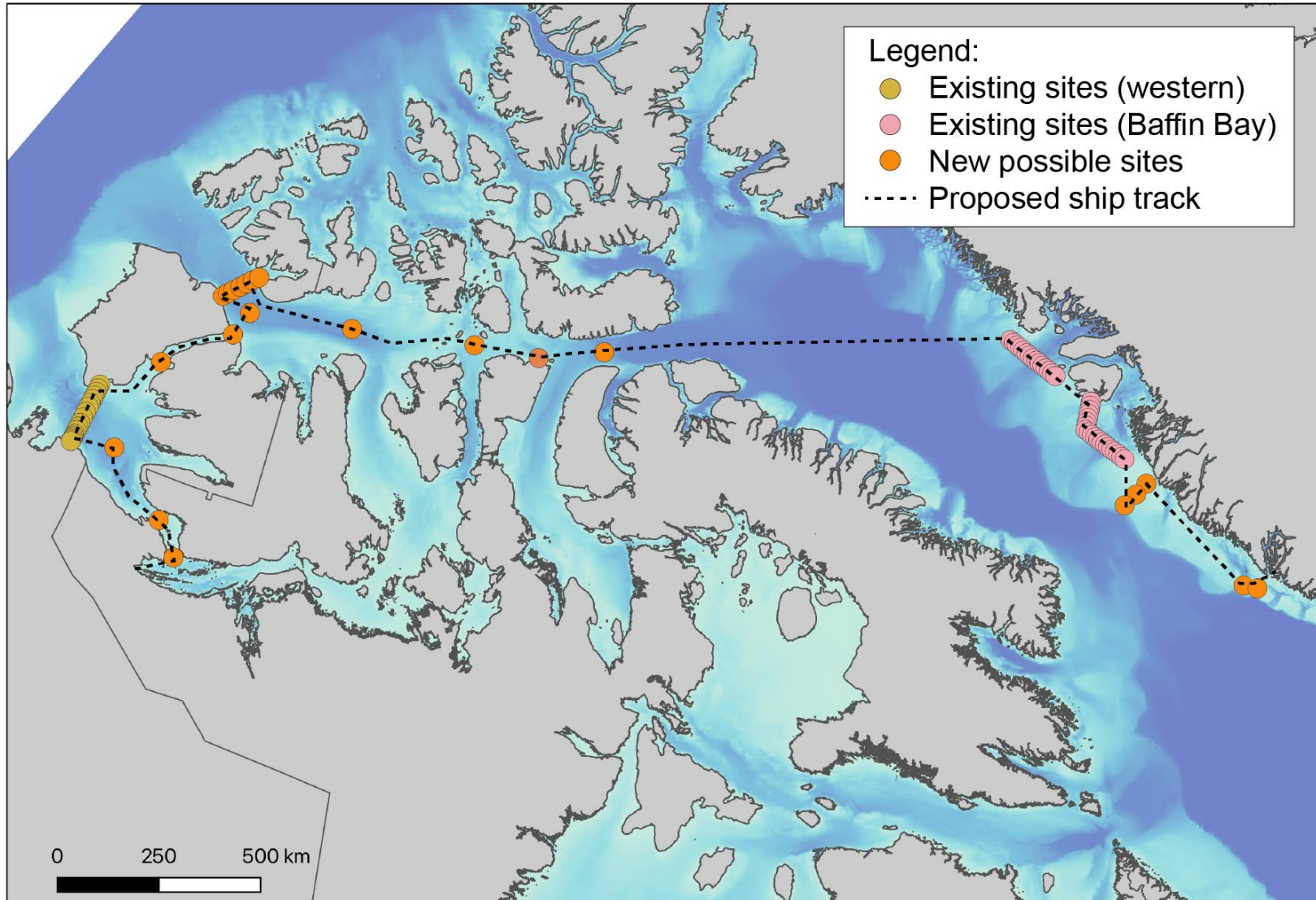
- Previous sea experience
- Grant eligibility/likelihood of applying
- Vested polar research interest
- Tractable science goals/interests
- Strong interest in professional development (leadership training opportunity)



20 applicants selected from 16 universities and NOAA

Range of geographical interests

Range of research interests, including marine chemistry, physical oceanography, biogeochemistry and ecology – as well as machine learning, robotics, remote sensing



Northwest Passage Cruise Plan (early version)

Required extensive Canadian and Greenlandic permit applications and translations

Coordinated with several Canadian agencies; structure of cruise limited involvement but we appreciated the opportunity to meet

Preliminary trip to Kugluktuk in June

Flight charter presented some challenges

Edmonton Workshop, July 30-31



Numerous guest speakers (Lisa Rom, Kayla Hubbard, Karla Heidelberg, LCDR Jamie Greendyk, LCDR Brian Williams, Gay Sheffield, Kaan Cav, Jeff Obelcz, plus many more virtual)

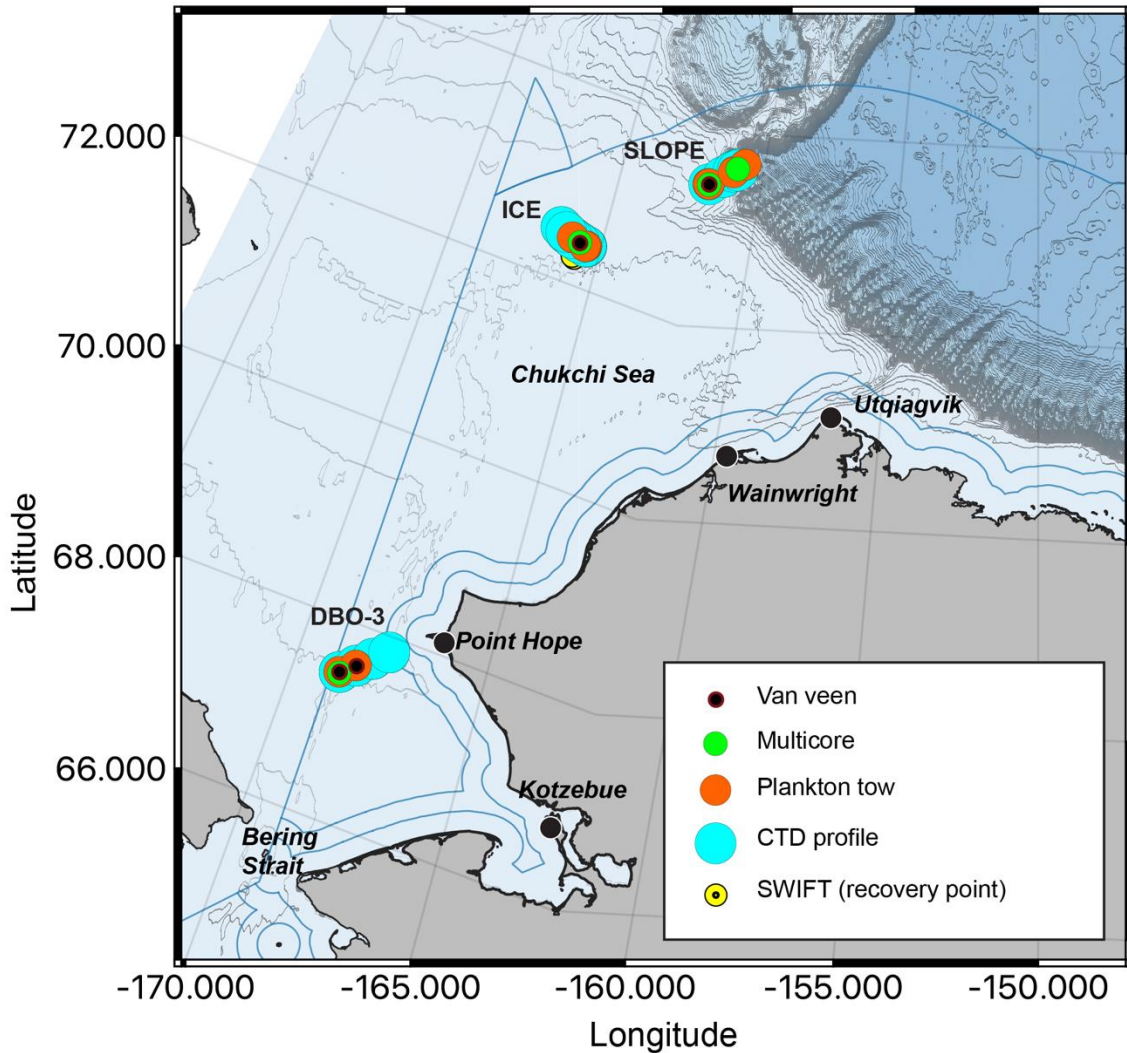
Opportunities for participants to introduce their scientific research interests and network informally

Formal training about requesting ship time, developing a cruise plan, managing interpersonal dynamics at sea, interfacing with communities

Kugluktuk BBQ, Aug 2



Chukchi Cruise, Oct 25 – Nov 3



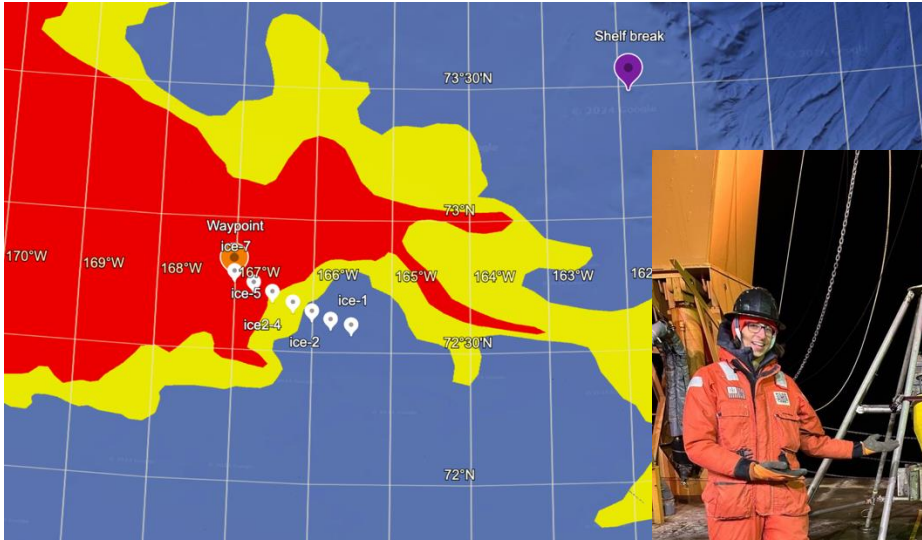
Role	Name	Institution
Co-chief	Emily Eidam	Oregon State
Co-chief	Laurie Juranek	Oregon State
Community observer	Clarissa Zeller	UIC Science
ECS participant	Lily Dove	Brown
ECS participant	Fernanda Gastelu	Virginia Tech
ECS participant	Pushyami Kaveti	Northeastern
ECS participant	Evan Lucas	Michigan tech
ECS participant	Alexandra Ravelo	UAF
ECS participant	Maddie Smith	WHOI
ECS participant	Jackie Veatch	Rutgers
ECS participant	Mike Wood	Moss Landing
Guest scientist	Shannon Doherty	UAF
Guest scientist	Lucia Maldonado	UAF

Chukchi Cruise, Oct 25 – Nov 3

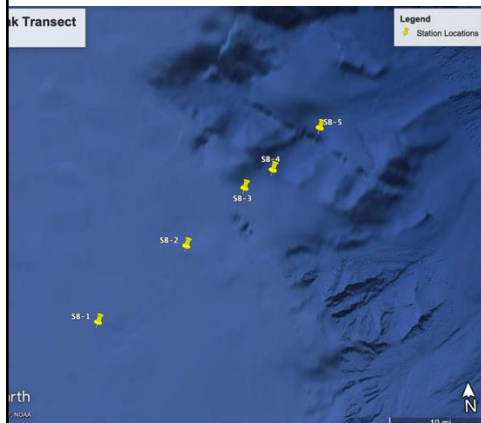
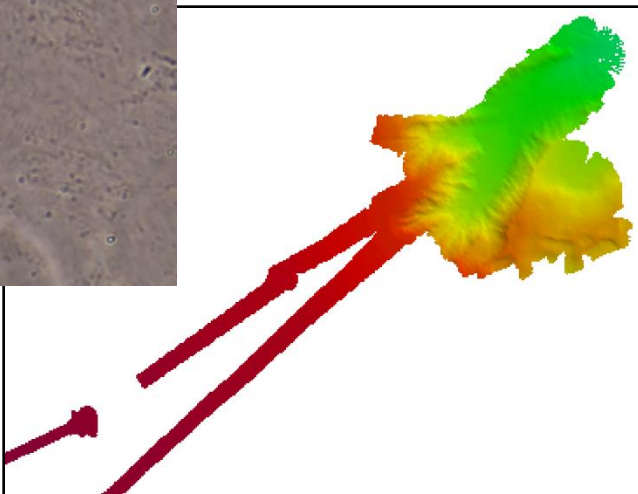
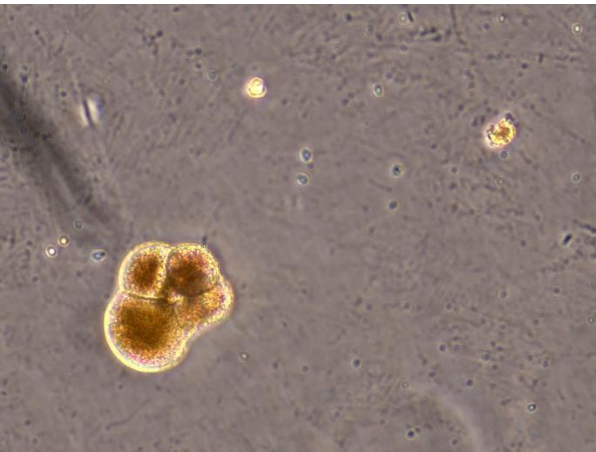
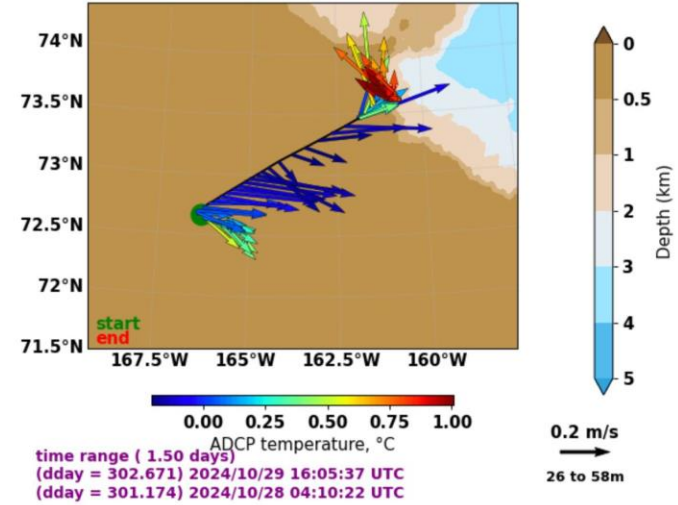
	Primary activity	Acting Chief Scientists
25 Oct	Mobilize (Nome)	
26 Oct	DBO-3 transect	Jackie Veatch & Lily Dove
27 Oct	ICE-edge transect; SWIFT deployments	Lily Dove & Maddie Smith
28 Oct	Shelf break transect	Maddie Smith & Fernanda Gastelu
29 Oct	Shelf break transect	Fernanda Gastelu & Mike Wood
30 Oct	SWIFT recoveries; small boat work	Mike Wood & Evan Lucas
31 Oct	ICE-edge transect revisited	Evan Lucas & Pushyami Kaveti
1 Nov	Transit; trainings	Pushyami Kaveti & Alex Ravelo
2 Nov	Transit; trainings	Alex Ravelo & Jackie Veatch
3 Nov	Demobilize (Nome)	



Chukchi Cruise, Oct 25 – Nov 3



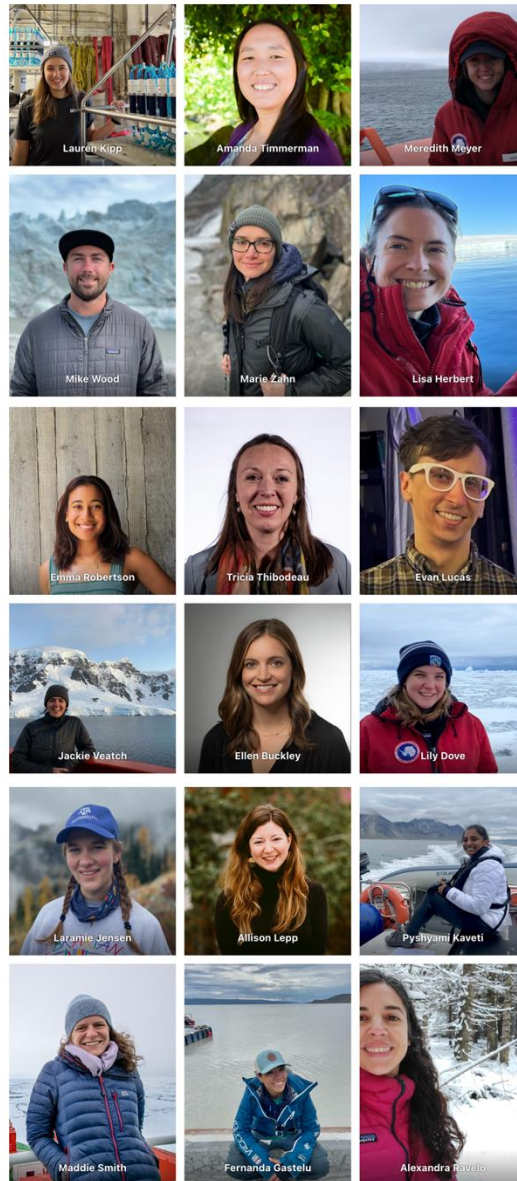
cruise=HLY2403, sonar=os150nb



Chukchi Cruise, Oct 25 – Nov 3



Future training efforts?



Paper in review at Oceanography

manuscript submitted to *Oceanography*

Training leaders for seagoing polar oceanography

Laurie Juranek¹, Emily Eidam¹

¹College of Earth, Ocean, and Atmospheric Sciences, Oregon State University, Corvallis

