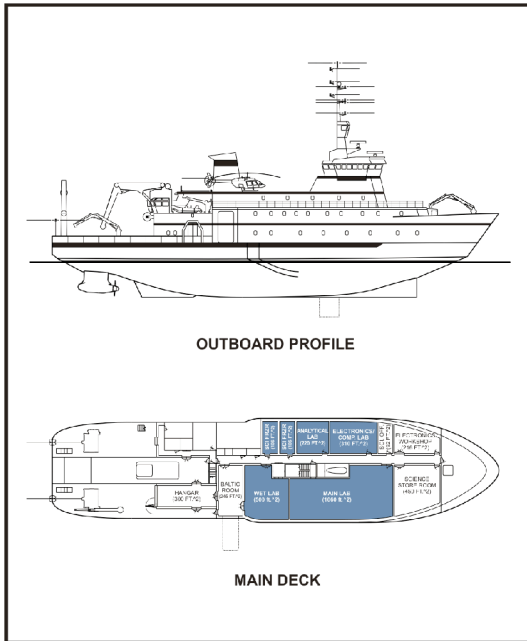


ALASKA REGION RESEARCH VESSEL

CONCEPT DESIGN



VESSEL CHARACTERISTICS

Length, Overall	226'-0"
Length, Design Waterline.....	200'-0"
Beam, Maximum	52'-0"
Beam, Amidships	48'-0"
Depth, Amidships	29'-0"
Draft, Design Waterline	18'-0"
Displacement	2,800 LTSW

Lab Area, Total	2,100 ft. ²
Covered Working Deck	545 ft. ²
Exterior Working Deck	3,500 ft. ²

Propulsion Power	5,750 HP
Endurance	45 Days

ICE TRANSITING CAPABILITY

Ice Type.....	Winter, First-Year Ice, 72.5 ksi
Level Ice Thickness	2.2 ft. - 2.5 ft.
Ridge Height/Depth.....	7 ft./20 ft.

SCIENCE EQUIPMENT

CTD Winch	
Capacity	6,000 lbs.
Cable, 0.322 in. EM	33,000 ft.

Hydro Winch	
Capacity	6,000 lbs.
Cable, 3x19 hydrowire	33,000 ft.

Deep Water Traction Winch	
Capacity	10,000/25,000 lbs.
Cable, 0.680 in. coax	26,500 ft.
Cable, 9/16 in. towing	33,000 ft.

Over-side Handling Equipment	
Stern A-Frame	20,000 lbs.
Side A-Frame	12,000 lbs.
Baltic Room Extension Crane	12,000 lbs.
Knuckle boom crane.....	20,000 lbs.
Aft deck crane, small	2,000 lbs.
Fore-deck crane	2,000 lbs.

FISHERIES EQUIPMENT

Suitable for catch weight to 25,000 lbs.
Capable of towing to a depth of 3,300 ft.

Full Suite of Trawl Winches (Removable)	
Trawl Winches	2x13,000 ft. of 1.13 in. WR
Net Reel.....	350 ft. ³ Net Capacity
Gilson, Outhaul, Net Sonde Winches	

Aft Deck Arranged for Fisheries	
Stern Ramp	13 ft. wide, 37 degree slope
Trawlway	13 ft. wide, 47 ft. long

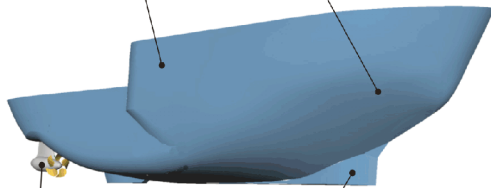
HULL PERFORMANCE FEATURES

REAMERS

- Improve turning in ice
- Break wider channel
- Reduce midship friction
- Enable the use of vertical sides midship

BOW FORM

- Compromise between ice and open water performance
- Relatively shallow buttocks (slope)



AZIMUTHING PROPULSORS

- Superior maneuverability and control
- Extend operability in ice significantly
- Enable breaking/clearing with prop wash
- Enhances available thrust

ICE WEDGE

- Prevents beaching and loss of stability in ice
- Splits thick ice
- Guides ice away from vessel bottom and propulsors
- Provides location for bow

DESIGN OVERSIGHT COMMITTEE

VERA ALEXANDER, UAF, CHAIR
ROBERT ELSNER, UAF
TERRY WHITLEGDE, UAF
THOMAS WEINGARTNER, UAF
TOM SMITH, UAF
RICHARD PITTENGER, WHOI
ROBERTSON DINSMORE, WHOI
JOE COBURN, WHOI

PROJECT TIMELINE

	2000	2001	2002	2003	2004	2005
CONCEPT DESIGN	█	█	█			
PRLIMINARY DESIGN			█	█		
MODEL TESTING				█		
CONTRACT DESIGN					█	█
CONSTRUCTION						█

