

STO - CMRE



Ian Sage
Director, Marine Operations



Busy year

- Throughout 2015 negotiations conducted with Italian MoD and NATO on future ship operating model.
- 22 December 2015, MOU signed between NATO and ITA MoD.
- Future model is Italian Navy Flag (auxiliary) and Italian Navy crew for both ships.
- NATO CMRE assumes custody and pays all costs except for crewing. Technical support provided under global technical support contract.
- 31 December, German Flag lowered in ALLIANCE. Vessel registry transferred to Italy.
- 1 Jan 2016, transition period commenced.

So what did we do?

- Major docking
- Reclassification ABS to Rina
- Increase crew and accommodation from 25 to 44. Scientific team remains 25 persons.
- Replace Bow Thruster (Improve Cjoy ability)
- Rebuild accommodation
- Increase all hotel systems
- Install EM 302 and gondola mount

And more

- New Doppler logs
- Through hull CTD
- New winch controllers and overhaul
- New networks and military communications

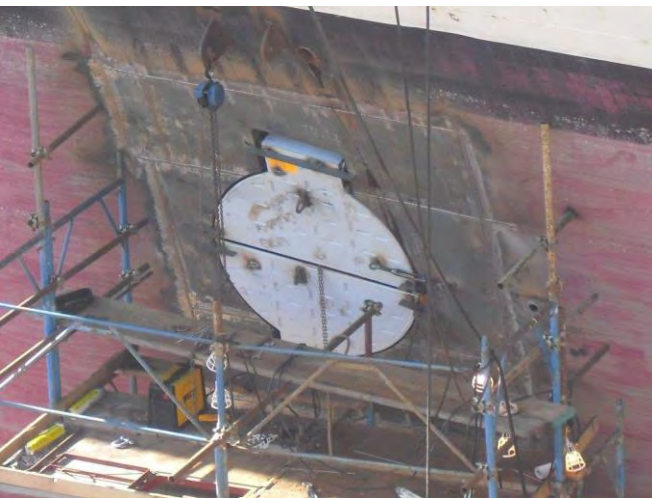
Timeline

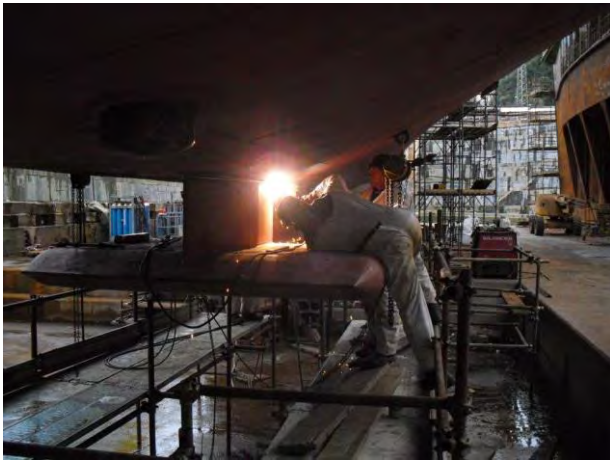
- 22 December 2015 – MOU signed
- 8 January 2016 – finance approved
- 18 January – ALLIANCE enters dock
- 17 March – ALLIANCE afloat
- 18 – 24 March – Harbour trials
- 29 March – 8 April – Sea trials
- 9 April – Formal flagging ceremony
- April – May – crew training
- 30 May – operational for science

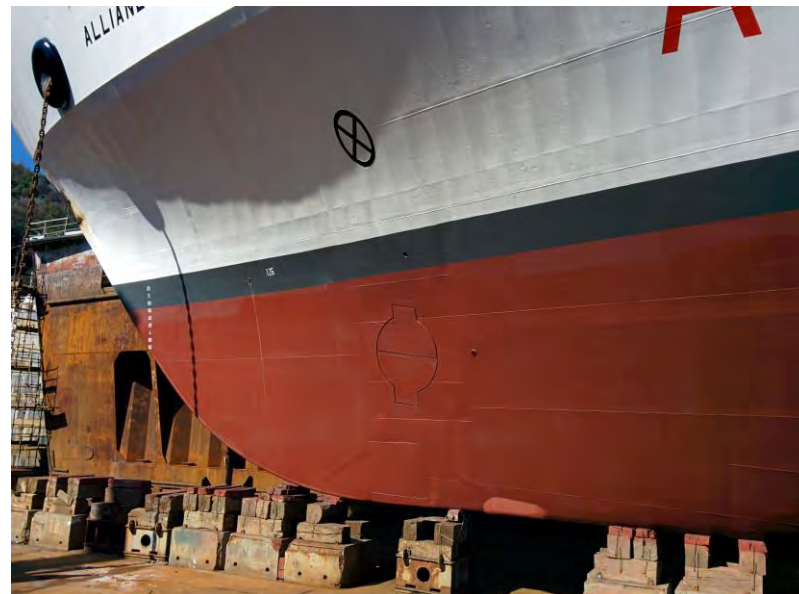
Midlife upgrade in a normal docking













It really works.....

