

# **APPENDIX III**

## **Captain Johnson's HEALY Slides**

Photocopies of the slides illustrating construction of the HEALY are at the UNOLS office.

### **Status of the "Top Ten"**

Shipbuilder Accepted Responsibility for Delay in Launch and Delivery

As Consideration, We Negotiated a Contract Change to Accomplish Much of Our "Top Ten"

The Following Have Been Incorporated Into the Contract and will be Accomplished Prior to Delivery

- Increase area and bench space in labs
- Improve traffic flow
- Reduce science freezer
- Relocate dive locker
- Fantail wet lab
- Choices for vans
- Stowage for on-ice equipment
- Area for incubations
- Portable lab refrigerators and freezers

Will Test Lab Temperature Controls and Sea Water Temperature Monitor and Controls on Trials

Data Archiving is a Procedural Issue which can be resolved by Discussion with Coast Guard Representatives

Bridge Wings Designed and will be sent to Panama Canal for Approval

### **Schedule**

- Start Construction March 1996
- Keel Laying September 1996
- Launch November 1997
- Crew, Phase 1 & 2 May/June 1998
- Delivery December 1998
- End Navy Responsibility/Funding January 2000

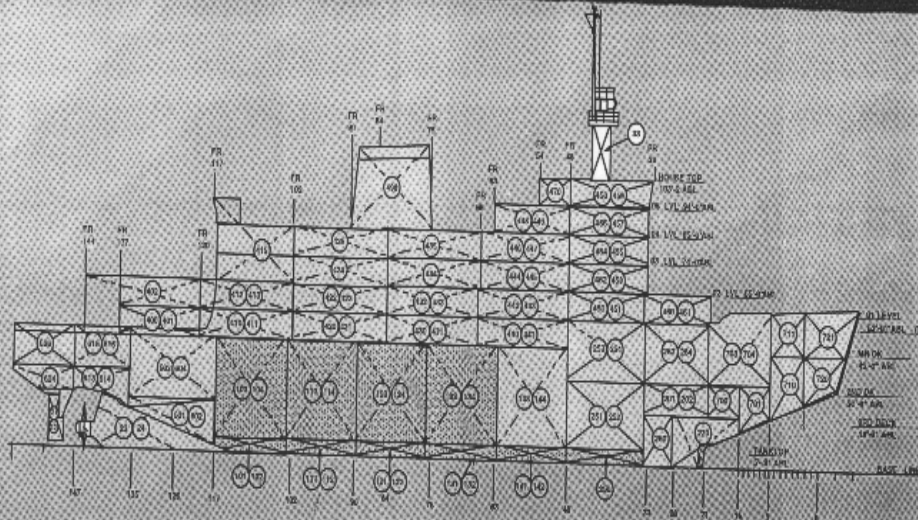
# POLAR ICEBREAKER USCGC HEALY (WAGB-20)



April 1997 AICC Brief

# POLAR ICEBREAKER (WAGB-20)

## Construction Status as of 17 Apr 97



PROFILE

Additional Erected Units:  
 (10) (11) (12) (13) (14) (15) (16) (17) (18) (19) (20) (21) (22) (23) (24) (25) (26) (27) (28) (29) (30) (31) (32) (33) (34) (35) (36) (37) (38) (39) (40) (41) (42) (43) (44) (45) (46) (47) (48) (49) (50) (51) (52) (53) (54) (55) (56) (57) (58) (59) (60) (61) (62) (63) (64) (65) (66) (67) (68) (69) (70) (71) (72) (73) (74) (75) (76) (77) (78) (79) (80) (81) (82) (83) (84) (85) (86) (87) (88) (89) (90) (91) (92) (93) (94) (95) (96) (97) (98) (99) (100) (101) (102) (103) (104) (105) (106) (107) (108) (109) (110) (111) (112) (113) (114) (115) (116) (117) (118) (119) (120) (121) (122) (123) (124) (125) (126) (127) (128) (129) (130) (131) (132) (133) (134) (135) (136) (137) (138) (139) (140) (141) (142) (143) (144) (145) (146) (147) (148) (149) (150) (151) (152) (153) (154) (155) (156) (157) (158) (159) (160) (161) (162) (163) (164) (165) (166) (167) (168) (169) (170) (171) (172) (173) (174) (175) (176) (177) (178) (179) (180) (181) (182) (183) (184) (185) (186) (187) (188) (189) (190) (191) (192) (193) (194) (195) (196) (197) (198) (199) (200)

TOTAL UNITS: 134 ○  
 TOTAL IN PRODUCTION: 132 ○  
 TOTAL ERECTED: 39 ○

